

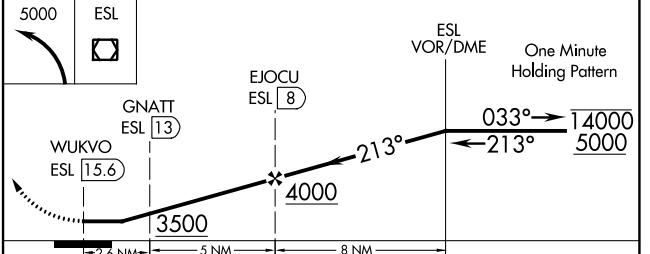
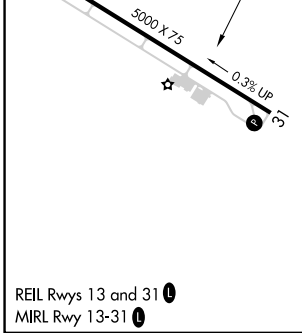
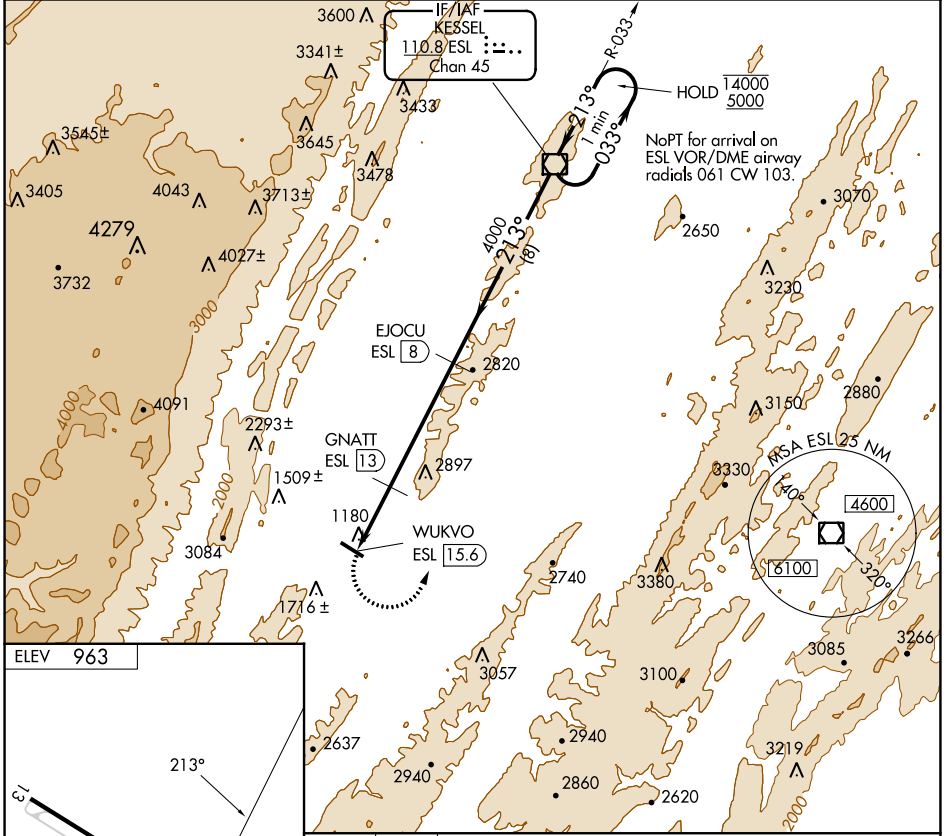
VOR/DME ESL 110.8 Chan 45	APP CRS 213°	Rwy Idg TDZE Apt Elev N/A N/A 963
---	------------------------	---

VOR/DME-A

GRANT COUNTY (W99)

MISSSED APPROACH: Climbing left turn to 5000 direct ESL VOR/DME and hold.

AWOS-3 124.475	WASHINGTON CENTER 133.55 322.55	UNICOM 122.8 (CTAF)
--------------------------	---	-------------------------------



CATEGORY	A	B	C	D
CIRCLING	3100-1¼ 2137 (2200-1¼)	3100-1½ 2137 (2200-1½)	NA	

NE-4, 13 JUN 2024 to 11 JUL 2024

NE-4, 13 JUN 2024 to 11 JUL 2024