

APP CRS	Rwy Idg	<b>5501</b>
<b>189°</b>	TDZE	<b>1016</b>
	Apt Elev	<b>1016</b>

# RNAV (GPS) RWY 19

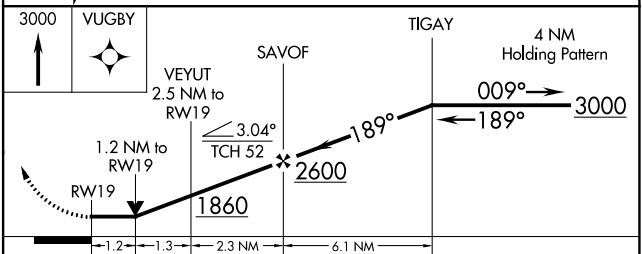
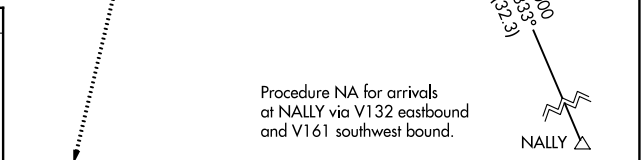
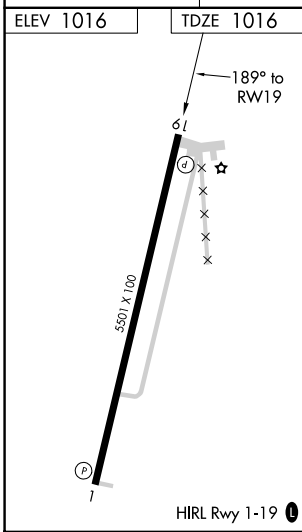
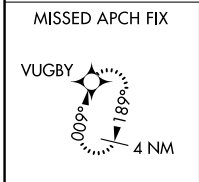
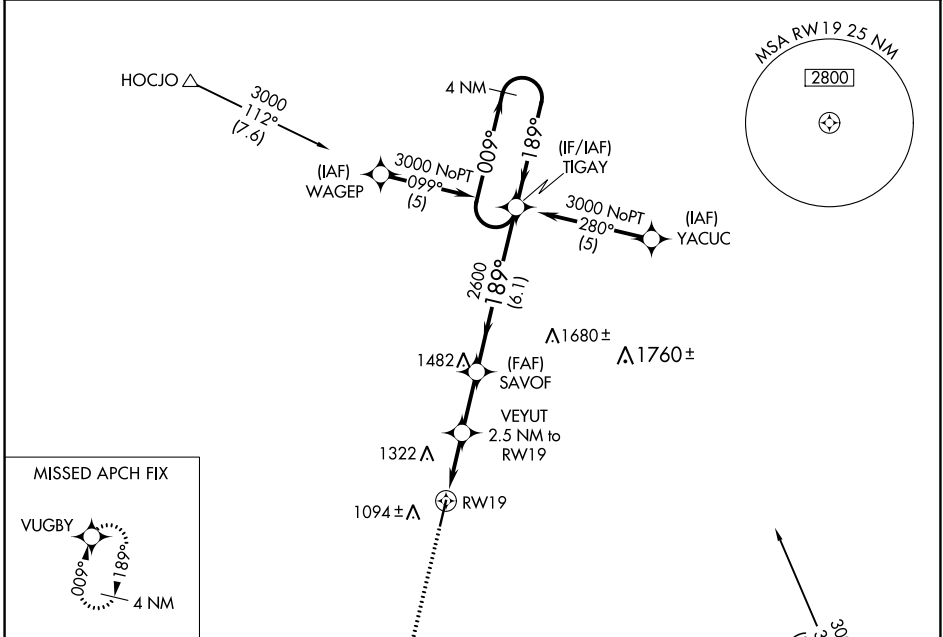
ALLEN COUNTY (K88)

RNP APCH

▼ Rwy 19 helicopter visibility reduction below 3/4 SM NA. When local altimeter setting not received, use Chanute altimeter setting and increase all MDAs 40 feet and visibility Circling Cat C 1/4 SM. VDP NA when using Chanute altimeter setting.

MISSED APPROACH:  
Climb to 3000 direct  
VUGBY and hold.

AWOS-3 <b>128.325</b>	KANSAS CITY CENTER <b>127.725 270.25</b>	UNICOM <b>122.8 (CTAF) 0</b>
--------------------------	---	---------------------------------



CATEGORY	A	B	C	D
LNAV MDA	1460-1	444 (500-1)	1460-1 3/8 444 (500-1 3/8)	NA
CIRCLING	1520-1	504 (600-1)	1660-1 3/4 644 (700-1 3/4)	NA

NC-2, 13 JUN 2024 to 11 JUL 2024

NC-2, 13 JUN 2024 to 11 JUL 2024