

APP CRS	Rwy ldg	<b>3200</b>
<b>255°</b>	TDZE	<b>464</b>
	Apt Elev	<b>464</b>

# RNAV (GPS) RWY 26

ORANGE COUNTY (OMH)

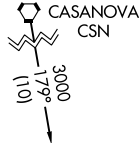
RNP APCH - GPS.

**▼** When local altimeter setting not received, use Charlottesville altimeter setting and increase all MDA 80 feet. Rwy 26 helicopter visibility reduction below 1 SM NA. Procedure NA at night.

**MISSED APPROACH:**  
Climb to 3100 direct ZAVRO and hold.

<b>AWOS-3</b> <b>118.075</b>	<b>POTOMAC APP CON</b> <b>132.85 323.125</b>	<b>UNICOM</b> <b>122.8 (CTAF) 0</b>
---------------------------------	---	--

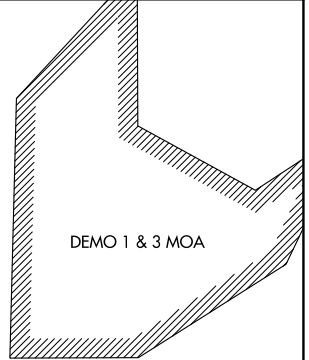
Procedure NA for arrivals on CSN VORTAC airway radials 148 CW 239.



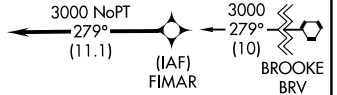
(IAF) DAGME



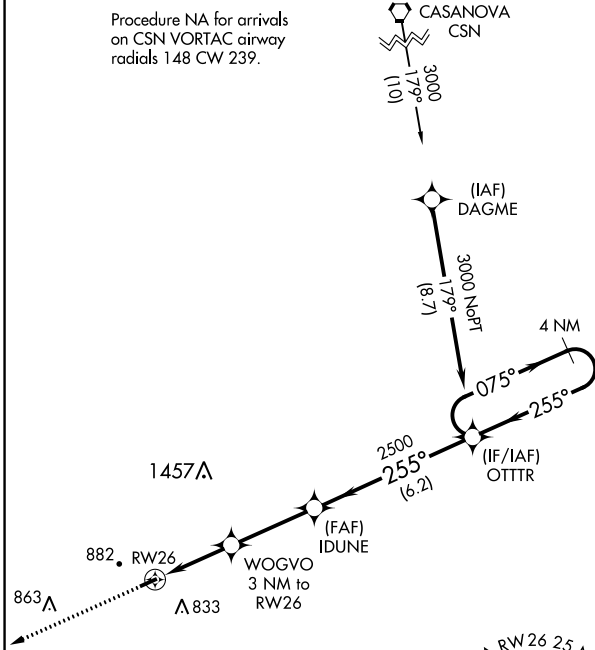
4 NM



DEMO 1 & 3 MOA



Procedure NA for arrivals on BRV VORTAC airway radials 214 CW 309.



1457A

2500 (6.2)

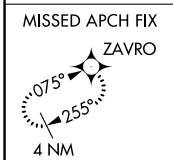
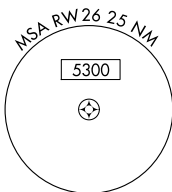
882 RW26

WOGVO 3 NM to RW26

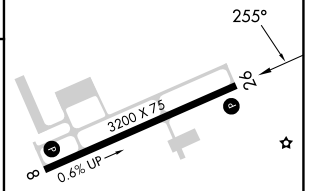
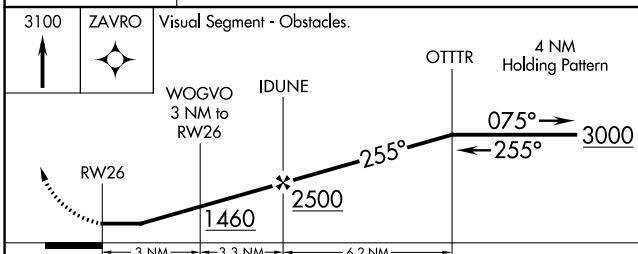
(FAF) IDUNE

863A

A 833



ELEV 464	TDZE 464
----------	----------



CATEGORY	A	B	C	D
LNAV MDA	980-1	516 (600-1)		NA
<b>CIRCLING</b>	1300-1¼	836 (900-1¼)		NA

MIRL Rwy 8-26 0  
REIL Rwy 8 and 26 0

NE-3, 13 JUN 2024 to 11 JUL 2024

NE-3, 13 JUN 2024 to 11 JUL 2024