

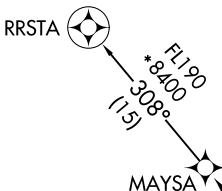
(MAYSA7.MAYSA) 20142

# MAYSA SEVEN DEPARTURE (RNAV)

AL-6648 (FAA)

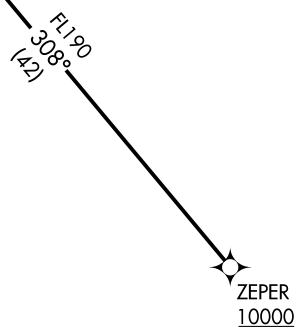
PHOENIX GOODYEAR (GYR)

GOODYEAR, ARIZONA



**TOP ALTITUDE:  
ASSIGNED BY ATC**

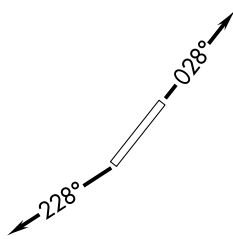
ATIS  
 118.35  
 GND CON  
 121.7  
 GOODYEAR TOWER\*  
 120.1 239.3  
 LUKE DEP CON\*  
 125.45 263.125  
 PHOENIX DEP CON  
 120.7 239.0



- NOTE: RNAV 1.
- NOTE: Turbojets and turboprops only.
- NOTE: RADAR required.
- NOTE: GPS required.
- NOTE: Aircraft departing KGEU and KGYR ATC assigned only. Do not file.

### TAKEOFF MINIMUMS

Rwys 3, 21: Standard.



NOTE: Chart not to scale.



### DEPARTURE ROUTE DESCRIPTION

TAKEOFF RUNWAY 3: Climb on heading 028° or as assigned by ATC, thence. . . .

TAKEOFF RUNWAY 21: Climb on heading 228° or as assigned by ATC, thence. . . .

. . . .expect RADAR vectors to cross ZEPER at or above 10000, then on track 308° to MAYSA, then on RRSTA TRANSITION. Maintain ATC assigned altitude, expect filed altitude 3 minutes after departure.

RRSTA TRANSITION (MAYSA7.RRSTA)

# MAYSA SEVEN DEPARTURE (RNAV)

(MAYSA7.MAYSA) 21MAY20

GOODYEAR, ARIZONA  
PHOENIX GOODYEAR (GYR)

SW-4, 13 JUN 2024 to 11 JUL 2024

SW-4, 13 JUN 2024 to 11 JUL 2024