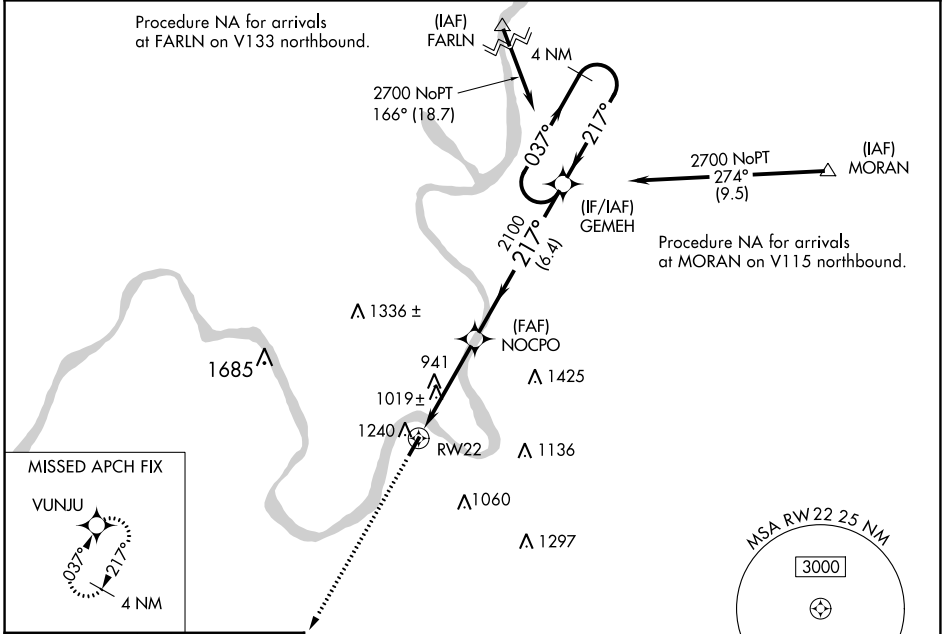


WAAS CH <b>61323</b> <b>W22A</b>	APP CRS <b>217°</b>	Rwy Idg TDZE <b>758</b> Apt Elev <b>758</b>	<b>4000</b>
--	------------------------	---	-------------

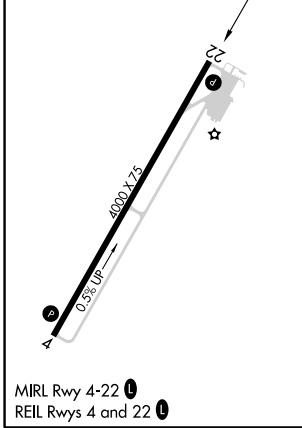
# RNAV (GPS) RWY 22

JACKSON COUNTY (I18)

RNP APCH.		MISSED APPROACH: Climb to 2600 direct VUNJU and hold.	
<p>When local altimeter setting not received, use Point Pleasant altimeter setting and increase all MDA 60 feet; increase LP and LNAV Cat C visibility ¼ mile. Circling Rwy 4 NA at night. Rwy 22 helicopter visibility reduction below ¾ SM NA.</p>			
AWOS-2 <b>121.3</b>	HUNTINGTON APP CON <b>128.4 270.1</b>	UNICOM <b>122.8 (CTAF) 0</b>	



ELEV 758	TDZE 758
----------	----------



2600	VUNJU	VGSI and descent angles not coincident (VGSI Angle 4.00/TCH 50).		4 NM Holding Pattern
<p>037° 2700</p> <p>217°</p> <p>NOCPO</p> <p>2100</p> <p>3.00° TCH 40</p> <p>RW22</p> <p>4.1 NM 6.4 NM</p>				
CATEGORY	A	B	C	D
LP MDA	1280-1	522 (600-1)	1280-1½ 522 (600-1½)	NA
LNAV MDA	1540-1 782 (800-1)	1540-1¼ 782 (800-1¼)	1540-2½ 782 (800-2½)	NA
CIRCLING	1600-1¼	842 (900-1¼)	1600-2½ 842 (900-2½)	NA

NE-4, 13 JUN 2024 to 11 JUL 2024

NE-4, 13 JUN 2024 to 11 JUL 2024