

APP CRS 051°	Rwy Idg 2500
	TDZE 1209
	Apt Elev 1209

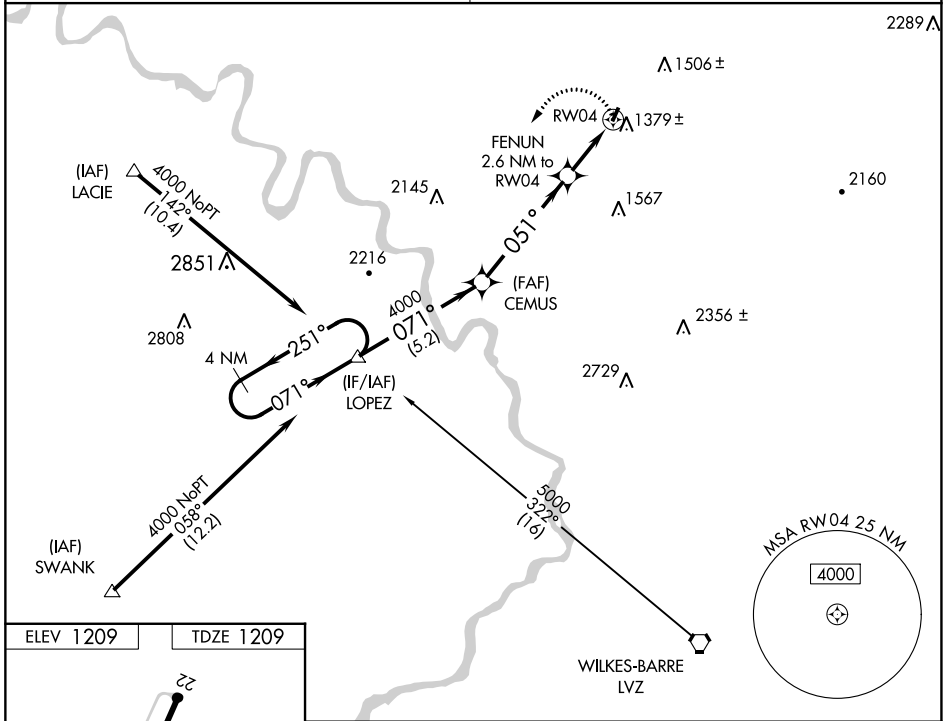
RNAV (GPS) RWY 4

SEAMANS FLD (9N3)

▼ DME/DME RNP-0.3 NA.
▲ NA Obtain local altimeter setting on CTAF; when not received, use Wilkes-Barre/Scranton Intl altimeter setting.
 VDP NA when using Wilkes-Barre/Scranton Intl altimeter setting.

MISSED APPROACH: Climbing left turn to 4000 direct LOPEZ and hold.

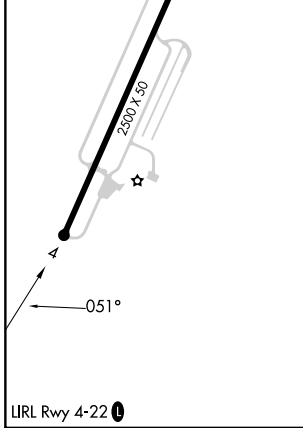
WILKES-BARRE APP CON 120.95 256.7	UNICOM 122.7 (CTAF) 0
---	---------------------------------



NE-4, 13 JUN 2024 to 11 JUL 2024

NE-4, 13 JUN 2024 to 11 JUL 2024

ELEV 1209	TDZE 1209
-----------	-----------



4 NM Holding Pattern	LOPEZ	CEMUS	4000	LOPEZ
4000	← 251° 071° →	4000	051°	FENUN 2.6 NM to RWY04 1.1 NM to RWY04
		3.49° TCH 40	2180	RWY04
	5.2 NM	4.9 NM	1.5 NM	1.1 NM
CATEGORY	A	B	C	D
LNAV MDA	1640-1	431 (500-1)		NA
CIRCLING	1720-1 511 (600-1)	1780-1 571 (600-1)		NA
WILKES-BARRE/SCRANTON INTL ALTIMETER SETTING MINIMUMS				
LNAV MDA	1720-1	511 (600-1)		NA
CIRCLING	1800-1 591 (600-1)	1860-1 651 (700-1)		NA