

APP CRS <b>290°</b>	Rwy Idg TDZE Apt Elev	<b>N/A</b> <b>N/A</b> <b>2537</b>
------------------------	-----------------------------	---

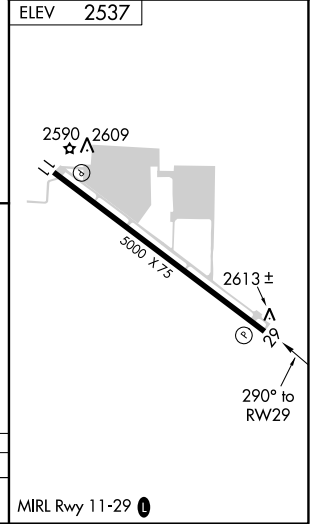
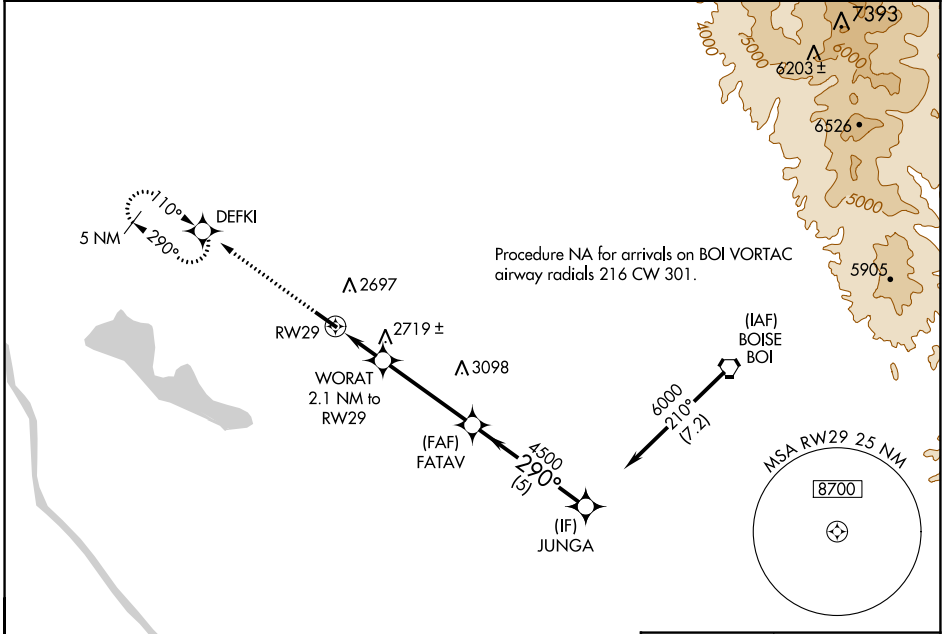
# RNAV (GPS)-B

NAMPA MUNI (MAN)

**⚠** Night landing: Rwy 29, operational VGSI required, remain on or above VGSI glidepath until threshold. DME/DME RNP -0.3 NA. When local altimeter setting not received, use Caldwell Industrial altimeter setting and increase all MDA 40 feet and visibility Cat C ¼ SM. Helicopter visibility reduction below 1 SM NA.

**MISSED APPROACH:** Climb to 4200 direct DEFKI and hold.

AWOS-3 <b>118.325</b>	BIG SKY APP CON <b>119.6 269.4</b>	UNICOM <b>122.7 (CTAF) 0</b>
--------------------------	---------------------------------------	---------------------------------



4200	DEFKI	VGSI and descent angles not coincident (VGSI Angle 3.62/TCH 49).	JUNGA
			6000
			4500
			3240
			3060-1
			523 (600-1)
			3100-1½
			563 (600-1½)
			3220-2¼
			683 (700-2¼)

CATEGORY	A	B	C	D
<b>C</b> CIRCLING	3060-1	523 (600-1)	3100-1½ 563 (600-1½)	3220-2¼ 683 (700-2¼)

MIRL Rwy 11-29 0

NW-1, 13 JUN 2024 to 11 JUL 2024

NW-1, 13 JUN 2024 to 11 JUL 2024