

APP CRS	Rwy Idg	<b>3301</b>
<b>240°</b>	TDZE	<b>1213</b>
	Apt Elev	<b>1215</b>

# RNAV (GPS) RWY 24

MARSHALL COUNTY (MPG)

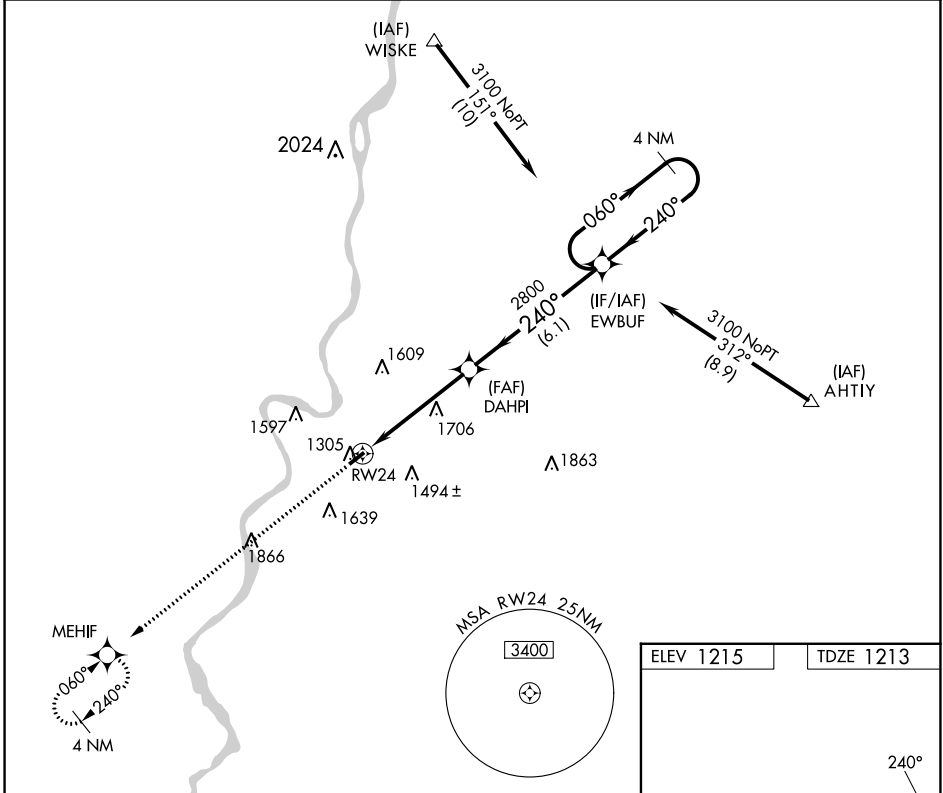
RNP APCH.

**▼** When local altimeter setting not received, use Wheeling altimeter setting and increase all MDA 60 feet. Rwy 24 helicopter visibility reduction below 3/4 SM NA.

**▲ NA**

MISSED APPROACH: Climb to 3000 direct MEHIF and hold.

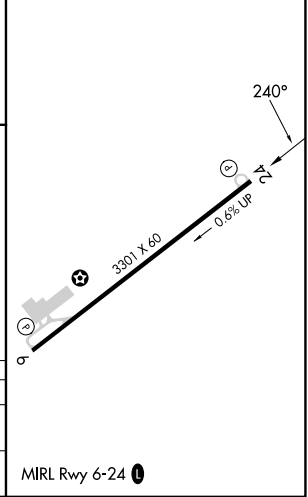
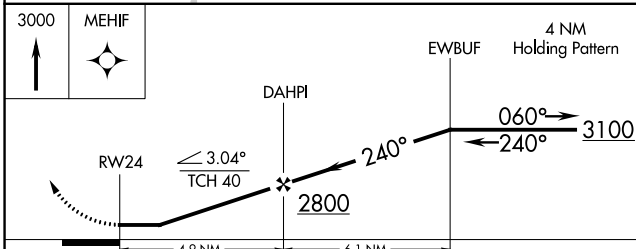
AWOS-3 <b>119.05</b>	CLEVELAND CENTER <b>126.95 239.30</b>	UNICOM <b>122.7 (CTAF) 0</b>
-------------------------	--	---------------------------------



NE-4, 13 JUN 2024 to 11 JUL 2024

NE-4, 13 JUN 2024 to 11 JUL 2024

ELEV 1215	TDZE 1213
-----------	-----------



CATEGORY	A	B	C	D
LNVA MDA	1960-1 747 (800-1)	1960-1¼ 747 (800-1¼)	1960-2¼ 747 (800-2¼)	NA
CIRCLING	1960-1 745 (800-1)	1960-1¼ 745 (800-1¼)	1960-2¼ 745 (800-2¼)	NA

MIRL Rwy 6-24 0