

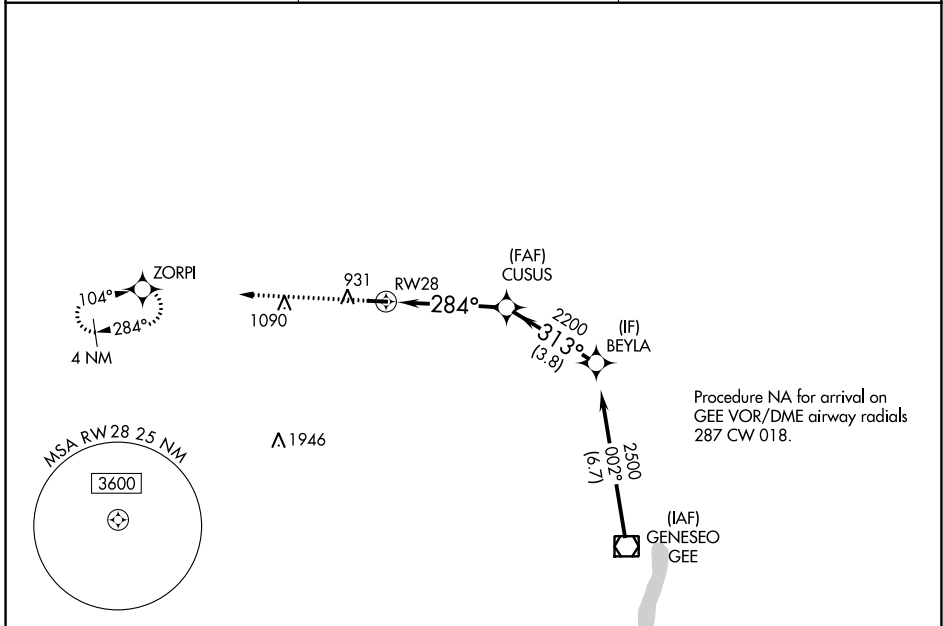
WAAS CH <b>69330</b> <b>W28A</b>	APP CRS <b>284°</b>	Rwy Idg TDZE <b>778</b> Apt Elev <b>780</b>	<b>3854</b> <b>778</b> <b>780</b>
--	------------------------	---	---

# RNAV (GPS) RWY 28

LE ROY (5G0)

RNP APCH.	MISSED APPROACH: Climb to 3000 direct ZORPI and hold.
<p>Procedure NA at night. Rwy 28 helicopter visibility reduction below 1 SM NA.</p> <p>NA Use Frederick Douglass/Greater Rochester Intl altimeter setting.</p>	

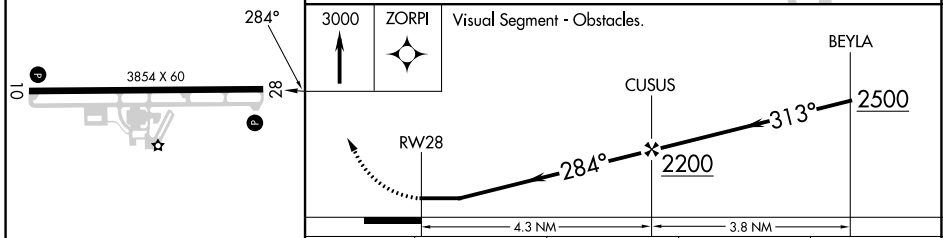
ROC ASOS <b>124.825</b>	ROCHESTER APP CON <b>123.7 322.3</b>	UNICOM <b>122.8</b> (CTAF) <b>1</b>
----------------------------	---	--



NE-2, 13 JUN 2024 to 11 JUL 2024

NE-2, 13 JUN 2024 to 11 JUL 2024

ELEV 780	TDZE 778
----------	----------



CATEGORY	A	B	C	D
LP MDA	1 240-1	462 (500-1)	NA	
RNAV MDA	1 240-1	462 (500-1)	NA	