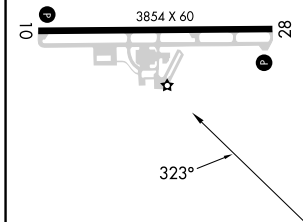
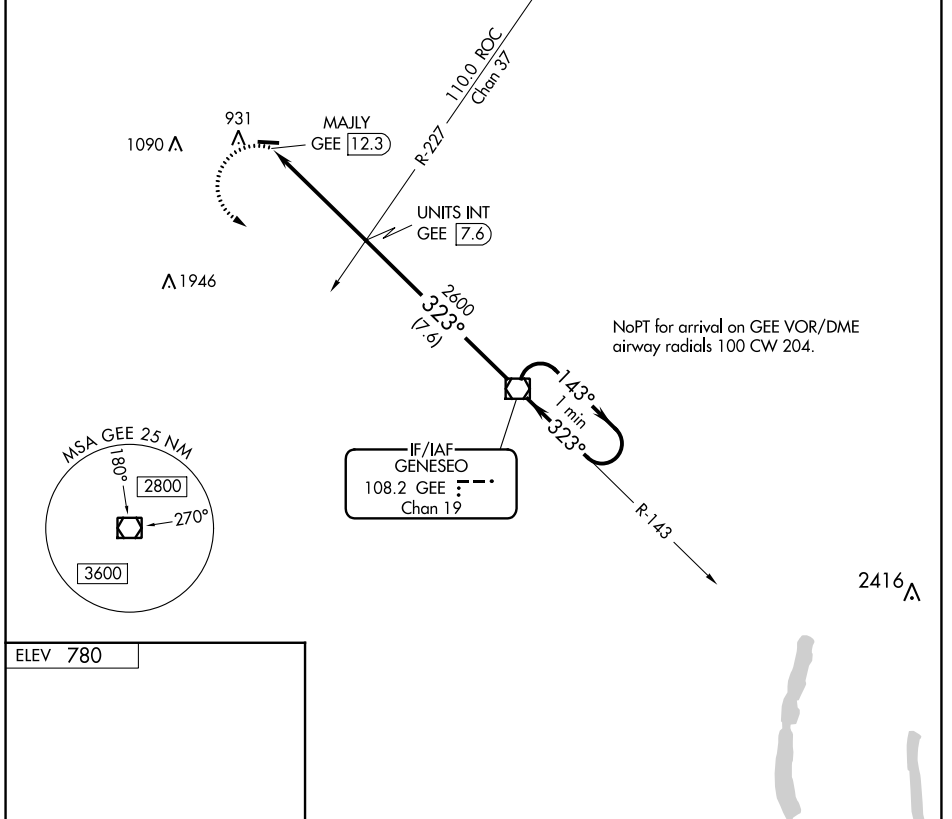


VOR/DME GEE 108.2 Chan 19	APP CRS 323°	Rwy Idg TDZE Apt Elev	N/A N/A 780
---	------------------------	-----------------------------	--

VOR-A
LE ROY (5G~~0~~)

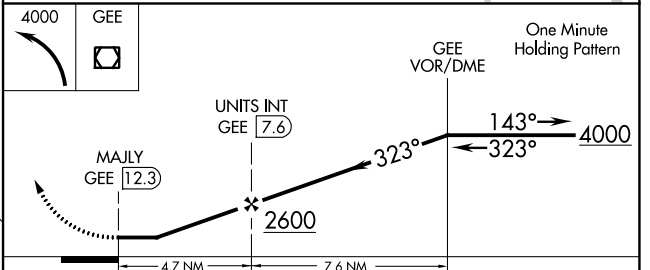
<p>⚠ NA Use Frederick Douglass/Greater Rochester Intl altimeter setting. Circling Rwy 10 NA at night. When Circling to Rwy 28 at night, operational VGSI required, remain on or above VGSI glidepath until threshold.</p>	<p>MISSED APPROACH: Climbing left turn to 4000 direct GEE VOR/DME and hold.</p>
--	--

ROC ASOS 124,825	ROCHESTER APP CON 123.7 322.3	UNICOM 122.8 (CTAF) 1
----------------------------	---	---------------------------------



MIRL Rwy 10-28 1
REIL Rwys 10 and 28 1

FAF to MAP 4.7 NM					
Knots	60	90	120	150	180
Min:Sec	4:42	3:08	2:21	1:53	1:34



CATEGORY	A	B	C	D
CIRCLING	1440-1	660 (700-1)	NA	

NE-2, 13 JUN 2024 to 11 JUL 2024

NE-2, 13 JUN 2024 to 11 JUL 2024