

WAAS CH <b>58219</b> <b>W10A</b>	APP CRS <b>103°</b>	Rwy Idg TDZE Apt Elev	<b>4000</b> <b>879</b> <b>881</b>
--	------------------------	-----------------------------	---

# RNAV (GPS) RWY 10

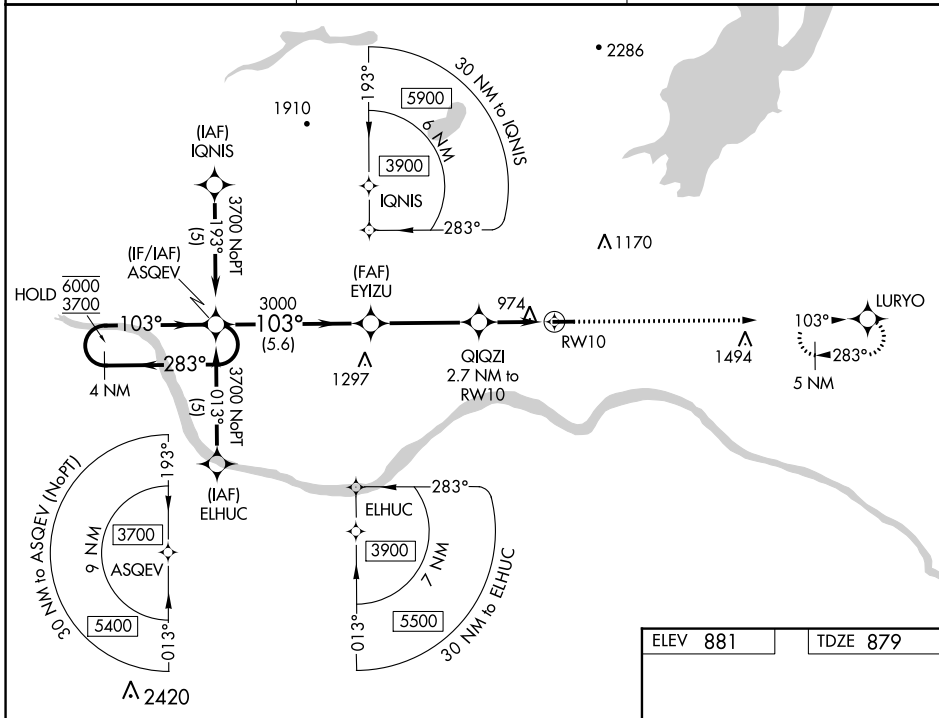
FULTON COUNTY (NY)

RNP APCH - GPS.

**⚠** Rwy 10 helicopter visibility reduction below 3/4 SM NA. For uncompensated Baro-VNAV systems, LNAV/VNAV NA below -16°C or above 54°C.

**MISSED APPROACH:** Climb to 5000 direct LURYO and hold, continue climb-in-hold to 5000.

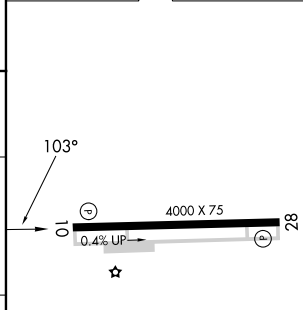
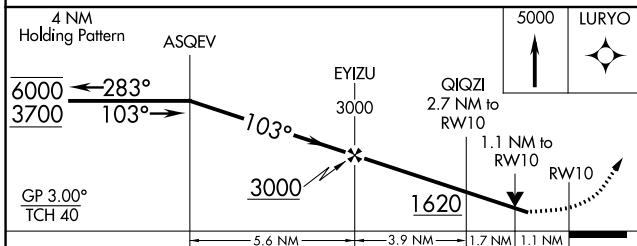
AWOS-3 <b>119.225</b>	ALBANY APP CON <b>118.05</b>	UNICOM <b>122.7 (CTAF)</b>
--------------------------	---------------------------------	-------------------------------



NE-2, 13 JUN 2024 to 11 JUL 2024

NE-2, 13 JUN 2024 to 11 JUL 2024

ELEV 881	TDZE 879
----------	----------



CATEGORY	A	B	C	D
LPV DA	1129-3/4	250 (300-3/4)		NA
LNAV/VNAV DA	1129-3/4	250 (300-3/4)		NA
LNAV MDA	1240-1	361 (400-1)		NA
<b>C</b> CIRCLING	1280-1 399 (400-1)	1340-1 459 (500-1)		NA

MIRL Rwy 10-28 **⓪**  
REIL Rwy 10 and 28 **⓪**