

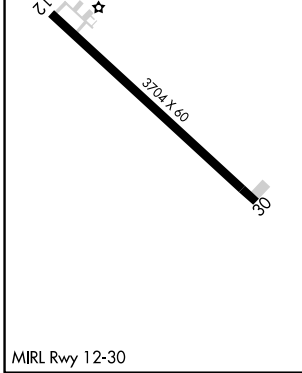
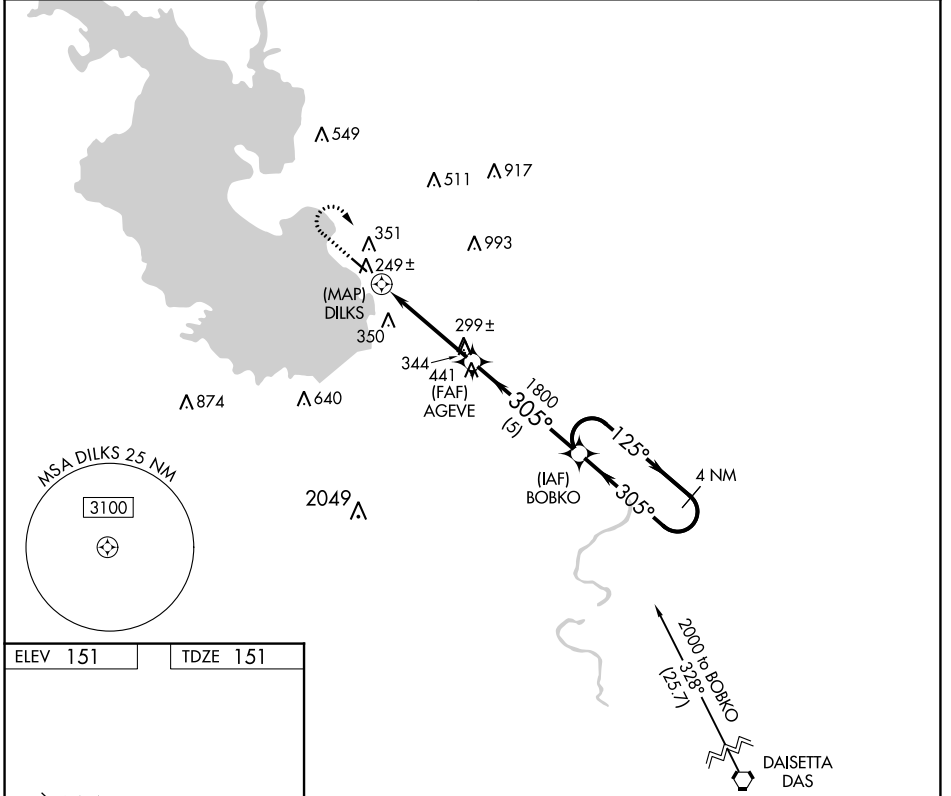
APP CRS 305°	Rwy Idg TDZE Apt Elev	3704 151 151
------------------------	-----------------------------	---

RNAV (GPS) RWY 30

LIVINGSTON MUNI (00R)

RNP APCH-GPS.	MISSED APPROACH: Climb to 1000 then climbing right turn to 2000 direct BOBK0 WP and hold.
<p>▼ Use Conroe/North Houston Rgnl altimeter setting. Rwy 30 helicopter visibility reduction below 1 SM NA. Night landing: Rwy 30 NA.</p> <p>▲ NA</p>	

HOUSTON CENTER 125.175 285.575	UNICOM 122.7 (CTAF)
--	-------------------------------



1000	2000	BOBK0	Visual Segment - Obstacles.	4 NM Holding Pattern
↑	↻	✦	AGEVE	BOBK0
DILKS		1800	305°	125° → 2000
0.7	4.3 NM	5 NM		← 305°
CATEGORY	A	B	C	D
LNAV MDA	680-1	529 (600-1)	680-1½ 529 (600-1½)	NA
CIRCLING	800-1	649 (700-1)	800-1¾ 649 (700-1¾)	NA

SC-5, 13 JUN 2024 to 11 JUL 2024

SC-5, 13 JUN 2024 to 11 JUL 2024