

LOC/DME I-GAO 109.1 Chan 28	APP CRS 359°	Rwy Idg 6500 TDZE -2 Apt Elev 0
--	------------------------	--

ILS or LOC RWY 36

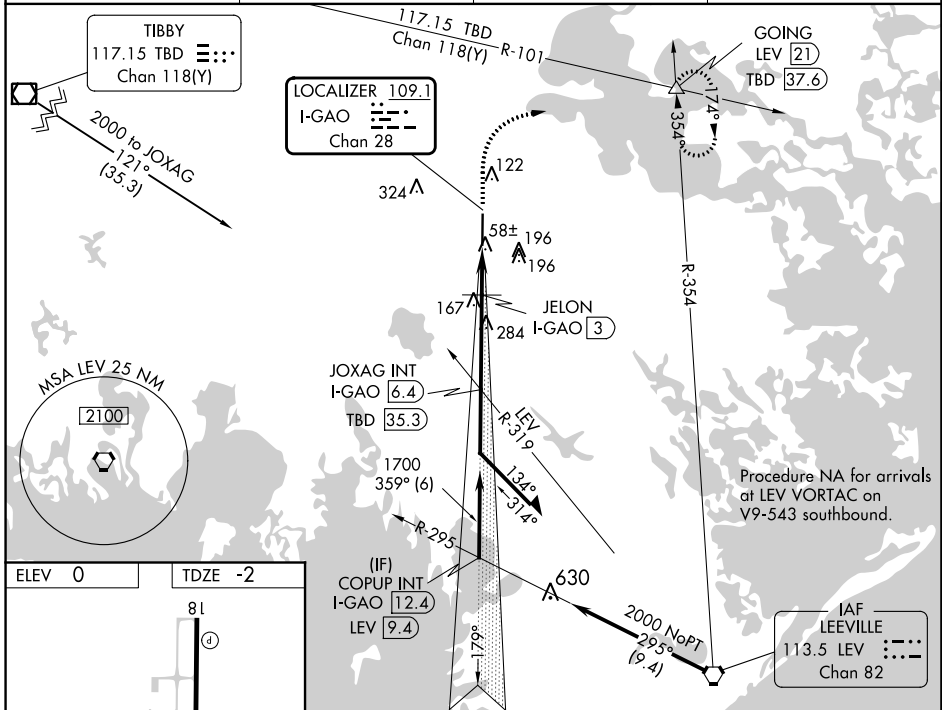
SOUTH LAFOURCHE LEONARD MILLER JR (GAO)

DME required.

SSALR

MISSED APPROACH: Climb to 1200, then climbing right turn to 2000 on heading 050° and TBD VOR/DME R-101 to GOING INT/LEV 21 DME and hold.

AWOS-3PT 118.175	NEW ORLEANS APP CON 120.85 256.9	CLNC DEL 120.85	UNICOM 123.0 (CTAF) 0
----------------------------	--	---------------------------	---------------------------------



ELEV 0	TDZE -2				
		1200 ↑ hdg 050° TBD R-101	2000 ↘ GOING △	JOXAG INT I-GAO (6.4)	Remain within 10 NM
		*LOC only.	*I-GAO (2.1)	JELON I-GAO (3)	1700
		I-GAO (1.2)	620*	1700	359°
		0.9 NM	0.9 NM	3.4 NM	179°
		CATEGORY	A	B	C
		S-ILS 36	198-1/2 200 (200-1/2)		
		S-LOC 36	320-1/2 322 (400-1/2)		
		C CIRCLING	440-1 440 (500-1)	560-1 560 (600-1)	640-1 3/4 640 (700-1 3/4)
					640-2 640 (700-2)

SC-4, 13 JUN 2024 to 11 JUL 2024

SC-4, 13 JUN 2024 to 11 JUL 2024