

WAAS CH 63224 W07A	APP CRS 072°	Rwy Idg TDZE 2653 Apt Elev 2653	4299
--	------------------------	---	-------------

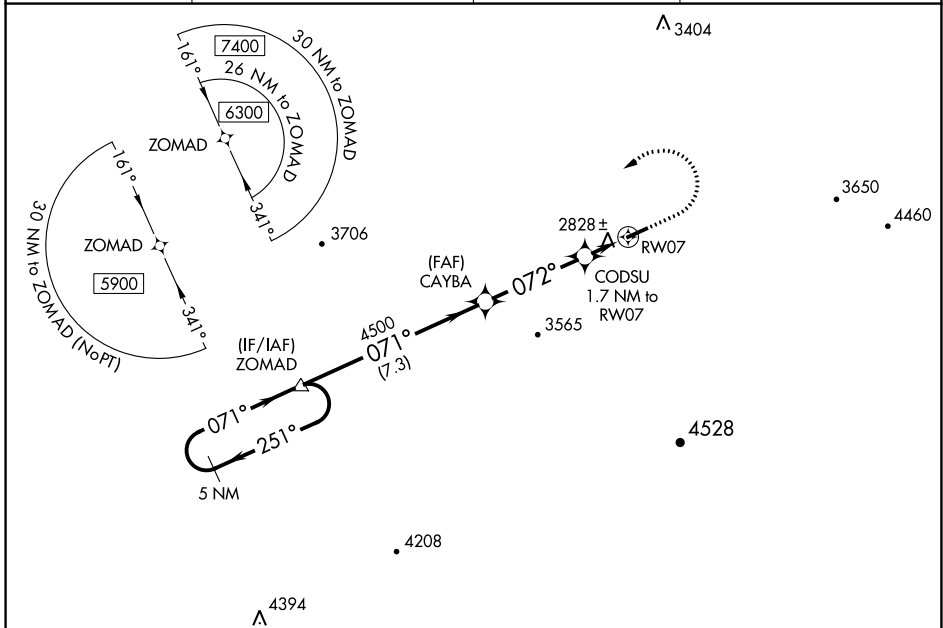
RNAV (GPS) RWY 7

TAZEWELL COUNTY (JF'Z)

▼ DME/DME RNP-0.3 NA. Visibility reduction by helicopters NA. When local altimeter setting not received, use Wise altimeter setting and increase all MDA 100 feet, increase LP and LNAV Cat C visibility 1/4 mile and Circling Cat C visibility 1/2 mile. Procedure NA at night.
▲ Circling NA for Cat C south of Rwy 7-25.

MISSED APPROACH: Climb to 3200 then climbing left turn to 5900 direct ZOMAD and hold, continue climb-in-hold to 5900.

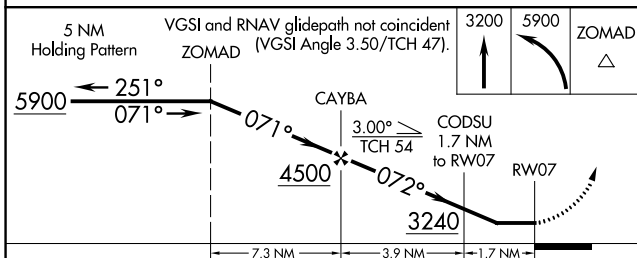
AWOS-3 118.075	ATLANTA CENTER 127.85 269.3	GCO 135.075	UNICOM 123.05 (CTAF) 0
--------------------------	---------------------------------------	-----------------------	----------------------------------



NE-3, 13 JUN 2024 to 11 JUL 2024

NE-3, 13 JUN 2024 to 11 JUL 2024

ELEV	2653	TDZE	2653
------	------	------	------



CATEGORY	A	B	C	D
LP MDA	3080-1	427 (500-1)	3080-1 1/4 427 (500-1 1/4)	NA
LNAV MDA	3080-1	427 (500-1)	3080-1 1/4 427 (500-1 1/4)	NA
C CIRCLING	3240-1	587 (600-1)	3240-1 1/2 587 (600-1 1/2)	NA

