

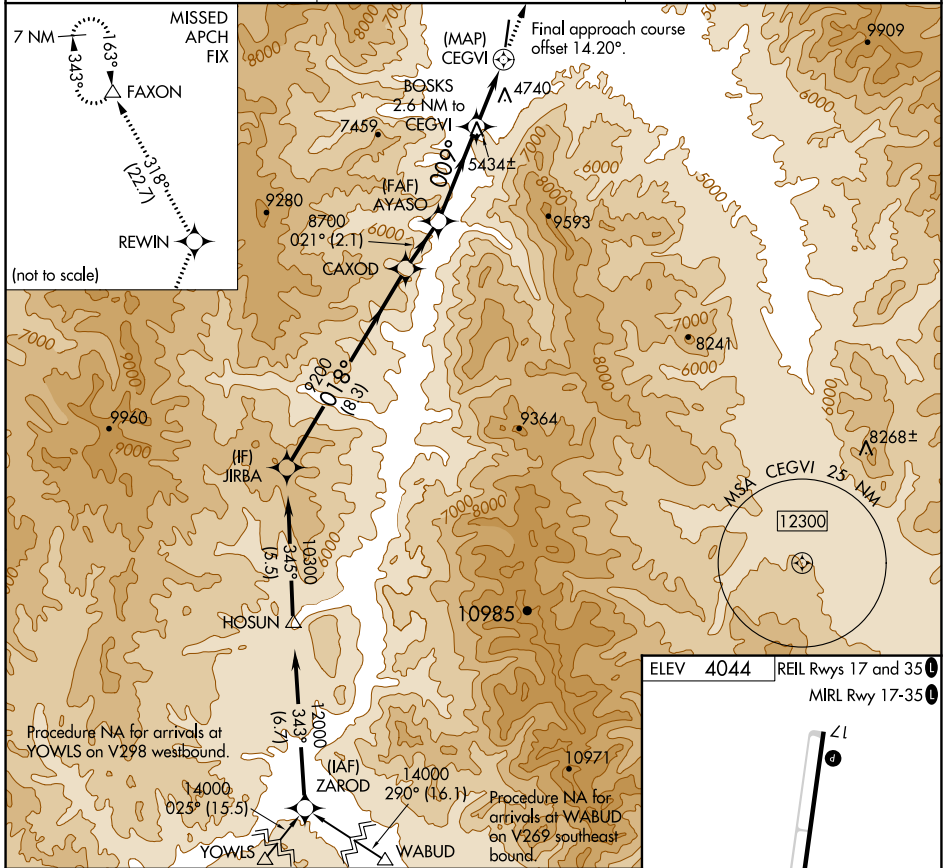
APP CRS 009°	Rwy Idg TDZE Apt Elev	N/A N/A 4044
------------------------	-----------------------------	---

RNAV (GPS)-D

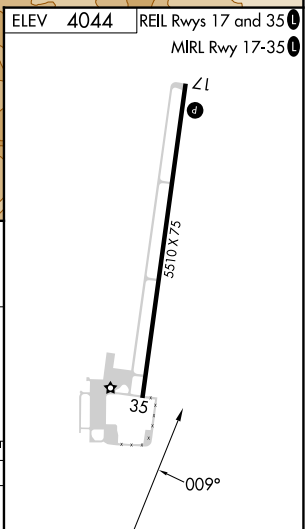
LEMHI COUNTY (SMN)

<p>V Circling Rwy 35 NA at night. A NA DME/DME RNP-0.3 NA. 88 -13°C Circling NA for Cat C east of Rwy 17-35.</p>	<p>MISSED APPROACH: Climb to 12000 direct REWIN and on track 318° to FAXON and hold, continue climb-in-hold to 12000.</p>
---	---

AWOS-3PT 135.075	SALT LAKE CENTER 132.4 338.3	UNICOM 122.8 (CTAF) 0
----------------------------	--	---------------------------------



JIRBA	CAXOD	AYASO	BOSKS 2.6 NM to CEGVI	CEGVI	FAXON
10300	9200	8700	7020	7020	
8.3 NM		2.1 NM	3.6 NM	2.6 NM	0.5
018°		021°	009°	318°	
A		B	C	D	
CIRCLING	6000-1¼ 1956 (2000-1¼)	6000-1½ 1956 (2000-1½)	6220-3 2176 (2200-3)	NA	



NW-1, 13 JUN 2024 to 11 JUL 2024

NW-1, 13 JUN 2024 to 11 JUL 2024