

WAAS CH 93628 W25A	APP CRS 254°	Rwy Idg TDZE Apt Elev	5000 1122 1122
--	------------------------	-----------------------------	---

RNAV (GPS) RWY 25

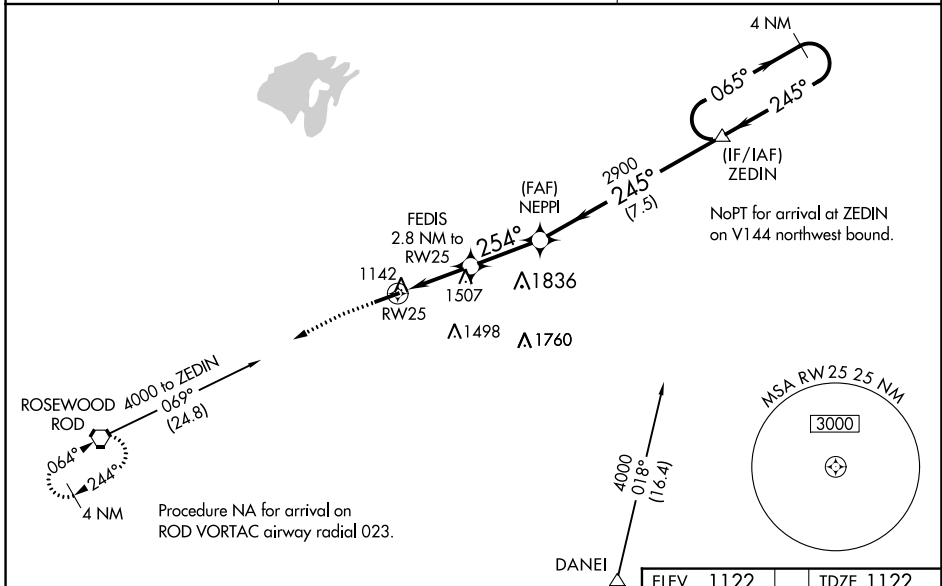
BELLEFONTAINE RGNL (E,D,J)

RNP APCH - GPS

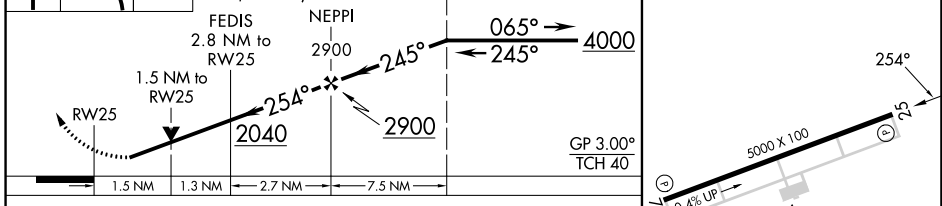
NA For uncompensated Baro-VNAV systems, LNAV/VNAV NA below -17°C or above 36°C.
Rwy 25 helicopter visibility reduction below 3/4 SM NA. When local altimeter setting not received, use James M Cox Dayton Intl altimeter setting and increase LPV DA to 1555 feet and all visibilities 1/8 SM; increase LNAV/VNAV DA to 1762 feet; increase all MDAs 100 feet and LNAV visibility Cat B 1/4 SM, Cat C and D 1/2 SM, and Circling visibility Cat B 1/4 SM, Cat C 1/2 SM, Cat D 1/4 SM. Baro-VNAV and VDP NA when using James M Cox Dayton Intl altimeter setting.

MISSED APPROACH:
Climb to 1900 then climbing left turn to 3000 direct ROD VORTAC and hold.

AWOS-3 118.075	COLUMBUS APP CON 134.45 294.5	UNICOM 122.8 (CTAF)
---------------------------------	--	--------------------------------------



ELEV 1122	TDZE 1122
------------------	------------------



CATEGORY	A	B	C	D
LPV DA		1457-1 1/8	335 (400-1 1/8)	
LNAV/VNAV DA		1664-1 7/8	542 (600-1 7/8)	
LNAV MDA	1820-1	698 (700-1)	1820-2	698 (700-2)
CIRCLING	1820-1	698 (700-1)	1860-2 738 (800-2)	1980-2 3/4 858 (900-2 3/4)

MIRL Rwy 7-25
REIL Rwy 7 and 25

EC-2, 13 JUN 2024 to 11 JUL 2024

EC-2, 13 JUN 2024 to 11 JUL 2024