

APP CRS
088°

Rwy Idg **3500**
TDZE **1069**
Apt Elev **1069**

RNAV (GPS) Z RWY 9

GREENE COUNTY (WAY)

RNP APCH - GPS.

▼ Procedure NA at night. Rwy 9 helicopter visibility reduction below 1 SM NA. Use Washington altimeter setting.

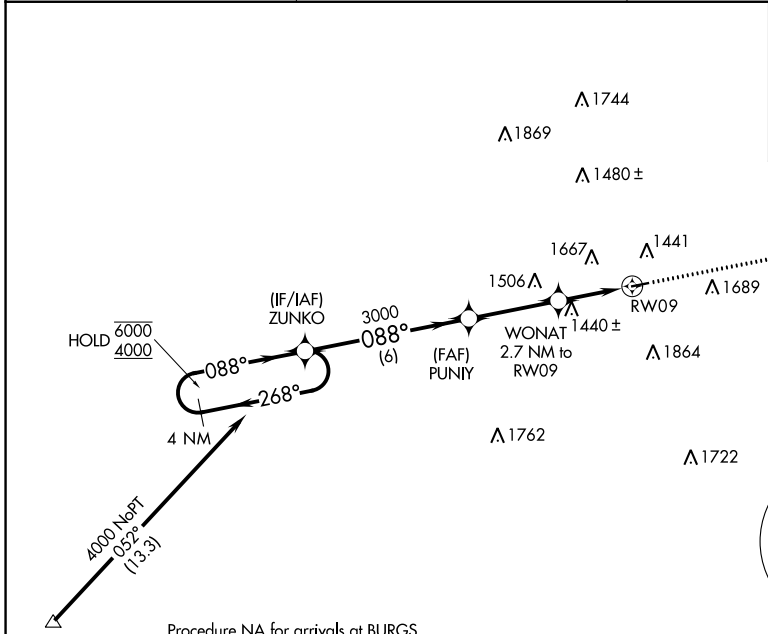
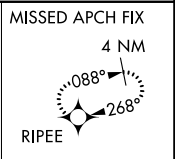
▲ NA

MISSED APPROACH: Climb to 4000 direct RIPEE and hold, continue climb-in-hold to 4000.

AFJ AWOS-3PT
119.175

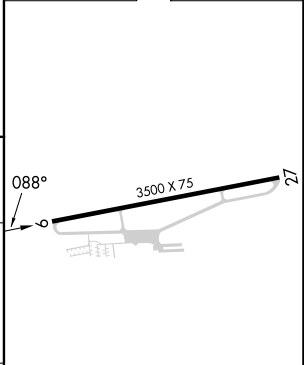
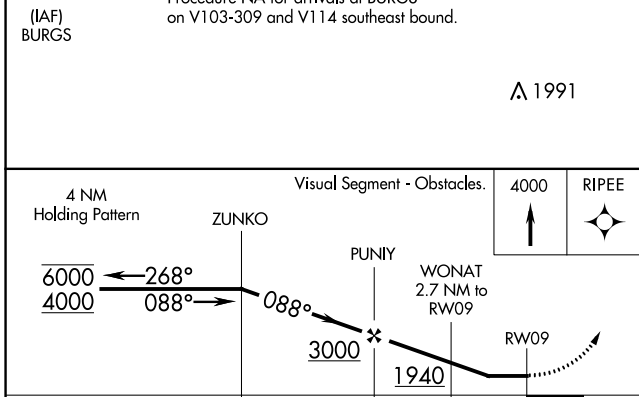
CLARKSBURG APP CON*
121.15 284.65

UNICOM
122.8 (CTAF) 0



Procedure NA for arrivals at BURGS on V103-309 and V114 southeast bound.

ELEV 1069 TDZE 1069



CATEGORY	A	B	C	D
LNVA MDA	1760-1	691 (700-1)	1760-2 691 (700-2)	NA
C CIRCLING	1880-1¼ 811 (900-1¼)	2220-1½ 1151 (1200-1½)	2280-3 1211 (1300-3)	NA

NE-4, 13 JUN 2024 to 11 JUL 2024

NE-4, 13 JUN 2024 to 11 JUL 2024