

|  |                        |                             |   |
|--|------------------------|-----------------------------|---|
| WAAS<br>CH <b>57940</b><br><b>W35A</b> | APP CRS<br><b>351°</b> | Rwy Idg<br>TDZE<br>Apt Elev | <b>5943</b><br><b>675</b><br><b>693</b> |
|--|------------------------|-----------------------------|---|

# RNAV (GPS) RWY 35

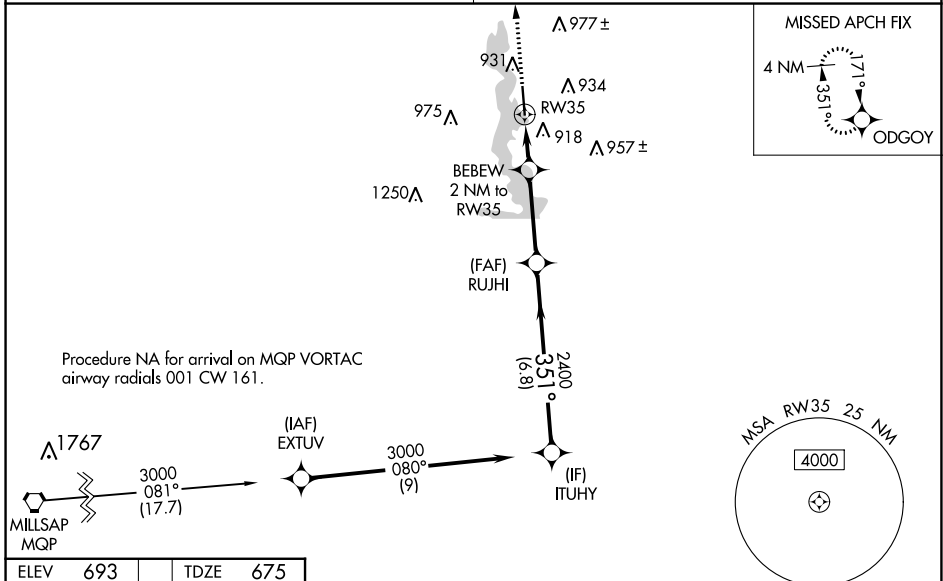
KENNETH COPELAND (4T2)

RNP APCH.

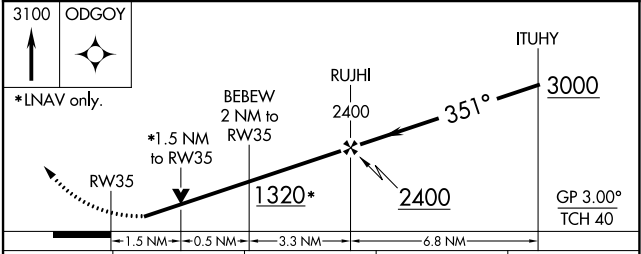
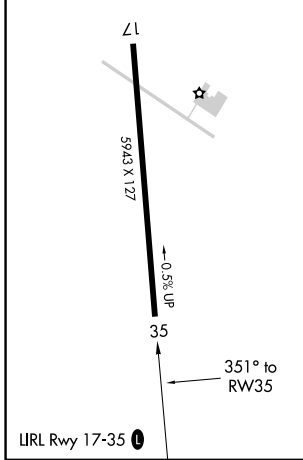
**⚠️** **⚠️** Baro-VNAV and VDP NA when using Fort Worth Meacham Intl altimeter setting. Rwy 35 helicopter visibility reduction below ¾ SM NA. For uncompensated Baro-VNAV systems, LNAV/VNAV NA below -16°C or above 54°C. Obtain local altimeter setting on CTAF; when not received, use Fort Worth Meacham Intl altimeter setting: Increase LPV DA to 955 feet; increase LNAV/VNAV DA to 1144 feet; increase all MDA 40 feet and LNAV Cat C/D and Circling Cat C visibility ¼ SM.

MISSED APPROACH:  
Climb to 3100 direct ODGOY and hold.

|   |                                 |
|---|---------------------------------|
| REGIONAL APP CON<br><b>125.8 257.95</b> | UNICOM<br><b>123.075 (CTAF)</b> |
|---|---------------------------------|



|          |          |
|----------|----------|
| ELEV 693 | TDZE 675 |
|----------|----------|



| CATEGORY     | A                    | B                    | C                    | D |
|--------------|----------------------|----------------------|----------------------|---|
| LPV DA       | 925-1 250 (300-1)    |                      |                      |   |
| LNAV/VNAV DA | 1114-1½ 439 (500-1½) |                      |                      |   |
| LNAV MDA     | 1180-1 505 (500-1)   | 1180-1¾ 505 (500-1¾) |                      |   |
| CIRCLING     | 1240-1 547 (600-1)   | 1340-1¾ 647 (700-1¾) | 1440-2½ 747 (800-2½) |   |

SC-2, 13 JUN 2024 to 11 JUL 2024

SC-2, 13 JUN 2024 to 11 JUL 2024