

| | | |
|--|------------------------|---|
| WAAS CH 69239 W36A | APP CRS 358° | Rwy ldg 4238 TDZE 779 Apt Elev 783 |
|--|------------------------|---|

RNAV (GPS) RWY 36

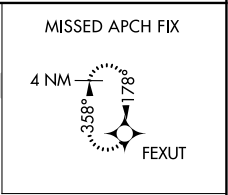
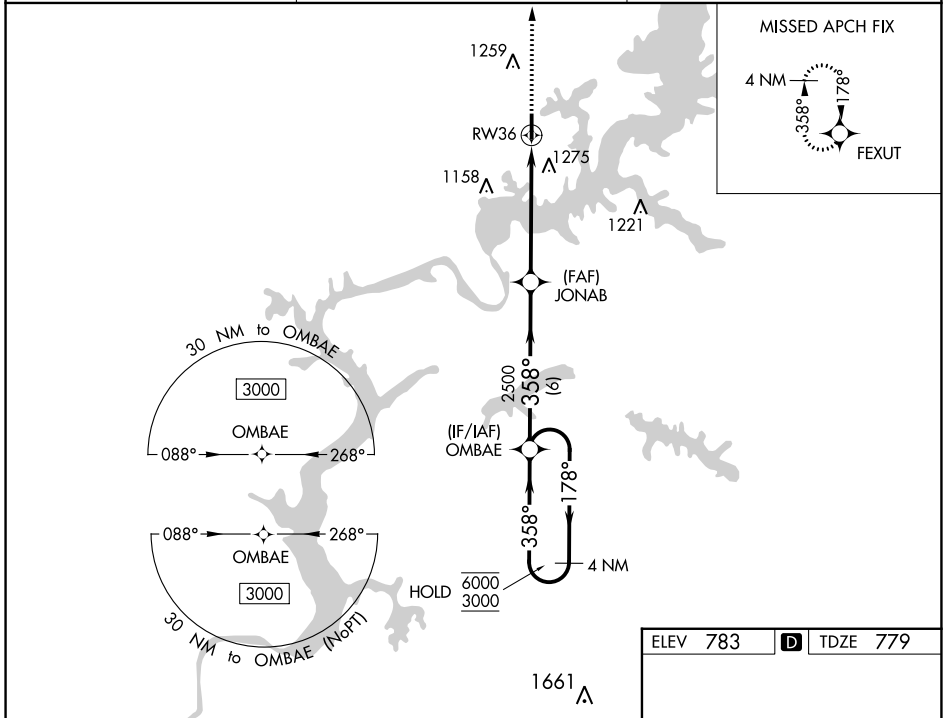
SOUTH GRAND LAKE RGNL (1K8)

RNP APCH - GPS.

⚠ NA Circling to Rwy 18 NA at night. Rwy 36 helicopter visibility reduction below $\frac{3}{4}$ SM NA. Baro-VNAV NA. Use South Grand Lake Rgnl altimeter setting; when not received, use Grove altimeter setting.

MISSED APPROACH: Climb to 3000 direct FEXUT and hold.

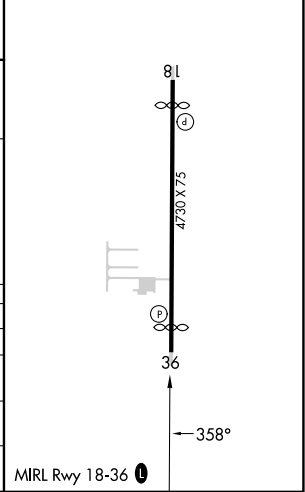
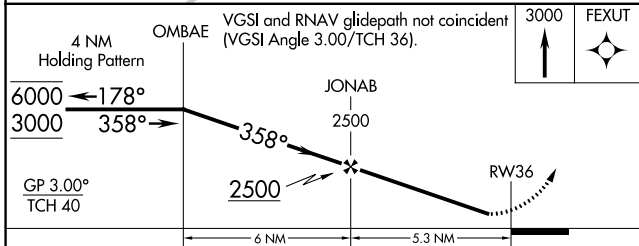
| | | |
|---------------------------|--|----------------------|
| AWOS-3PT 118,15 | KANSAS CITY CENTER 128,6 282,325 | CTAF 122,9 |
|---------------------------|--|----------------------|



SC-1, 13 JUN 2024 to 11 JUL 2024

SC-1, 13 JUN 2024 to 11 JUL 2024

| | |
|----------|-------------------|
| ELEV 783 | D TDZE 779 |
|----------|-------------------|



| CATEGORY | A | B | C | D |
|-------------------|-----------------------|-------------------------|-------------------------|----|
| LPV DA | 1068-1 | 289 (300-1) | | NA |
| LNAV/VNAV DA | 1635-2½ | 856 (900-2½) | | NA |
| LNAV MDA | 1540-1 761 (800-1) | 1540-1¼ 761 (800-1¼) | 1540-2½ 761 (800-2½) | NA |
| C CIRCLING | 1540-1 757 (800-1) | 1620-1¼ 837 (900-1¼) | 1620-2½ 837 (900-2½) | NA |

MIRL Rwy 18-36 **⓪**