

ALAMOGORDO, NEW MEXICO

HI-ILS or LOC RWY 22

LOC I-HMN 111.7	APCH CRS 218°	Rwy ldg 10,578 TDZE 4083 Arprt Elev 4093
---------------------------	-------------------------	--

AL-7 [USAF]

HOLLOMAN AFB (KHMM)

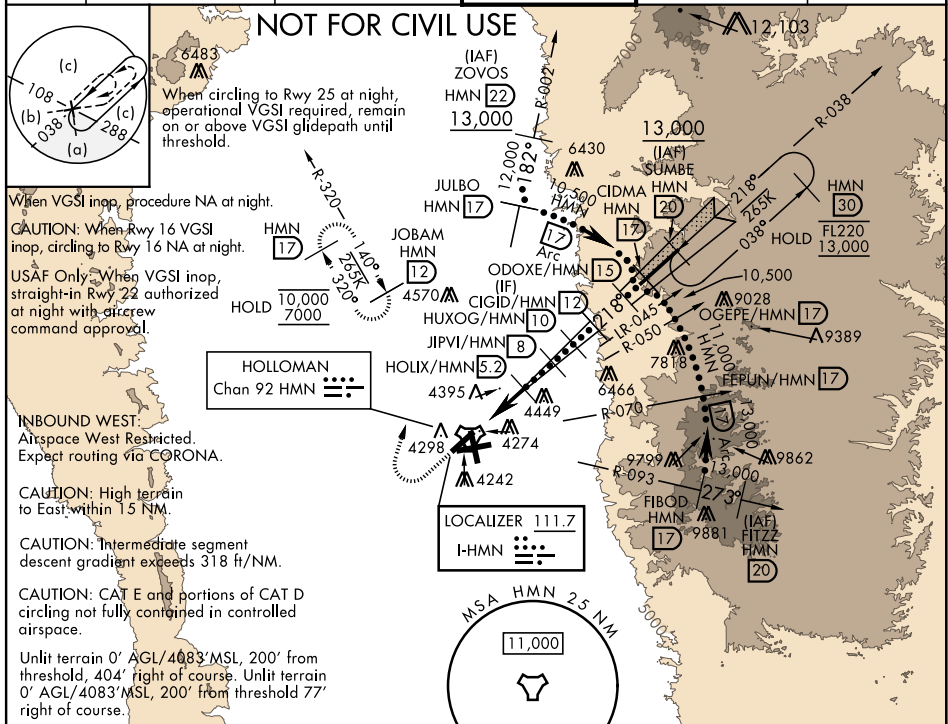
RADAR or DME required.

▼ *When ALS inop, increase vis to ¾ miles.
**When ALS inop, increase vis to 1¾ miles.



MISSED APPROACH: Climb straight ahead to 7000, passing 5000 turn right and intercept HMN R-320 tower to JOBAM and hold.

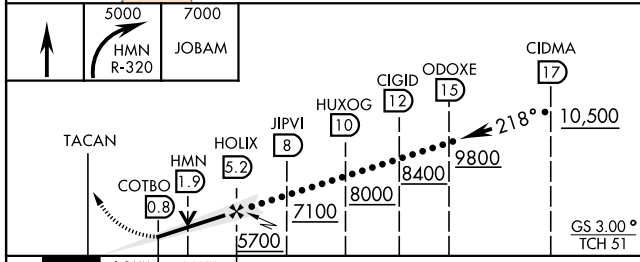
ATIS ★ 273.5	ALBUQUERQUE CENTER 132.65 257.6	APP CON 120.6 269.225	TOWER ★ 119.3 254.4	GND CON 127.05 275.8	CLNC DEL 126.7 289.4
------------------------	---	---------------------------------	-------------------------------	--------------------------------	--------------------------------



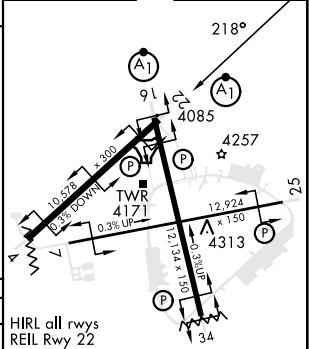
SW-1, 11 JUL 2024 to 08 AUG 2024

SW-1, 11 JUL 2024 to 08 AUG 2024

EMERG SAFE ALT 100 NM 14,200



ELEV 4093	TDZE 4083
-----------	-----------



CATEGORY	C	D	E
S-ILS 22*	4283-½	200 (200-½)	
S-LOC 22**	4680-1¼	597 (600-1¼)	
CIRCLING	4680-1¾ 587 (600-1¾)	4740-2 647 (700-2)	4780-2½ 687 (700-2½)

FAF to MAP 4.4 NM					
Knots	120	140	160	180	200
Min:Sec	2:12	1:53	1:39	1:28	1:19

ALAMOGORDO, NEW MEXICO

32°52'N - 106°06'W

HOLLOMAN AFB (KHMM)

Amtd 2 10AUG23

HI-ILS or LOC RWY 22