

HI-ILS or LOC Z RWY 16

LOC I-MUK 108.9	APCH CRS 158°	Rwy ldg 12,134 TDZE 4083 Arprt Elev 4093
---------------------------	-------------------------	---

AL-7 [USAF]

HOLLOMAN AFB (KHMN)

RADAR or DME required.
 ▼ *When ALS inop, increase CAT CDE vis to 3/4 mile.
 **When ALS inop, increase CAT CDE vis to 1 3/8 miles.

ALS-F-1
 MISSED APPROACH: Climb straight ahead to 7000, passing 5000 turn right and intercept HMN R-320 outbound to JOBAM and hold.

ATIS ★ 273.5	ALBUQUERQUE CENTER 132.65 257.6	APP CON 120.6 269.225	TOWER ★ 119.3 254.4	GND CON 127.05 275.8	CLNC DEL 126.7 289.4
------------------------	---	---------------------------------	-------------------------------	--------------------------------	--------------------------------

When circling to Rwy 25 at Night, operational VGSI required, remain on or above VGSI glidepath until threshold.

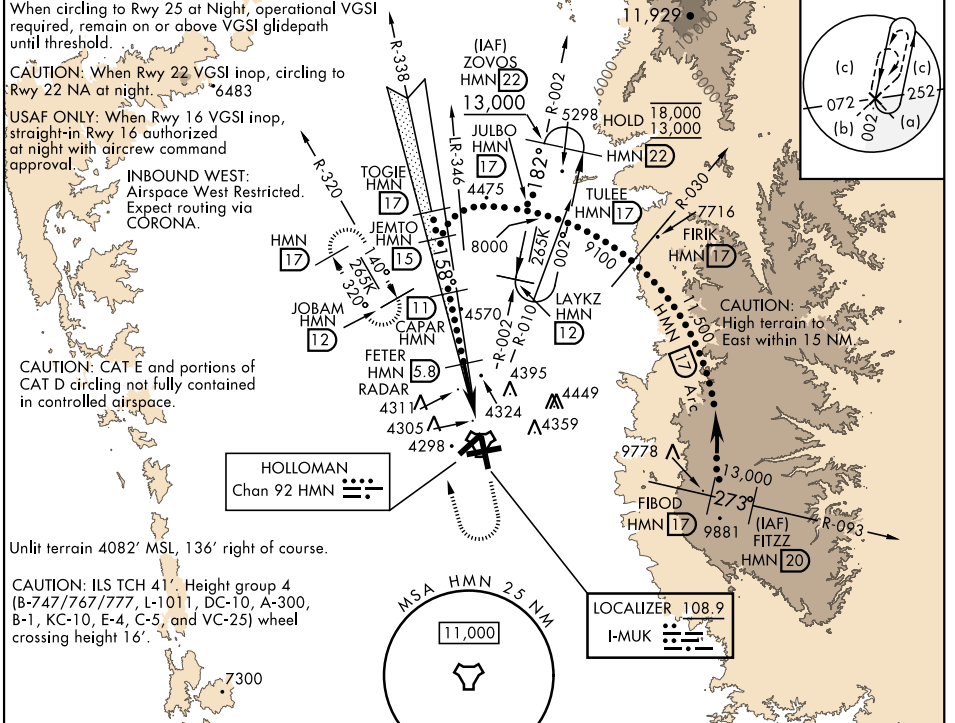
CAUTION: When Rwy 22 VGSI inop, circling to Rwy 22 NA at night. *6483

USAF ONLY: When Rwy 16 VGSI inop, straight-in Rwy 16 authorized at night with aircrew command approval.

INBOUND WEST:
 Airspace West Restricted.
 Expect routing via CORONA.

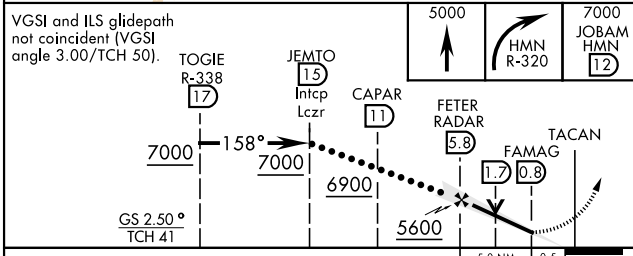
CAUTION: CAT E and portions of CAT D circling not fully contained in controlled airspace.

Unlit terrain 4082' MSL, 136' right of course.
 CAUTION: ILS TCH 41. Height group 4 (B-747/767/777, L-1011, DC-10, A-300, B-1, KC-10, E-4, C-5, and VC-25) wheel crossing height 16'.



EMERG SAFE ALT 100 NM 14,200

VGSI and ILS glidepath not coincident (VGSI angle 3.00/TCH 50).



ELEV 4093	TDZE 4083
HIRL all rwys REIL Rwy 22	
FAF to MAP 5.0 NM	
Knots	120 140 160 180 200
Min:Sec	2:30 2:09 1:53 1:40 1:30

HI-ILS or LOC Z RWY 16

SW-1, 11 JUL 2024 to 08 AUG 2024

SW-1, 11 JUL 2024 to 08 AUG 2024