

HI-TACAN RWY 22

TACAN HMN Chan 92	APCH CRS 214°	Rwy ldg 10,578 TDZE 4083 Arpt Elev 4093
-----------------------------	-------------------------	--

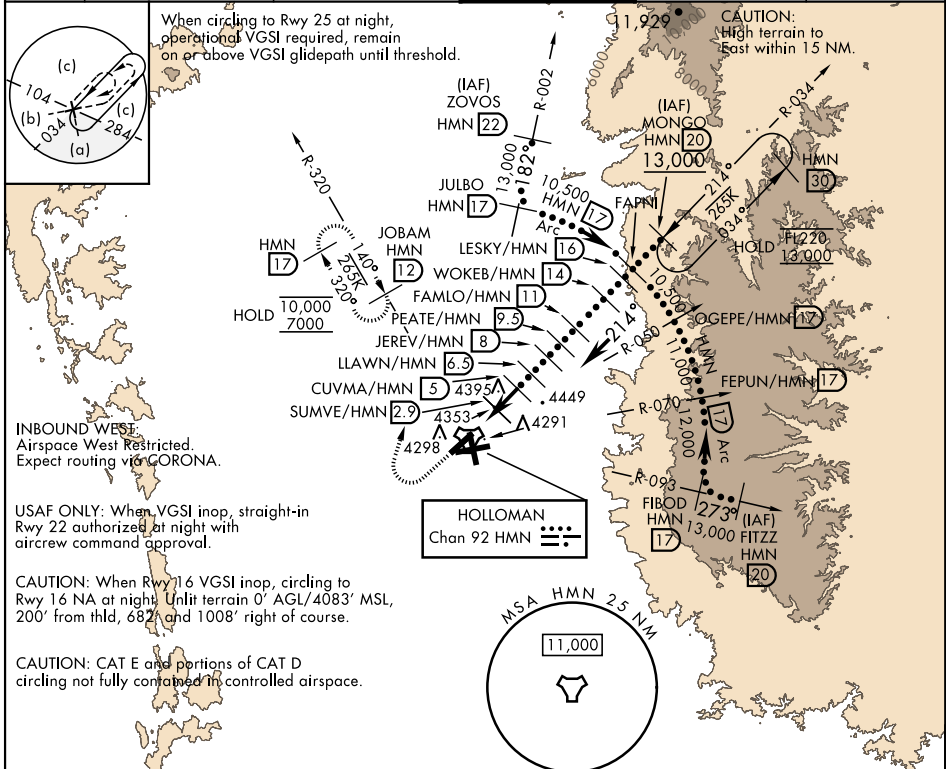
AL-7 [USAF]

HOLLOMAN AFB (KHMN)

▼ *When ALS inop, increase CAT CDE vis to 1½ miles.
When VGSI inop, procedure NA at night.

ALSF-1 MISSED APPROACH: Climb straight ahead to 7000, passing 5000 turn right and intercept HMN TACAN R-320 outbound to JOBAM and hold.

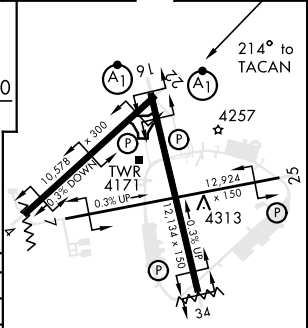
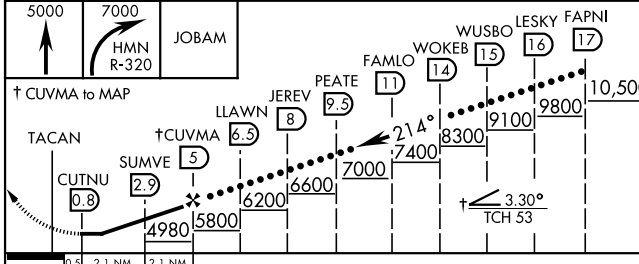
ATIS ★ 273.5	ALBUQUERQUE CENTER 132.65 257.6	APP CON 120.6 269.225	TOWER ★ 119.3 254.4	GND CON 127.05 275.8	CLNC DEL 126.7 289.4
------------------------	---	---------------------------------	-------------------------------	--------------------------------	--------------------------------



SW-1, 11 JUL 2024 to 08 AUG 2024

SW-1, 11 JUL 2024 to 08 AUG 2024

EMERG SAFE ALT 100 NM 14,200 VGSI and descent angle not coincident, VGSI angle 2.50°/TCH 53. ELEV 4093 TDZE 4083



CATEGORY	C	D	E
S-22 *	4620-1	537 (600-1)	
CIRCLING	4680-1½ 587 (600-1½)	4720-2 647 (700-2)	4780-2½ 687 (700-2½)

HIRL all rwys
REIL Rwy 22

HI-TACAN RWY 22