

# HI-TACAN RWY 34

TACAN HMN Chan <b>92</b>	APCH CRS <b>334°</b>	Rwy ldg <b>12,134</b> TDZE <b>4058</b> Arprt Elev <b>4093</b>
-----------------------------	-------------------------	---------------------------------------------------------------------

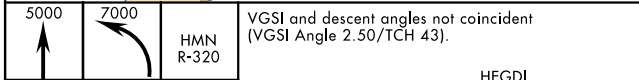
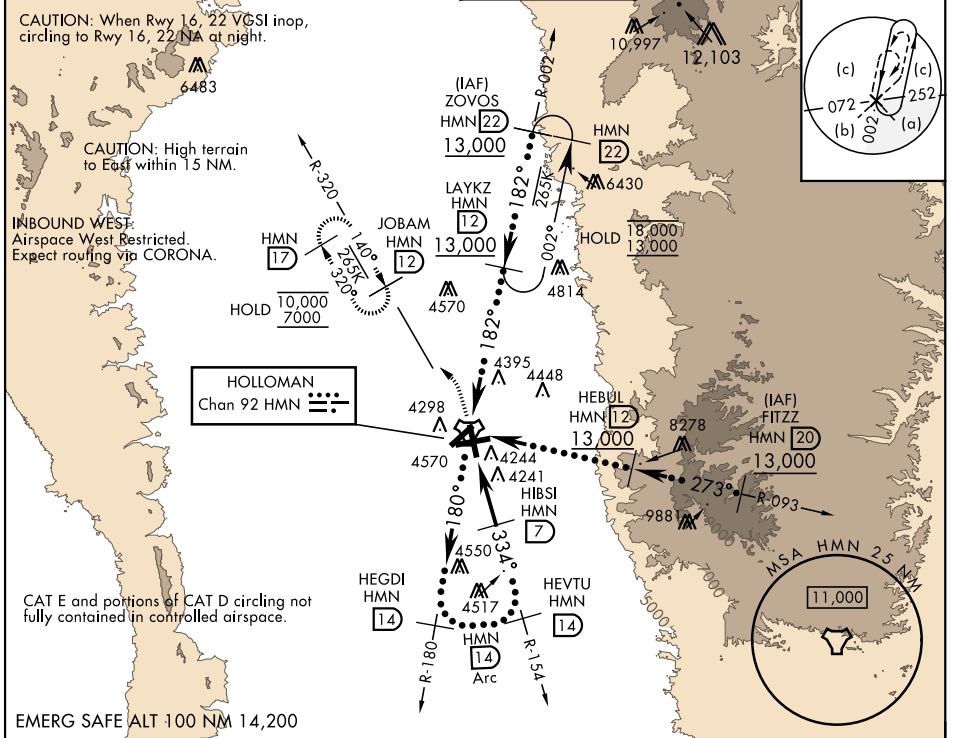
AL-7 [USAF]

HOLLOMAN AFB (KHMN)

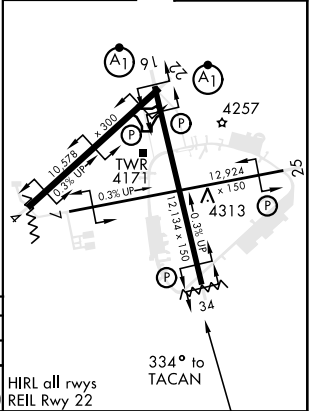
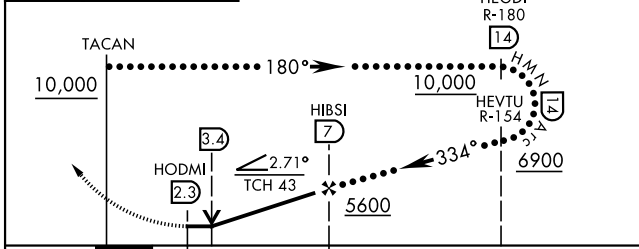
When circling to Rwy 25 at night, operational VGSI required, remain on or above VGSI glidepath until threshold.

MISSÉ APPROACH: Climb straight ahead to 7000, passing 5000 turn left to intercept HMN TACAN R-320 to JOBAM and hold.

ATIS ★ <b>273.5</b>	ALBUQUERQUE CENTER <b>132.65 257.6</b>	APP CON <b>120.6 269.225</b>	TOWER ★ <b>119.3 254.4</b>	GND CON <b>127.05 275.8</b>	CLNC DEL <b>126.7 289.4</b>
------------------------	-------------------------------------------	---------------------------------	-------------------------------	--------------------------------	--------------------------------



ELEV 4093	TDZE 4058
-----------	-----------



CATEGORY	A	B	C	D	E
S-34	4540-1	482 (500-1)	4540-1 <sup>3</sup> / <sub>8</sub>	482 (500-1 <sup>3</sup> / <sub>8</sub> )	
<b>C</b> CIRCLING	4640-1	547 (600-1)	4680-1 <sup>1</sup> / <sub>2</sub> 587 (600-1 <sup>1</sup> / <sub>2</sub> )	4740-2 647 (700-2)	4780-2 <sup>1</sup> / <sub>2</sub> 687 (700-2 <sup>1</sup> / <sub>2</sub> )

HIRL all rwys  
REIL Rwy 22

334° to TACAN

# HI-TACAN RWY 34

SW-1, 11 JUL 2024 to 08 AUG 2024

SW-1, 11 JUL 2024 to 08 AUG 2024