

WAAS CH 48815 W17A	APP CRS 167°	Rwy Idg 5219 TDZE 196 Apt Elev 196
--	------------------------	---

RNAV (GPS) RWY 17

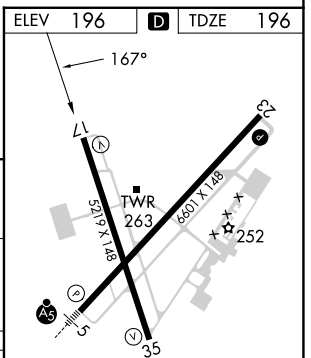
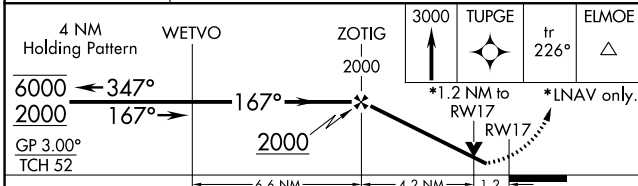
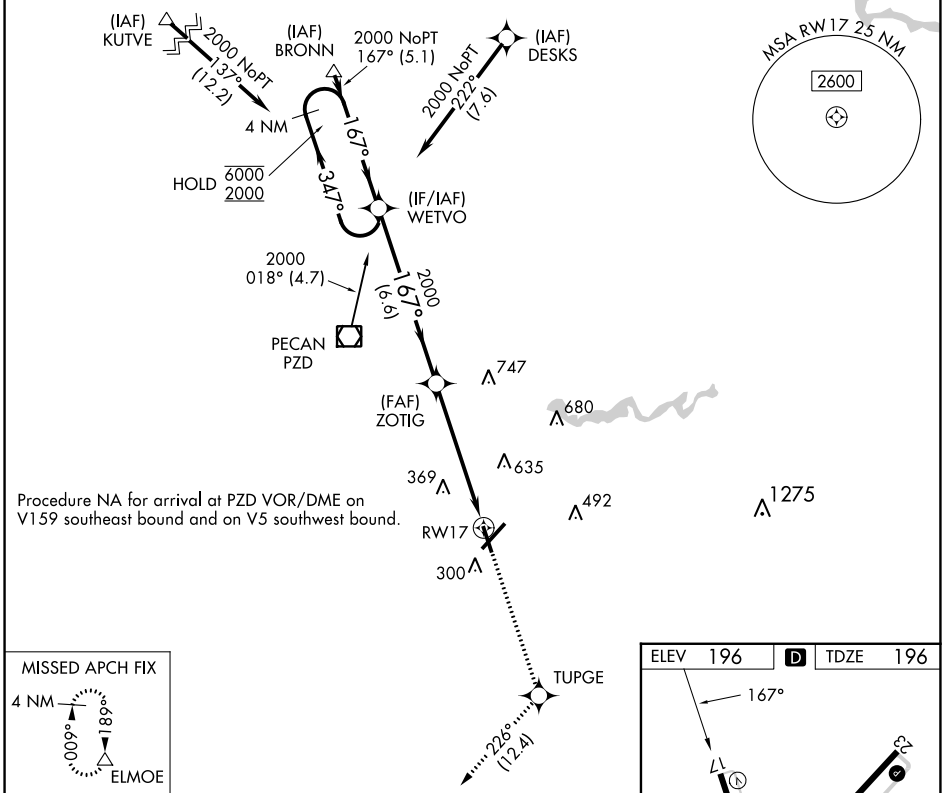
SOUTHWEST GEORGIA RGNL (ABY)

RNP APCH.

▼ Rwy 17 helicopter visibility reduction below 3/4 SM NA. For uncompensated Baro-VNAV systems, LNAV/VNAV NA below -7°C or above 54°C.

MISSED APPROACH: Climb to 3000 direct TUPGE and on track 226° to ELMOE and hold.

ATIS 133.05	JACKSONVILLE CENTER 125.75 363.075	ALBANY TOWER * 120.25 (CTAF) 0336.4	GND CON 121.9 348.6	UNICOM 122.95
-----------------------	--	---	-------------------------------	-------------------------



CATEGORY	A	B	C	D
LPV DA		534-1¼	338 (400-1¼)	
LNAV/VNAV DA		603-1½	407 (500-1½)	
LNAV MDA	640-1	444 (500-1)	640-1¼ 444 (500-1¼)	640-1½ 444 (500-1½)
CIRCLING	640-1 444 (500-1)	660-1 464 (500-1)	940-2¼ 744 (800-2¼)	940-2½ 744 (800-2½)

HIRL Rwy 5-23

MIRL Rwy 17-35

REIL Rwy 35

REIL Rwy 17 and 23

SE-4, 11 JUL 2024 to 08 AUG 2024

SE-4, 11 JUL 2024 to 08 AUG 2024