

GRZZ FOUR DEPARTURE (RNAV)

AL-12 (FAA)

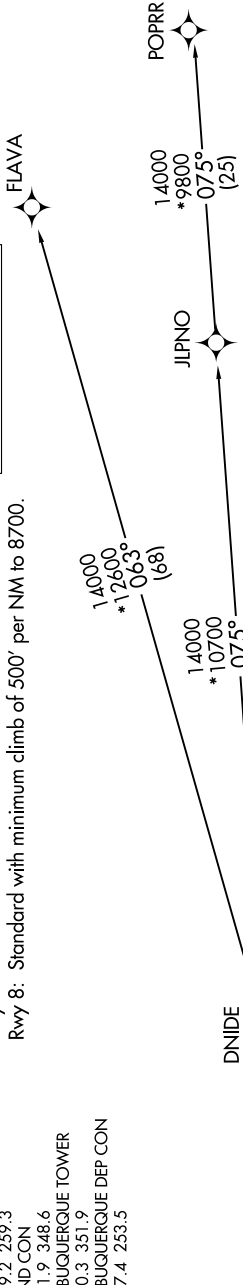
ALBUQUERQUE INTL SUNPORT (ABQ)
ALBUQUERQUE, NEW MEXICO

SW-1, 11 JUL 2024 to 08 AUG 2024

D-ATIS
118.0 257.7
CLNC DEL
119.2 259.3
GND CON
121.9 348.6
ALBUQUERQUE TOWER
120.3 351.9
ALBUQUERQUE DEP CON
127.4 253.5

TAKEOFF MINIMUMS
Rwy 3: Standard.
Rwy 8: Standard with minimum climb of 500' per NM to 8700.

**TOP ALTITUDE:
FL200**



NOTE: Takeoff Rwy 8, do not exceed 210K until passing TYILR.
NOTE: DME/DME/IRU or GPS required.
NOTE: For use by turbojet aircraft only.
NOTE: RNAV 1.
NOTE: RADAR required for non-GPS equipped aircraft.
NOTE: If unable to accept climb gradient, advise ATC on initial contact.

NOTE: Chart not to scale.

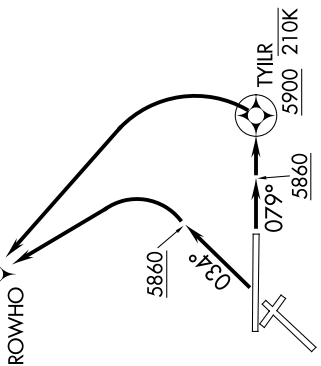
DEPARTURE ROUTE DESCRIPTION

TAKEOFF RUNWAY 3: Climb on heading 034° to 5860, then left turn direct ROWHO, then on track 357° to cross GRZZ at or above 13000, thence

TAKEOFF RUNWAY 8: Climb on heading 079° to 5860 and direct TYILR at or above 5900, then left turn direct ROWHO, then on track 357° to cross GRZZ at or above 13000, thence

. (transition). Maintain FL200, expect filed altitude ten minutes after departure.

FLAVA TRANSITION (GRZZ4.FLAVA)
JLPNO TRANSITION (GRZZ4.JLPNO)
POPRR TRANSITION (GRZZ4.POPRR)



GRZZ FOUR DEPARTURE (RNAV)

SW-1, 11 JUL 2024 to 08 AUG 2024