

# HI-ILS or LOC RWY 8

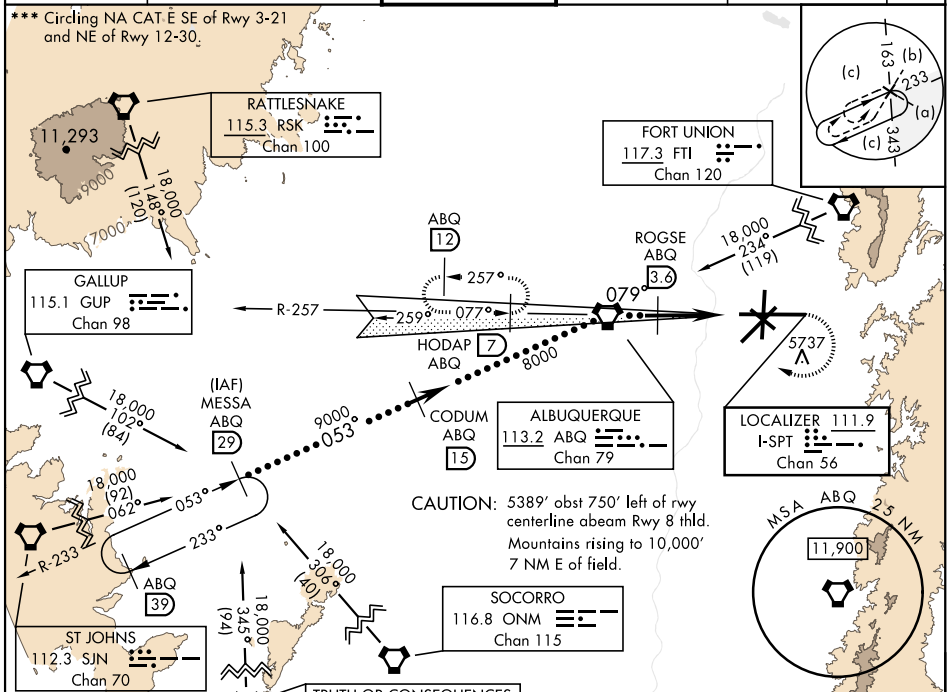
LOC I-SPT <b>111.9</b>	APCH CRS <b>079°</b>	Rwy ldg <b>12,793</b> TDZE <b>5320</b> Arprt Elev <b>5355</b>	AL-12 [USAF]	ALBUQUERQUE INTL SUNPORT (KABQ)
---------------------------	-------------------------	---------------------------------------------------------------------	--------------	---------------------------------

DME required.

A5 MALSR
 MISSED APPROACH: Climb to 5800 then climbing right turn to 8000 direct ABQ VORTAC and ABQ R-257 to HODAP/ABQ 7 DME and hold.

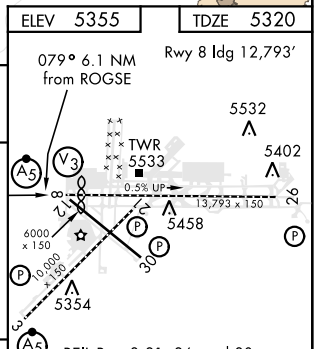
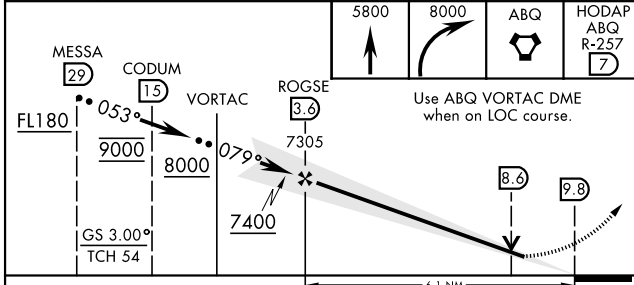
\* When ALS inop, increase RVR to 40 and vis to 3/4 mile.  
 \*\* When ALS inop, increase RVR to 60 and vis to 1 1/2 mile.

ATIS <b>118.0 257.7</b>	APP CON <b>123.9 354.1</b>	TOWER <b>120.3 351.9</b>	GND CON <b>121.9 348.6</b>	CLNC DEL <b>119.2 259.3</b>	ASR
----------------------------	-------------------------------	-----------------------------	-------------------------------	--------------------------------	-----



ELEV 5355	TDZE 5320
-----------	-----------

Rwy 8 ldg 12,793'



CATEGORY	C	D	E
S-ILS 8 *	5529/24	209 (300-1/2)	
S-LOC 8 **	5740/40	420 (500-3/4)	
CIRCLING ***	5920-1 1/2 (600-1 1/2)	6460-3	1105 (1200-3)

FAF to MAP 6.1 NM					
Knots	120	140	160	180	200
Min:Sec	3:03	2:37	2:17	2:02	1:50

# HI-ILS or LOC RWY 8

SW-1, 11 JUL 2024 to 08 AUG 2024

SW-1, 11 JUL 2024 to 08 AUG 2024