

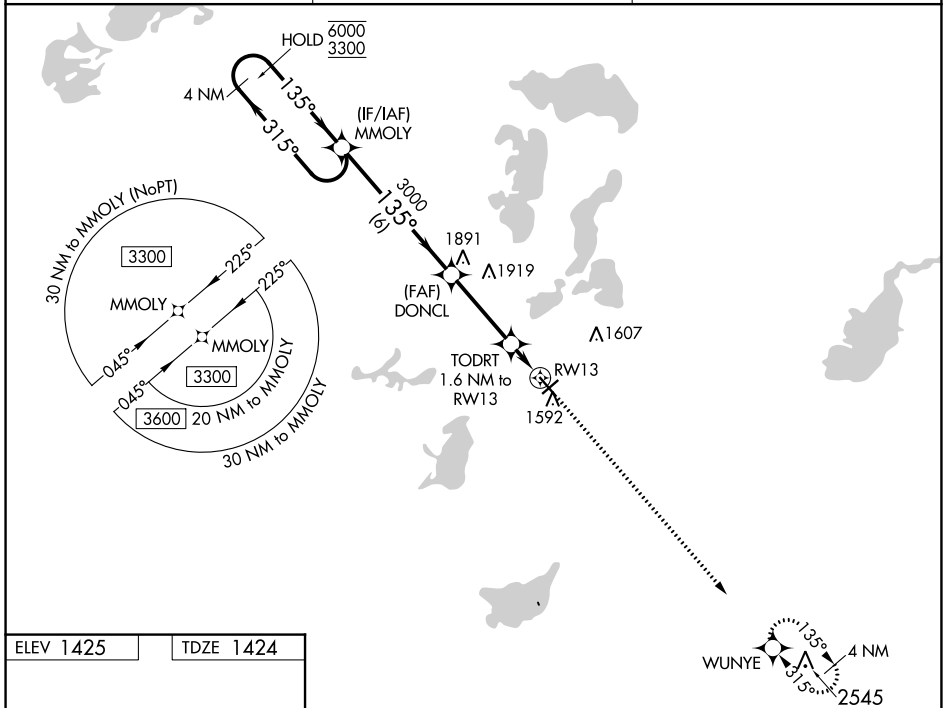
WAAS CH 50245 W13A	APP CRS 135°	Rwy Idg TDZE Apt Elev	5099 1424 1425
--	------------------------	-----------------------------	---

RNAV (GPS) RWY 13

ALEXANDRIA RGNL/CHANDLER FLD (A.XN)

RNP APCH - GPS.	MISSED APPROACH: Climb to 3600 direct WUNYE and hold.
<p>▼ For uncompensated Baro-VNAV systems, LNAV/VNAV NA below -24°C or above 54°C.</p>	

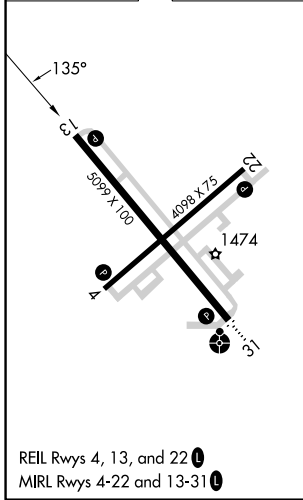
ASOS 118.375	MINNEAPOLIS CENTER 126.1 269.2	UNICOM 123.0 (CTAF) 0
------------------------	--	---------------------------------



NC-1, 11 JUL 2024 to 08 AUG 2024

NC-1, 11 JUL 2024 to 08 AUG 2024

ELEV 1425	TDZE 1424
-----------	-----------



4 NM Holding Pattern				VGSi and RNAV glidepath not coincident (VGSi Angle 3.00/TCH 34).				3600	WUNYE
6000	← 315°	→ 135°	3300		DONCL	3000		↑	✦
GP 3.00°				TCH 40					
				6 NM		3.3 NM		1.6 NM	
CATEGORY	A	B	C	D					
LPV DA	1674-1		250 (300-1)						
LNAV/VNAV DA	1721-1		297 (300-1)						
LNAV MDA	1800-1		376 (400-1)						
CIRCLING	1900-1	475 (500-1)	1940-1½ 515 (600-1½)		2000-2 575 (600-2)				