

WAAS CH 72927 W36A	APP CRS 359°	Rwy Idg TDZE Apt Elev	4850 59 61
--	------------------------	-----------------------------	---------------------------------------

RNAV (GPS) RWY 36

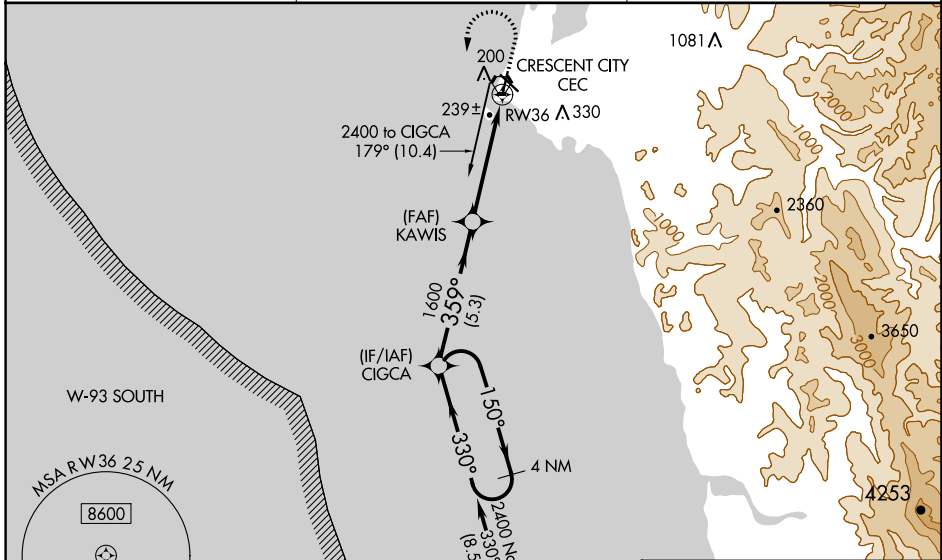
JACK MC NAMARA FLD (CEC)

RNP APCH.

▼ Baro-VNAV NA when using Brookings altimeter setting. For uncompensated Baro-VNAV systems, LNAV/VNAV NA below -15°C or above 54°C. When local altimeter setting not received, use Brookings altimeter setting and increase LPV DA to 406 and LNAV/VNAV DA to 505 and all MDA 100 feet; increase LPV all Cats and LNAV Cat C/D and Circling Cat D visibilities 1/4 SM, increase LNAV/VNAV all Cats visibility 3/8 SM, and Circling Cat C visibility 1/2 SM. Rwy 36 helicopter visibility reduction below 1 SM NA. Straight-In Rwy 36 at night, operational VGSI required, remain on or above VGSI glidepath until threshold. Circling Rwy 18, 30 NA at night.

MISSED APPROACH: Climb to 1300 then climbing left turn to 2400 direct CIGCA and hold.

ASOS 119.925	SEATTLE CENTER 124.85 306.3	UNICOM 122.8 (CTAF) 0
------------------------	---------------------------------------	---------------------------------



SW-2, 11 JUL 2024 to 08 AUG 2024

SW-2, 11 JUL 2024 to 08 AUG 2024

