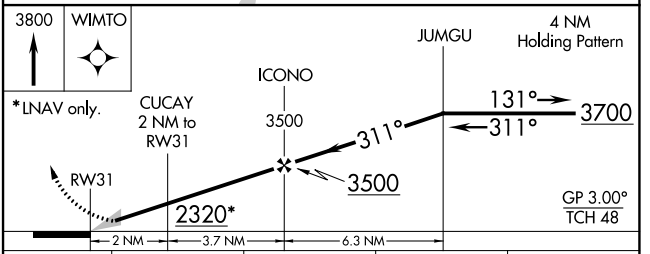
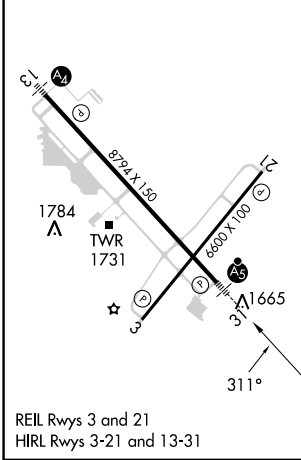
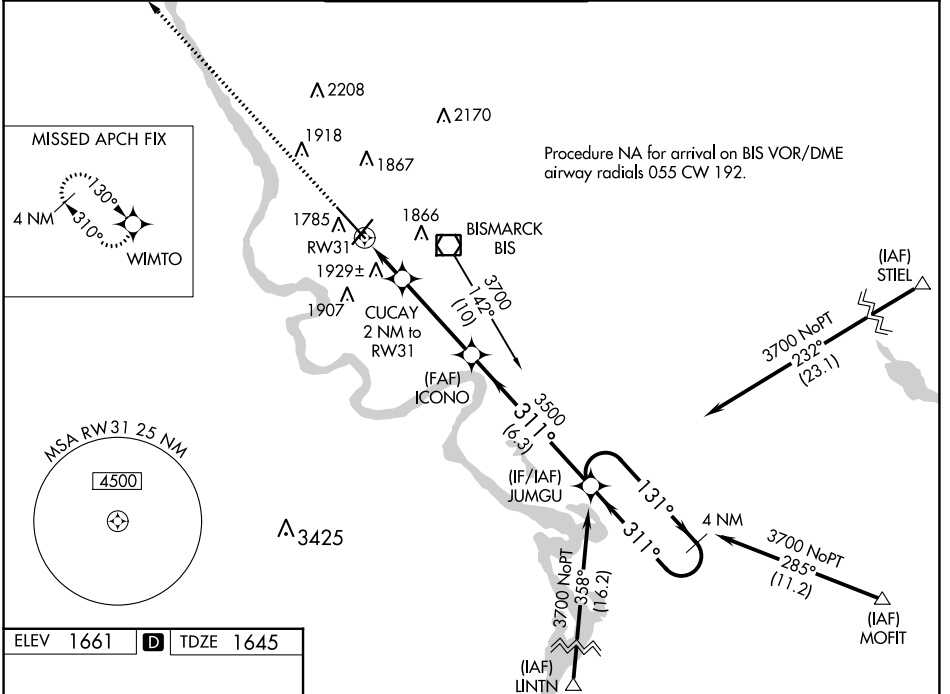


WAAS CH 56599 W31A	APP CRS 311°	Rwy Idg TDZE Apt Elev	8794 1645 1661
--	------------------------	-----------------------------	---

RNAV (GPS) RWY 31

BISMARCK MUNI (BIS)

<p>For uncompensated Baro-VNAV systems, LNAV/VNAV NA below -18°C (0°F) or above 33°C (91°F). DME/DME RNP-0.3 NA. ** RVR 1800 authorized with use of FD or AP or HUD to DA.</p>	<p>MALSR</p>	<p>MISSED APPROACH: Climb to 3800 direct WIMTO and hold.</p>		
		<p>ATIS 119.35</p>	<p>BISMARCK APP CON* 126.3 298.9</p>	<p>BISMARCK TOWER* 118.3 (CTAF) 257.8</p>



CATEGORY	A	B	C	D
LPV DA	1845/24 200 (200-½)			
LNAV/VNAV DA	2269-1¾ 624 (700-1¾)			
LNAV MDA	2180/24	535 (600-½)	2180/55	535 (600-1)
CIRCLING	2200-1	539 (600-1)	2460-2¼ 799 (800-2¼)	2460-2½ 799 (800-2½)

NC-1, 11 JUL 2024 to 08 AUG 2024

NC-1, 11 JUL 2024 to 08 AUG 2024