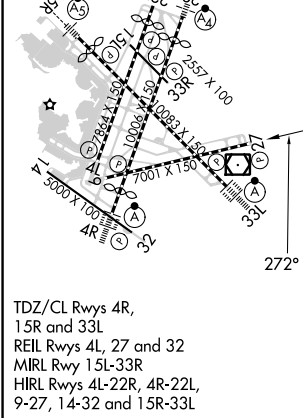
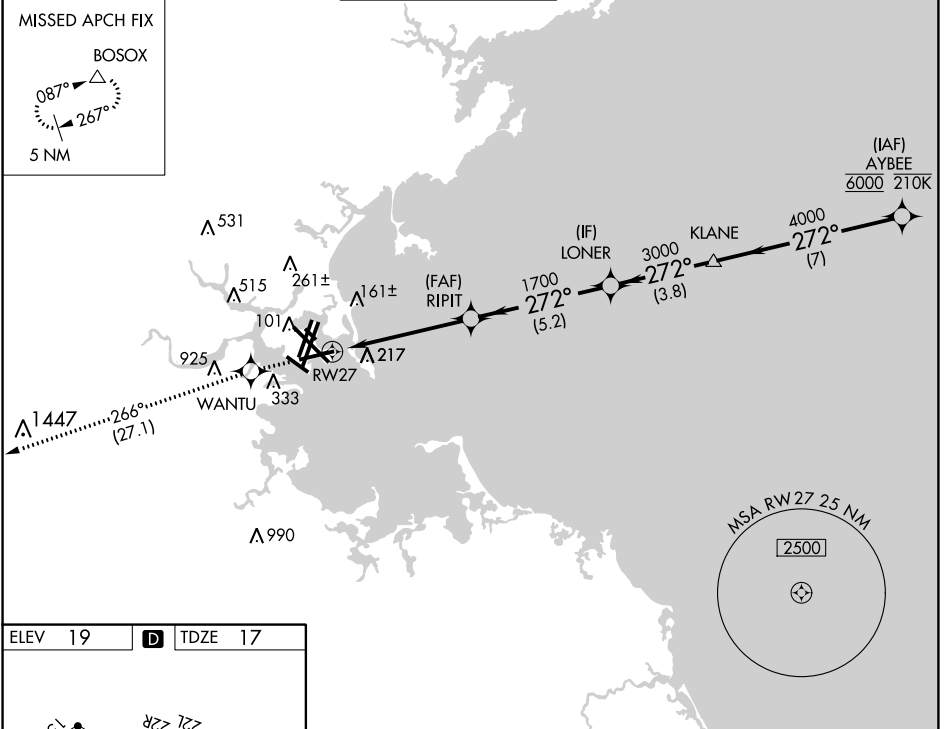


APP CRS	Rwy Idg	7001
272°	TDZE	17
	Apt Elev	19

RNAV (GPS) RWY 27

GENERAL EDWARD LAWRENCE LOGAN INTL (BOS)

RNP APCH - GPS.				MISSED APPROACH: Climb to 3000 direct WANTU and on track 266° to BOSOX and hold.		
▼ For uncompensated Baro-VNAV systems, LNAV/VNAV NA below -15°C or above 54°C.						
D-ATIS 135.0	BOSTON APP CON 120.6 263.1	BOSTON TOWER 128.8 257.8 (WEST) 132.225 257.8 (EAST)	GND CON 121.75 121.9	CLNC DEL 121.65 257.8	CPDLC	



NE-1, 11 JUL 2024 to 08 AUG 2024

NE-1, 11 JUL 2024 to 08 AUG 2024

ELEV 19	D	TDZE 17			
3000	WANTU	tr 266°	BOSOX	VGSI and RNAV glidepath not coincident (VGSI Angle 3.00/TCH 71).	
				AYBEE	6000
					GP 3.00° TCH 57
CATEGORY	A	B	C	D	
LNAV/VNAV DA	510-1 ³ / ₈ 493 (500-1 ³ / ₈)				
LNAV MDA	640-1 ¹ / ₂	623 (700-1 ¹ / ₂)	640-1 ³ / ₈	623 (700-1 ³ / ₈)	