

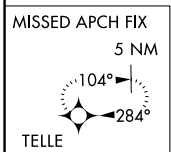
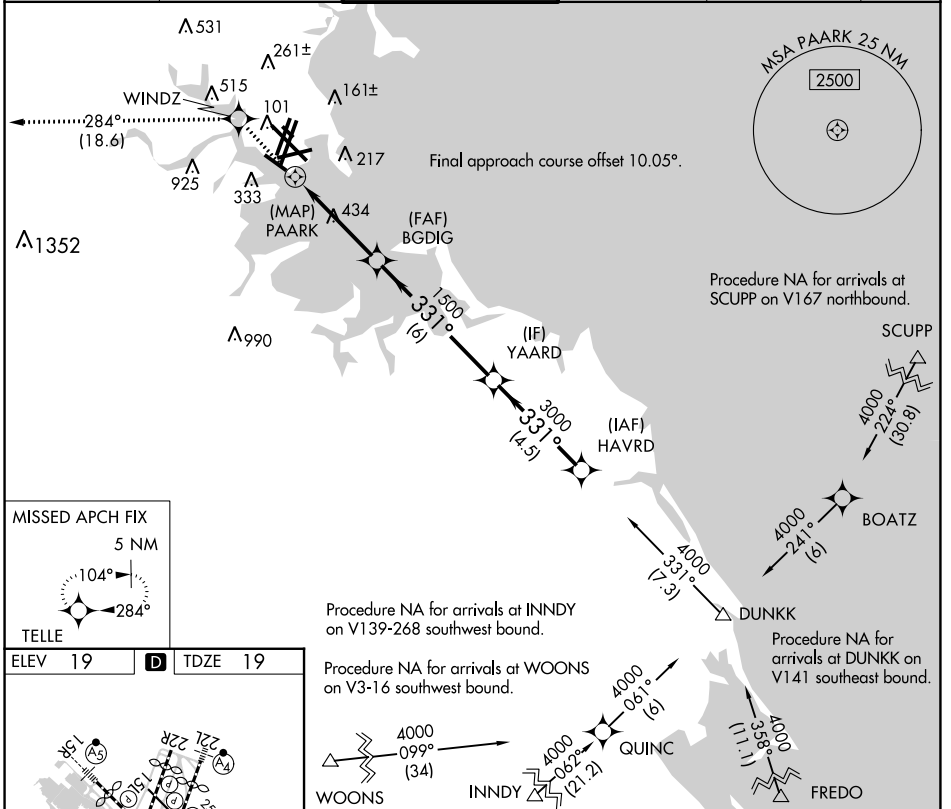
APP CRS	Rwy Idg	<b>5000</b>
<b>331°</b>	TDZE	<b>19</b>
	Apt Elev	<b>19</b>

# RNAV (GPS) RWY 32

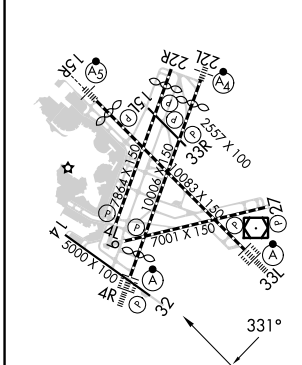
GENERAL EDWARD LAWRENCE LOGAN INTL (BOS)

RNP APCH - GPS.		BOSTON TOWER <b>128.8 257.8 (WEST)</b> <b>132.225 257.8 (EAST)</b>		GND CON <b>121.75 121.9</b>	CLNC DEL <b>121.65 257.8</b>	CPDLC
D-ATIS <b>135.0</b>	BOSTON APP CON <b>120.6 263.1</b>					

MISSED APPROACH: Climb to 3000 direct WINDZ and on track 284° to TELLE and hold.

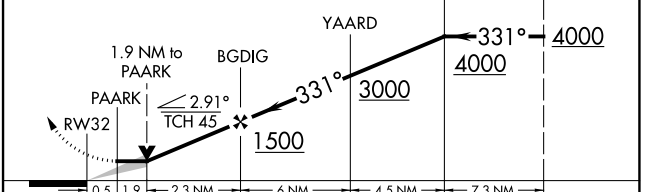


ELEV 19	<b>D</b>	TDZE 19
---------	----------	---------



TDZ/CL Rwys 4R, 15R and 33L  
REIL Rwys 4L, 27 and 32  
MIRL Rwy 15L-33R  
HIRL Rwys 4L-22R, 4R-22L, 9-27, 14-32 and 15R-33L

3000	WINDZ	tr 284°	TELLE
------	-------	---------	-------



CATEGORY	A	B	C	D
LNAV MDA	820-1 801 (900-1)	820-1¼ 801 (900-1¼)	820-2½	801 (900-2½)

NE-1, 11 JUL 2024 to 08 AUG 2024

NE-1, 11 JUL 2024 to 08 AUG 2024