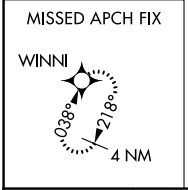
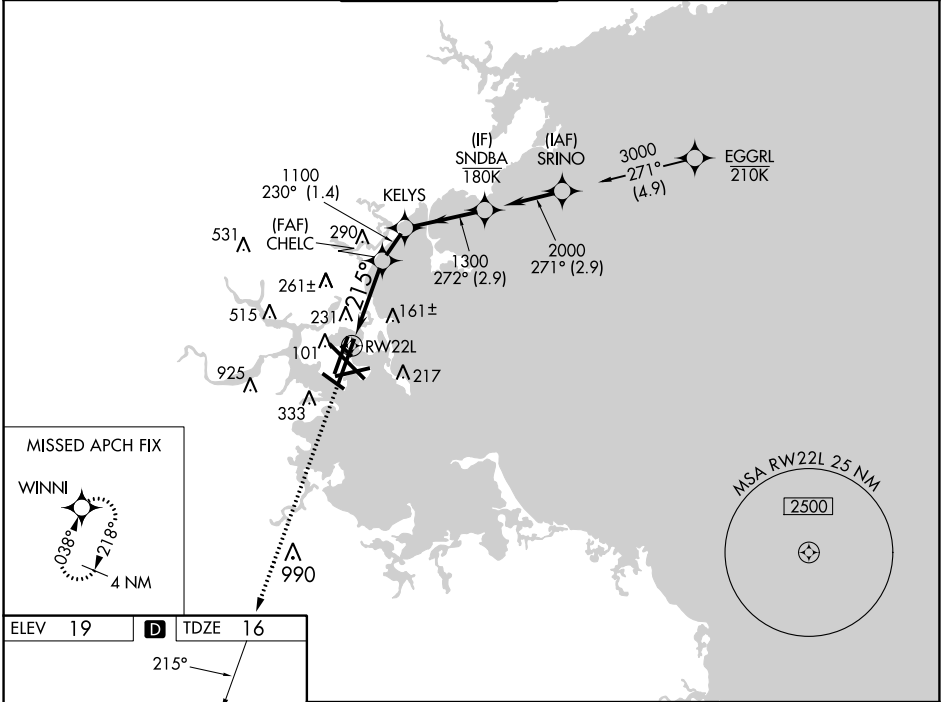


WAAS CH 77645 W22B	APP CRS 215°	Rwy Idg TDZE Apt Elev	8806 16 19
--	------------------------	-----------------------------	---------------------------------------

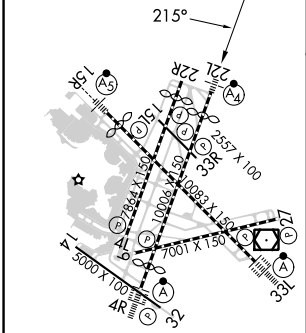
RNAV (GPS) Y RWY 22L

GENERAL EDWARD LAWRENCE LOGAN INTL (BOS)

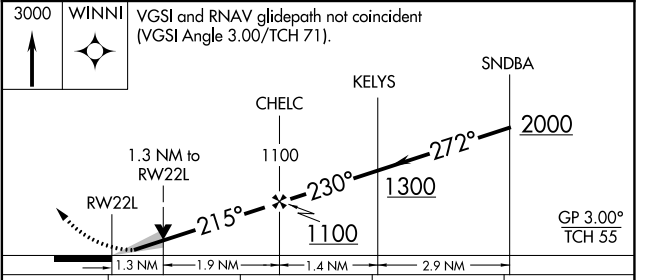
RNP APCH - GPS.		BOSTON TOWER		GND CON		CLNC DEL		CPDLC	
<p>▼ For uncompensated Baro-VNAV systems, LNAV/VNAV NA below -14°C or above 54°C. Inop table does not apply to LPV all Cats.</p>		<p>128.8 257.8 (WEST) 132.225 257.8 (EAST)</p>		<p>121.75 121.9</p>		<p>121.65 257.8</p>			
D-ATIS	BOSTON APP CON								
135.0	120.6 263.1								



ELEV 19	D	TDZE 16
---------	----------	---------



TDZ/CL Rws 4R, 15R and 33L
REIL Rws 4L, 27 and 32
MIRL Rwy 15L-33R
HIRL Rws 4L-22R, 4R-22L, 9-27, 14-32 and 15R-33L



CATEGORY	A	B	C	D
LPV DA		216/40	200 (200-¾)	
LNAV/VNAV DA		408/45	392 (400-⅞)	
LNAV MDA	500/40	484 (500-¾)	500/60	484 (500-1¼)

NE-1, 11 JUL 2024 to 08 AUG 2024

NE-1, 11 JUL 2024 to 08 AUG 2024