

RNAV (GPS) RWY 3

CINCINNATI MUNI/LUNKEN FLD (LUK)

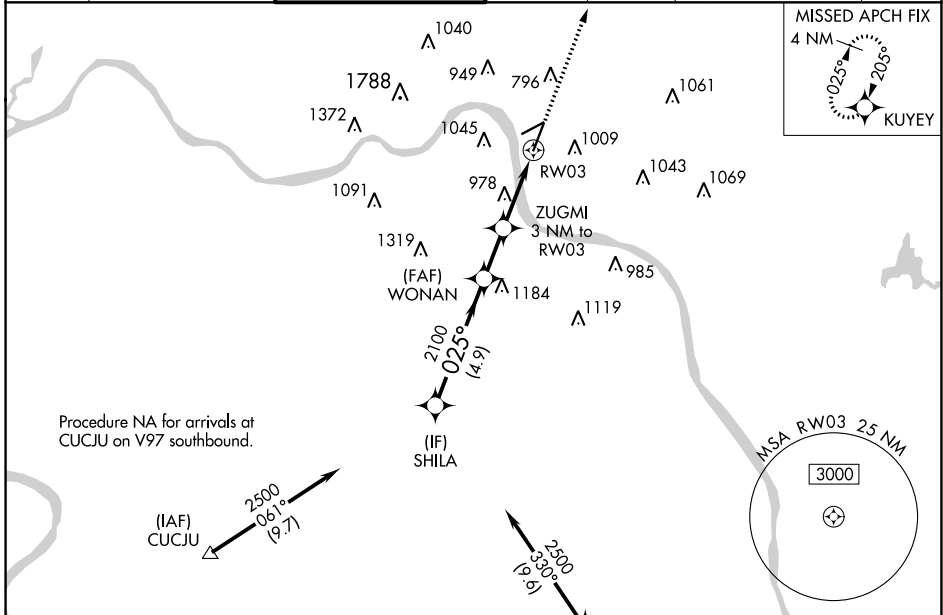
APP CRS	Rwy Idg	6101
025°	TDZE	481
	Apt Elev	482

RNP APCH-GPS.

▽
▲ Rwy 3 helicopter visibility reduction below $\frac{3}{4}$ SM NA.
Circling NA for Cat D north of Rwy 7-25. Circling Rwy 7 NA at night.

MISSED APPROACH: Climb to 2600 direct KUYEY and hold.

ATIS	CINCINNATI APP CON	LUNKEN TOWER ★	GND CON	CLNC DEL	CLNC DEL	UNICOM
123.6	121.0 254.25	118.7 (CTAF) 257.8	121.9	121.9	124.9 (When twr closed)	122.95



Procedure NA for arrivals at CUCJU on V97 southbound.

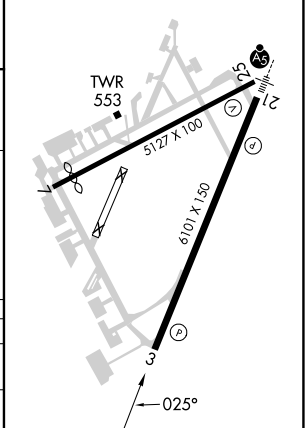
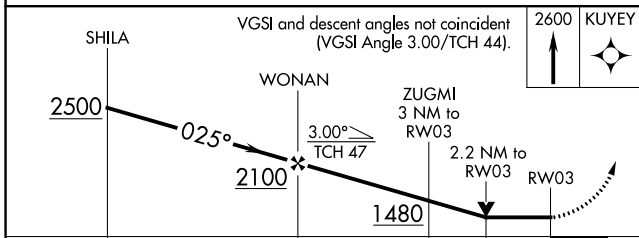
(IAF) CUCJU 2500 061° (9.7)

Procedure NA for arrivals at FLM VOR/DME on V517 southeast bound.

(IAF) LODLL 2700 345° (1.0)

FALMOUTH FLM

ELEV	482	D	TDZE	481
REIL Rwy 3				
HIRL Rwy 3-21				
MIRL Rwy 7-25				



	VGSI and descent angles not coincident (VGSI Angle 3.00/TCH 44).		2600	KUYEY
CATEGORY	A	B	C	D
LNVA MDA	1240-1 759 (800-1)	1240-1¼ 759 (800-1¼)	1240-2	759 (800-2)
CIRCLING	1260-1 778 (800-1)	1360-1¼ 878 (900-1¼)	1360-2½ 878 (900-2½)	1400-3 918 (1000-3)

EC-2, 11 JUL 2024 to 08 AUG 2024

EC-2, 11 JUL 2024 to 08 AUG 2024