

LOC/DME I-LIZ <b>111.55</b> Chan <b>52 (Y)</b>	APP CRS <b>058°</b>	Rwy Idg <b>9000</b> TDZE <b>773</b> Apt Elev <b>799</b>
--	------------------------	---

# ILS RWY 6L (CAT II & III)

CLEVELAND-HOPKINS INTL (CLE)

From GROHL, HICKR, and KWENE: RNAV 1-DME/DME/IRU or GPS required for procedure entry. Aircraft not DME/DME/IRU or GPS equipped - RADAR required for procedure entry. RNAV 1.

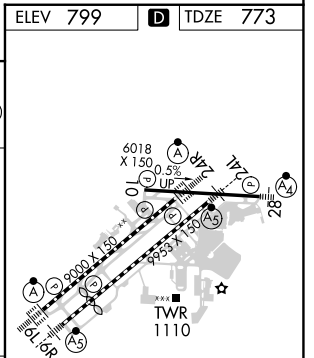
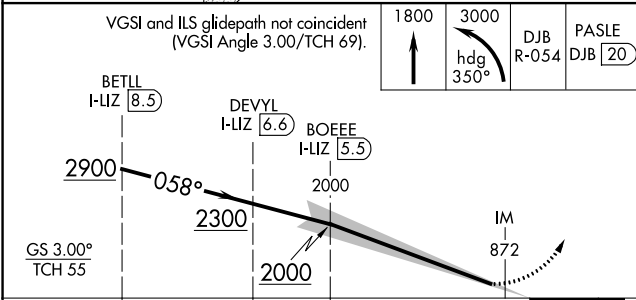
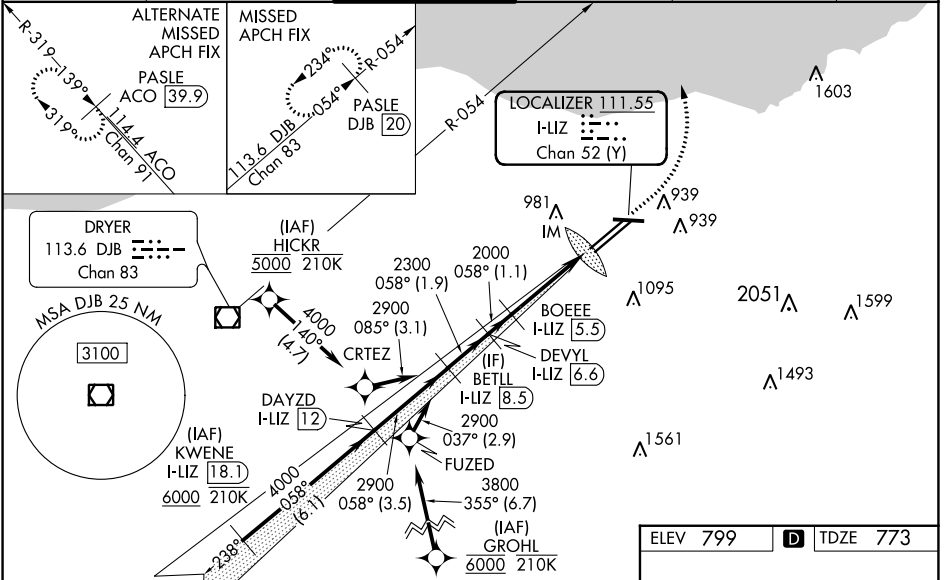
DME required.

Simultaneous approach authorized.  
Simultaneous operations require use of vertical guidance;  
maintain last assigned altitude until established on glideslope.

ALS-F-2

MISSED APPROACH: Climb to 1800 then climbing left turn to 3000 on heading 350° and DJB VOR/DME R-054 to PASLE/DJB 20 DME and hold.

D-ATIS ARR <b>127.85</b> DEP <b>132.375</b>	CLEVELAND APP CON <b>126.55 346.325</b>	CLEVELAND TOWER <b>124.5 273.45</b>	GND CON <b>121.7 273.45</b>	CLNC DEL <b>125.05 273.45</b>	CPDLC
---	--	--	--------------------------------	----------------------------------	-------



CATEGORY	A	B	C	D
S-ILS 6L	CAT II RA 111/12		100 DA 873	
S-ILS 6L	CAT III RVR 06			

## CATEGORY II & III ILS - SPECIAL AIRCREW & AIRCRAFT CERTIFICATION REQUIRED

REIL Rwy 10  
TDZ/CL Rwy 6L, 6R, 24L, and 24R  
HIRL Rwy 6L-24R, 6R-24L and 10-28

EC-2, 11 JUL 2024 to 08 AUG 2024

EC-2, 11 JUL 2024 to 08 AUG 2024