

APP CRS	Rwy Idg	<b>9000</b>
<b>058°</b>	TDZE	<b>773</b>
	Apt Elev	<b>799</b>

# RNAV (RNP) Z RWY 6L

CLEVELAND-HOPKINS INTL (CLE)

RNP AR APCH.

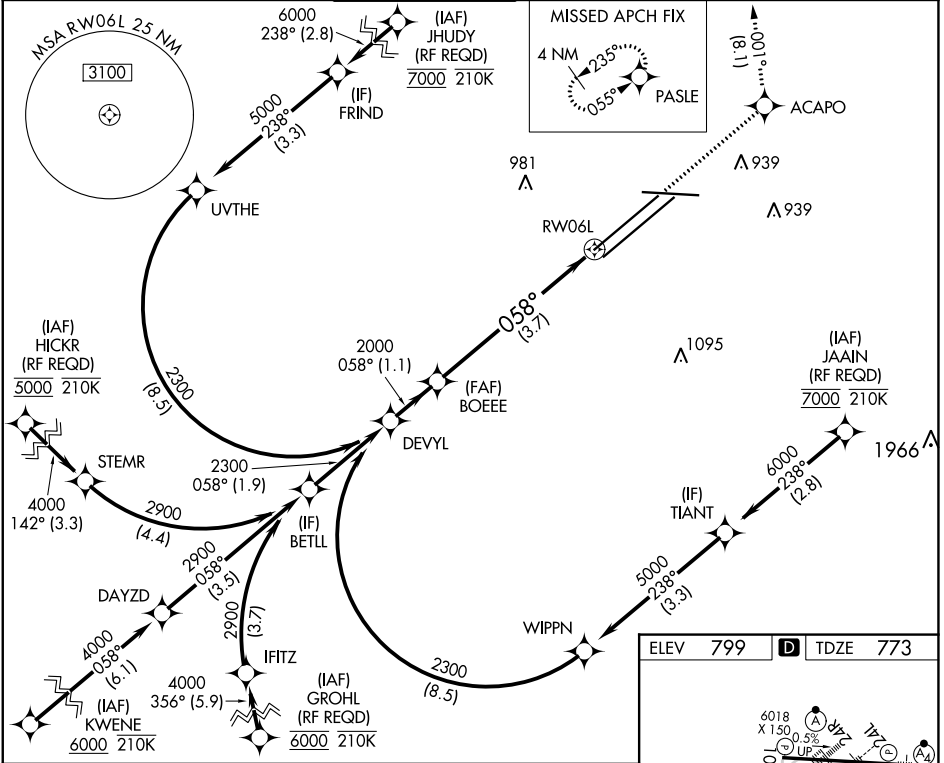
For uncompensated Baro-VNAV systems, procedure NA below -18°C (0°F) or above 54°C (130°F). For inop ALS, increase RNP 0.17 all Cats visibility to RVR 5500 and RNP 0.30 all Cats visibility to RVR 6000.

ALSF-2



MISSED APPROACH: Climb to 3000 direct ACAPO and on track 001° to PASLE and hold.

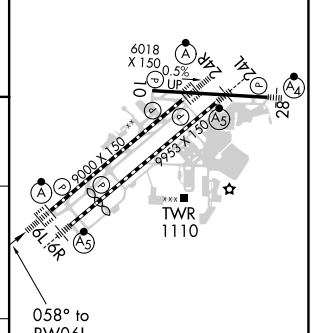
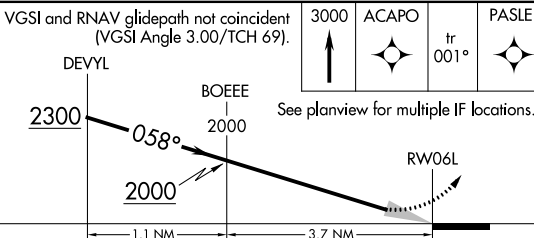
D-ATIS	CLEVELAND APP CON	CLEVELAND TOWER	GND CON	CLNC DEL	CPDLC
ARR <b>127.85</b>	<b>126.55 346.325</b>	<b>124.5 273.45</b>	<b>121.7 273.45</b>	<b>125.05 273.45</b>	
DEP <b>132.375</b>					



EC-2, 11 JUL 2024 to 08 AUG 2024

EC-2, 11 JUL 2024 to 08 AUG 2024

ELEV	799	TDZE	773
------	-----	------	-----



CATEGORY	A	B	C	D
RNP 0.17 DA		1123/30	350 (400-5%)	
RNP 0.30 DA		1176/40	403 (400-3/4)	

**AUTHORIZATION REQUIRED**

REIL Rwy 10  
 TDZ/CL Rwy 6L, 6R, 24L, and 24R  
 HIRL Rwy 6L-24R, 6R-24L and 10-28