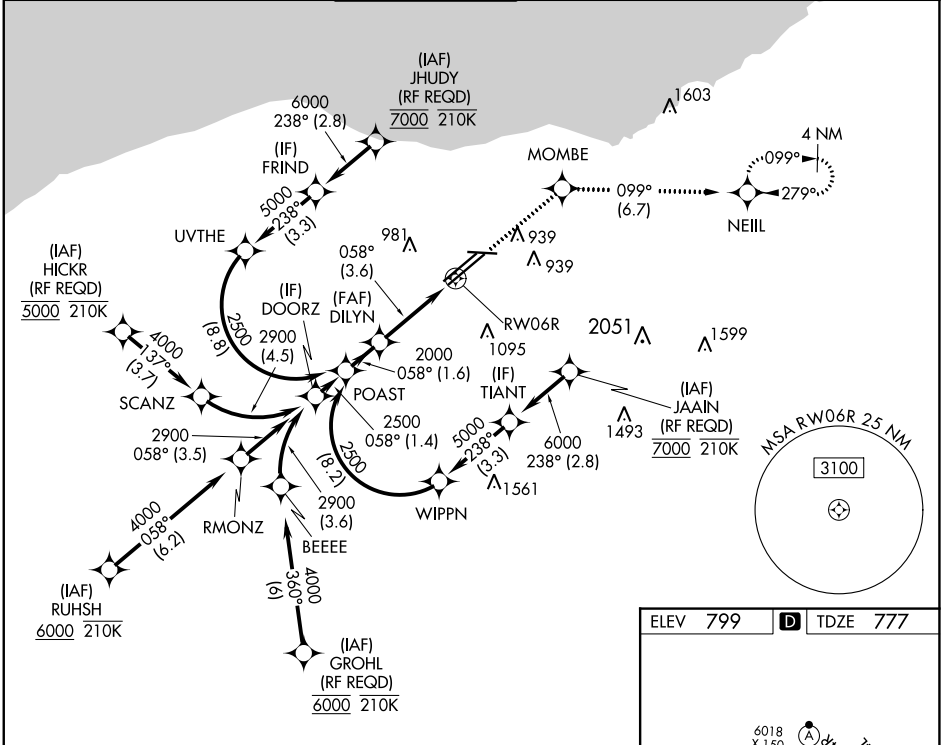


APP CRS	Rwy Idg	8029
058°	TDZE	777
	Apt Elev	799

RNAV (RNP) Z RWY 6R

CLEVELAND-HOPKINS INTL (CLE)

RNP AR APCH.			MALSR		MISSED APPROACH: Climb to 3000 direct MOMBE and on track 099° to NEILL and hold. *Missed approach requires minimum climb of 270 feet per NM to 1400.
▼ For unconsented Baro-VNAV systems, procedure NA below -18°C (0°F) or above 46°C (114°F). For inop ALS, increase RNP 0.15 all Cots visibility to RVR 5500.					
D-ATIS	CLEVELAND APP CON	CLEVELAND TOWER	GND CON	CLNC DEL	CPDLC
ARR 127.85 DEP 132.375	126.55 346.325	124.5 273.45	121.7 273.45	125.05 273.45	

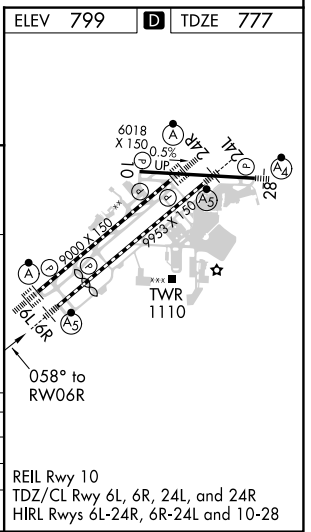


EC-2, 11 JUL 2024 to 08 AUG 2024

EC-2, 11 JUL 2024 to 08 AUG 2024

See planview for multiple IF locations.

POAST	DILYN	3000	MOMBE	tr	NEILL
2500	2000	↑	✧	099°	✧
GP 3.10°					
TCH 58					
	1.6 NM		3.6 NM		
CATEGORY	A	B	C	D	
RNP 0.15 DA*		1127/30	350 (400- ² / ₃)		
RNP 0.30 DA		1229/45	452 (500- ² / ₃)		



AUTHORIZATION REQUIRED