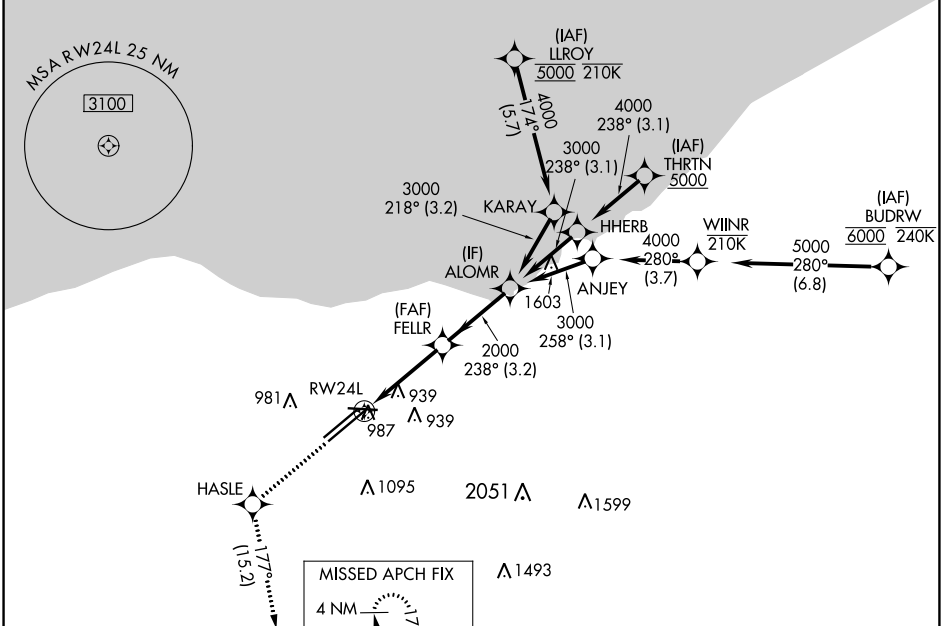


WAAS CH <b>77506</b> <b>W24B</b>	APP CRS <b>238°</b>	Rwy Idg TDZE <b>786</b> Apt Elev <b>799</b>	<b>9953</b>
--	------------------------	---	-------------

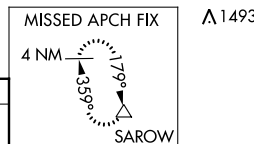
# RNAV (GPS) Y RWY 24L

CLEVELAND-HOPKINS INTL (CLE)

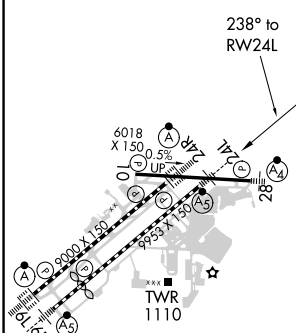
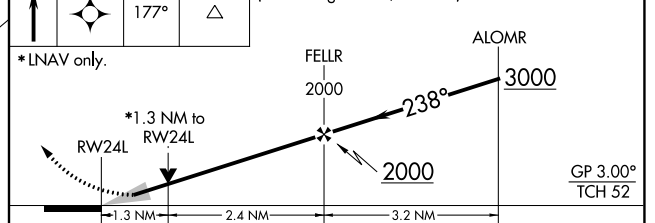
RNP APCH. ▼ Circling Rwy 10 NA at night. For uncompensated Baro-VNAV systems, LNAV/VNAV NA below -1°C or above 54°C.		MALS R ☼	MISSED APPROACH: Climb to 3000 direct HASLE and on track 177° to SAROW and hold.		
D-ATIS ARR <b>127.85</b> DEP <b>132.375</b>	CLEVELAND APP CON <b>126.55 346.325</b>	CLEVELAND TOWER <b>124.5 273.45</b>	GND CON <b>121.7 273.45</b>	CLNC DEL <b>125.05 273.45</b>	CPDLC



ELEV 799	<b>D</b>	TDZE 786
----------	----------	----------



3000 HASLE SAROW VGS1 and RNAV glidepath not coincident (VGS1 Angle 3.00/TCH 48).



CATEGORY	A	B	C	D
LPV DA	986/18 200 (200-½)			
LNAV/VNAV DA	1180/35 394 (400-⅝)			
LNAV MDA	1240/24 454 (500-½)	1240/45 454 (500-⅞)		
<b>C</b> CIRCLING	1420-1 621 (700-1)	1420-1¾ 621 (700-1¾)	1420-2 621 (700-2)	

REIL Rwy 10  
TDZ/CL Rwy 6L, 6R, 24L and 24R  
HIRL Rwsy 6L-24R, 6R-24L and 10-28

EC-2, 11 JUL 2024 to 08 AUG 2024

EC-2, 11 JUL 2024 to 08 AUG 2024