

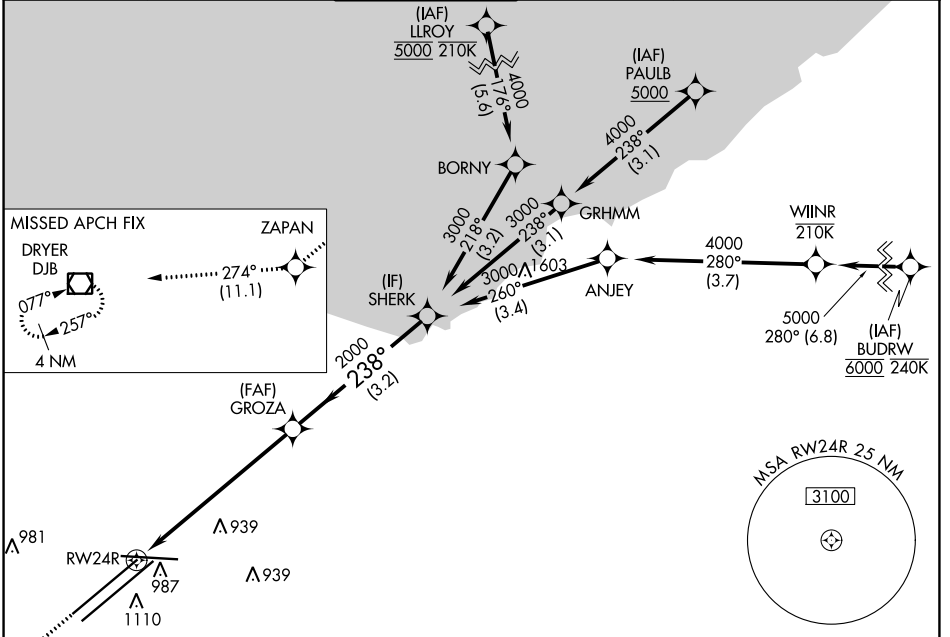
WAAS CH 60904 W24A	APP CRS 238°	Rwy Idg TDZE 780 Apt Elev 799	9000 780 799
--	------------------------	---	---

RNAV (GPS) Y RWY 24R

CLEVELAND-HOPKINS INTL (CLE)

RNP APCH.	ALSF-2	MISSED APPROACH: Climb to 3000 direct ZAPAN and on track 274° to DJB VOR/DME and hold.
Circling Rwy 10 NA at night. For uncompensated Baro-VNAV systems, LNAV/VNAV NA below -19°C or above 54°C.		

D-ATIS ARR 127.85 DEP 132.375	CLEVELAND APP CON 126.55 346.325	CLEVELAND TOWER 124.5 273.45	GND CON 121.7 273.45	CLNC DEL 125.05 273.45	CPDLC
---	--	--	--------------------------------	----------------------------------	-------

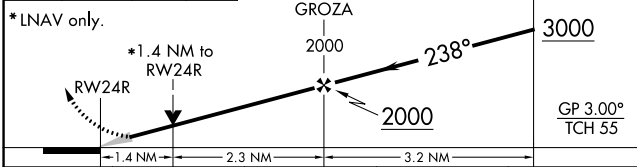


EC-2, 11 JUL 2024 to 08 AUG 2024

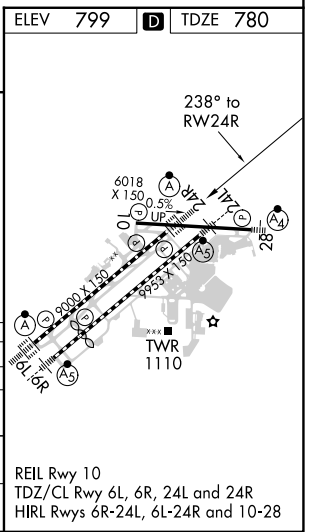
EC-2, 11 JUL 2024 to 08 AUG 2024

ELEV 799	D TDZE 780
----------	-------------------

3000	ZAPAN	tr 274°	DJB	VGSI and RNAV glidepath not coincident (VGSI Angle 3.00/TCH 65).
------	-------	---------	-----	--



CATEGORY	A	B	C	D
LPV DA		980/18	200 (200-½)	
LNAV/VNAV DA		1168/35	388 (400-⅝)	
LNAV MDA	1240/24	460 (500-½)	1240/45	460 (500-⅝)
C CIRCLING	1420-1	621 (700-1)	1420-1¾	621 (700-¾)
			1420-2	621 (700-2)



REIL Rwy 10
TDZ/CL Rwy 6L, 6R, 24L and 24R
HIRL Rwy 6R-24L, 6L-24R and 10-28