

HI-TACAN X RWY 13R

TACAN NGP Chan 87	APCH CRS 147°	Rwy Ildg TDZE 8001 13 Arpt Elev 18
-----------------------------	-------------------------	--

[USN]

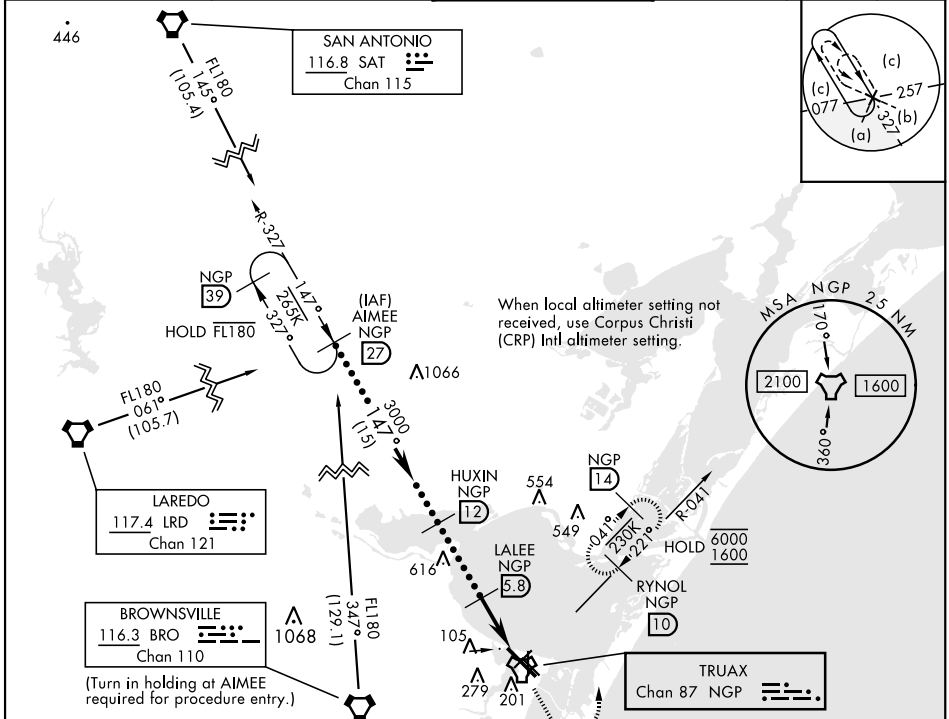
CORPUS CHRISTI NAS (TRUAX FLD) (KNGP)

⚠ * When ALS inop, increase vis to 1½ miles.

SALSF **A2**

MISSED APPROACH: Climb to 1600 direct NGP TACAN and turn left to intercept R-041 to RYNOL and hold.

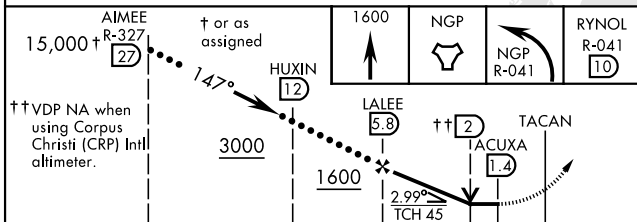
ATIS ★ 127.9 290.9	APP CON 120.9 348.725	NAVY CORPUS TOWER ★ 134.85 0 340.2	GND CON 118.7 257.85	CLNC DEL 314.3	ASR/PAR
------------------------------	---------------------------------	--	--------------------------------	--------------------------	---------



SC-3, 11 JUL 2024 to 08 AUG 2024

SC-3, 11 JUL 2024 to 08 AUG 2024

EMERG SAFE ALT 100 NM 11,100



CATEGORY	C	D	E
S-13R*	400-7/8	387 (400-7/8)	
C CIRCLING	520-1½ 502 (600-1½)	580-2	562 (600-2)
CORPUS CHRISTI (CRP) INTL ALTIMETER SETTING			
S-13R*	420-1	407 (500-1)	
C CIRCLING	540-1½ 522 (600-1½)	620-2 602 (700-2)	620-2¼ 602 (700-2¼)

ELEV 18	TDZE 13
---------	---------

The map shows the layout of Corpus Christi NAS (Truax Field). Runways 4-22, 13R-31L, 13L-31R, and 18-36 are depicted. Taxiways 36, 31L, and 31R are also shown. The tower (TWR) is located near the intersection of runways 13R and 31L. The diagram includes various symbols for navigation aids and holding points.

HI-TACAN X RWY 13R