

CORPUS CHRISTI, TEXAS

# ILS Y or RNAV (GPS) RWY 13R

[USN]

CORPUS CHRISTI NAS (TRUAX FLD) (KNGP)

LOC I-NGP <b>111.3</b>	APCH CRS <b>132°</b>	Rwy Idg <b>8001</b>
		TDZE <b>13</b>
		Arprt Elev <b>18</b>

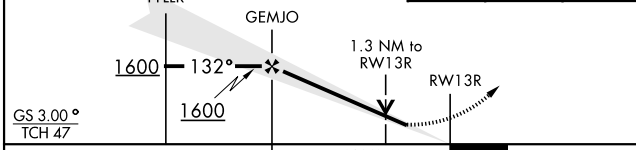
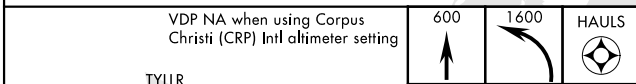
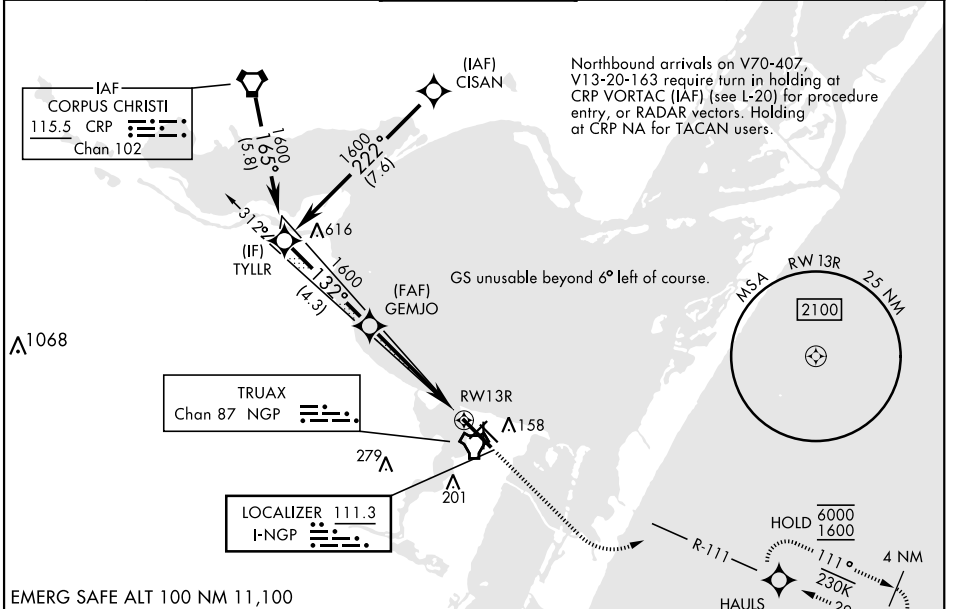
RNP APCH for LNAV.  
RNAV1 - GPS for ILS.

▼\*When ALS inop, increase CAT AB vis to 1 mile; CAT CD vis to 1½ miles. When local altimeter setting not received, use Corpus Christi (CRP) Intl altimeter setting.

SALSF

MISSED APPROACH: Climb to 600, then climbing left turn to 1600 direct HAULS and hold.

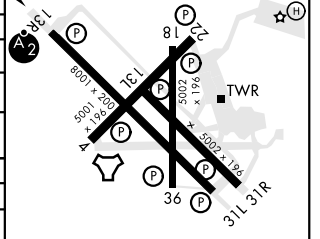
ATIS★ <b>127.9 290.9</b>	APP CON <b>128.675 343.75</b>	NAVY CORPUS TOWER★ <b>134.85 340.2</b>	GND CON <b>118.7 257.85</b>	CLNC DEL <b>314.3</b>	ASR/ PAR
-----------------------------	----------------------------------	---	--------------------------------	--------------------------	-------------



CATEGORY	A	B	C	D
S-ILS 13R	213-¾	200	(200-¾)	
LNAV MDA*	460-¾ 447 (500-¾)	460-1 447 (500-1)		
<b>C</b> CIRCLING	460-1 442 (500-1)	480-1 462 (500-1)	520-1½ 502 (600-1½)	580-2 562 (600-2)
CORPUS CHRISTI (CRP) INTL ALTIMETER SETTING				
S-ILS 13R	246-¾	233	(300-¾)	
LNAV MDA*	500-¾ 487 (500-¾)	500-1½ 487 (500-1½)		
<b>C</b> CIRCLING	500-1 482 (500-1)	540-1½ 522 (600-1½)	620-2 602 (700-2)	



ELEV 18	TDZE 13
---------	---------



HIRL Rwy 4-22, 13R-31L  
HIRL Rwy 13L-31R, 18-36  
REIL Rwy 4-22, 13L-31R, 18-36, 31L

CORPUS CHRISTI, TEXAS  
Orig 30NOV23

27°42'N-97°17'W

CORPUS CHRISTI NAS (TRUAX FLD) (KNGP)

# ILS Y or RNAV (GPS) RWY 13R

SC-3, 11 JUL 2024 to 08 AUG 2024

SC-3, 11 JUL 2024 to 08 AUG 2024