

# ILS Z or LOC Z RWY 13R

CORPUS CHRISTI NAS (TRUAX FLD) (KNGP)

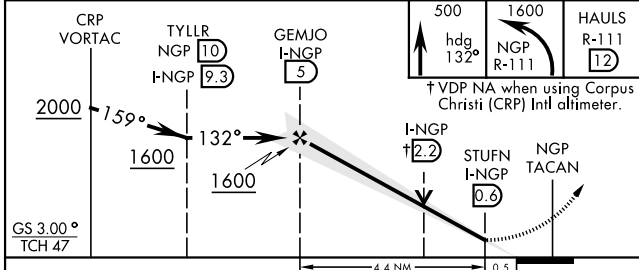
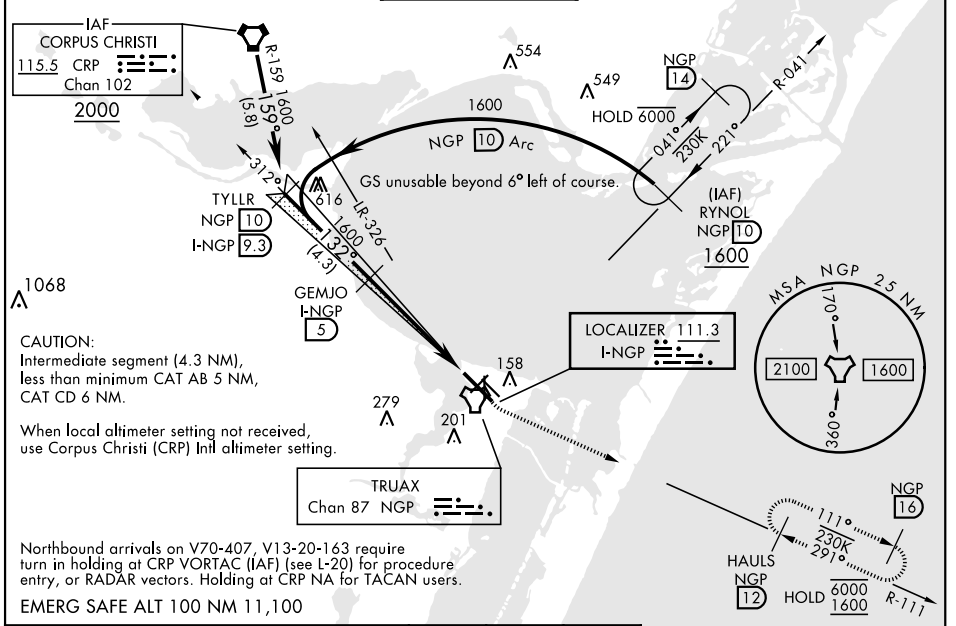
LOC I-NGP <b>111.3</b>	APCH CRS <b>132°</b>	Rwy Idg 8001	TDZE 13	Arpt Elev 18
---------------------------	-------------------------	-----------------	------------	-----------------

[USN]

DME required  
 ▼ \*When ALS inop, increase CAT AB vis to 1 mile, CAT CD to 1/3 miles.

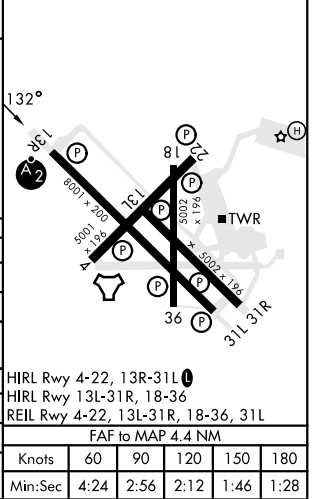
SALSF MISSED APPROACH: Climb to 500 hdg 132°, then climbing left turn to 1600 and intercept NGP TACAN R-111 to HAULS and hold.

ATIS★ <b>127.9 290.9</b>	APP CON <b>128.675 343.75</b>	NAVY CORPUS TOWER★ <b>134.85 340.2</b>	GND CON <b>118.7 257.85</b>	CLNC DEL <b>314.3</b>	ASR/PAR
-----------------------------	----------------------------------	---	--------------------------------	--------------------------	---------



ELEV 18	TDZE 13
---------	---------

CATEGORY	A	B	C	D
S-ILS 13R	213-3/4		200	(200-3/4)
S-LOC 13R*	460-3/4	447 (500-3/4)	460-1	447 (500-1)
<b>C</b> CIRCLING	460-1	480-1	520-1/2	580-2
	442 (500-1)	462 (500-1)	502 (600-1/2)	562 (600-2)
CORPUS CHRISTI (CRP) INTL ALTIMETER SETTING				
S-ILS 13R	246-3/4		233	(300-3/4)
S-LOC 13R*	500-3/4	487 (500-3/4)	500-1/2	487 (500-1/2)
<b>C</b> CIRCLING	500-1	482 (500-1)	540-1/2	620-2
			522 (600-1/2)	602 (700-2)



# ILS Z or LOC Z RWY 13R

SC-3, 11 JUL 2024 to 08 AUG 2024

SC-3, 11 JUL 2024 to 08 AUG 2024