

CORPUS CHRISTI, TEXAS

RNAV (GPS) RWY 13L

CORPUS CHRISTI NAS (TRUAX FLD) (KNGP)

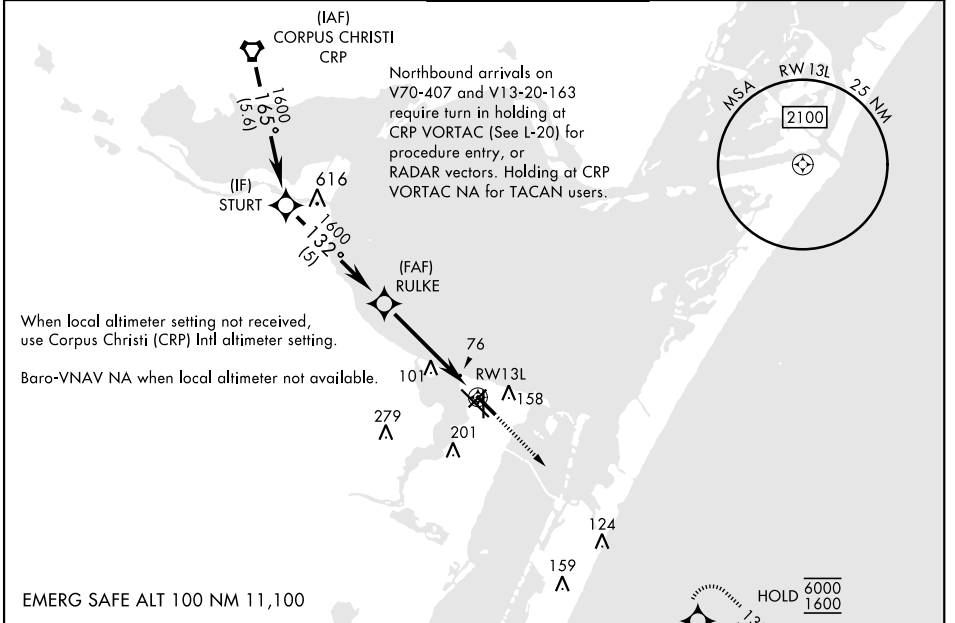
[USN]

APCH CRS	Rwy Idg	5002
132°	TDZE	18
	Arpt Elev	18

RNP APCH
 ▼ For uncompensated Baro-VNAV systems, LNAV/VNAV NA below -15° C (5° F) or above 54° C (129° F).

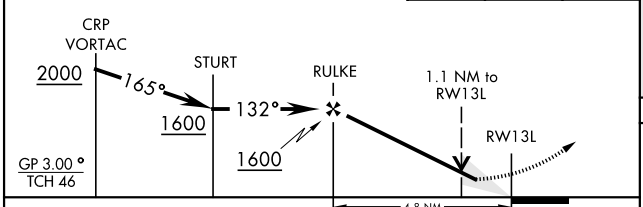
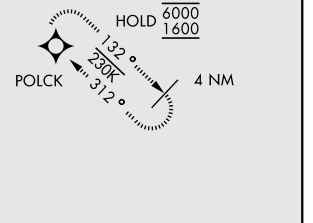
MISSED APPROACH: Climb to 600, then climbing right turn to 1600 direct POLCK and hold.

ATIS ★ 127.9 290.9	APP CON 128.675 343.75	NAVY CORPUS TOWER ★ 134.85 340.2	GND CON 118.7 257.85	CLNC DEL 314.3	ASR/ PAR
-----------------------	---------------------------	-------------------------------------	-------------------------	-------------------	-------------

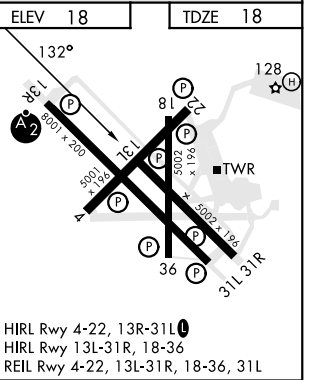


VDP NA when using Corpus Christi (CRP) Intl altimeter setting.

600	1600	POLCK



CATEGORY	A	B	C	D
LNAV/VNAV DA	268-1		250	(300-1)
LNAV MDA	400-1	382 (400-1)	400-1½	382 (400-1½)
CIRCLING	460-1	480-1	520-1½	580-2
	442 (500-1)	462 (500-1)	502 (600-1½)	562 (600-2)
CORPUS CHRISTI (CRP) INTL ALTIMETER SETTING				
LNAV MDA	420-1	402 (500-1)	420-1½	402 (500-1½)
CIRCLING	500-1	482 (500-1)	540-1½	620-2
			522 (600-1½)	602 (700-2)



CORPUS CHRISTI, TEXAS 27°42'N-97°17'W CORPUS CHRISTI NAS (TRUAX FLD) (KNGP)

Amdt 2 30NOV23

RNAV (GPS) RWY 13L

SC-3, 11 JUL 2024 to 08 AUG 2024

SC-3, 11 JUL 2024 to 08 AUG 2024