

CORPUS CHRISTI, TEXAS

# RNAV (GPS) RWY 22

[USN] CORPUS CHRISTI NAS (TRUAX FLD) (KNGP)

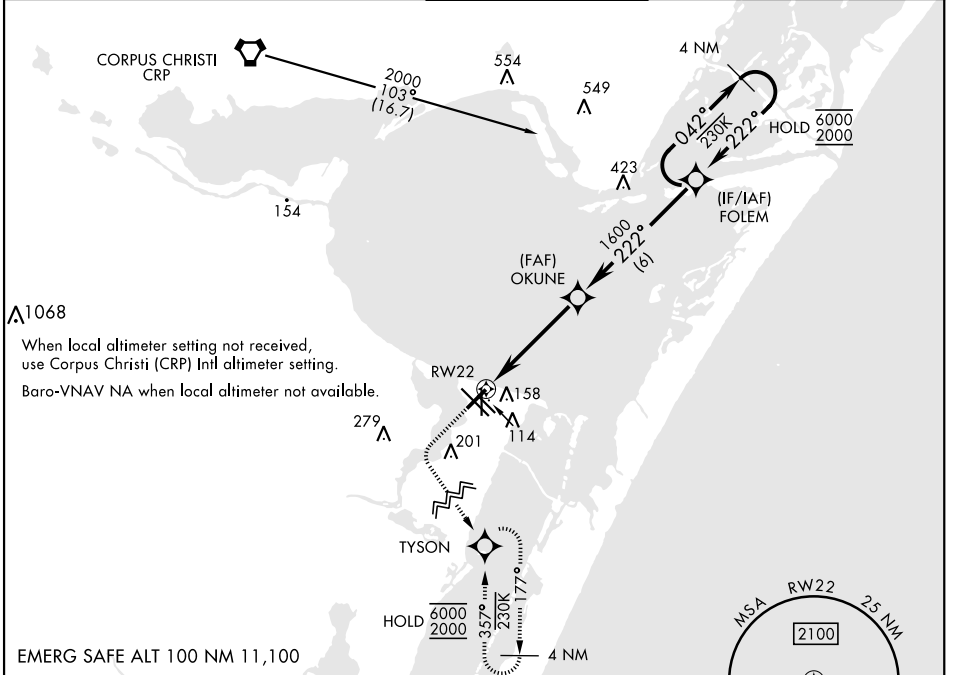
APCH CRS	Rwy Idg	5001
222°	TDZE	15
	Arprt Elev	18

RNP APCH

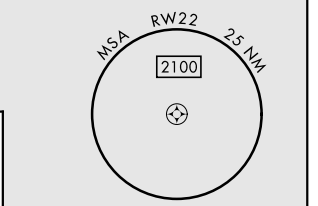
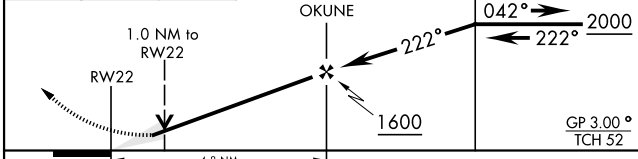
For uncompensated Baro-VNAV systems, LNAV/VNAV NA below -15°C (5°F) or above 54°C (129°F).

MISSED APPROACH: Climb to 600, then climbing left turn to 2000 direct TYSON and hold.

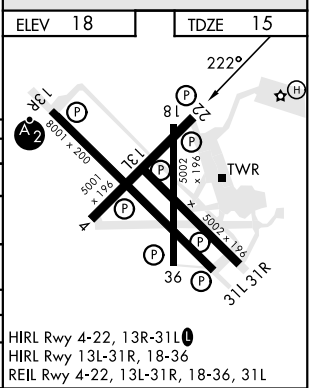
ATIS ★ 127.9 290.9	APP CON 128.675 343.75	NAVY CORPUS TOWER ★ 134.85 340.2	GND CON 118.7 257.85	CLNC DEL 314.3	ASR/ PAR
-----------------------	---------------------------	-------------------------------------	-------------------------	-------------------	-------------



600	2000	TYSON	VDP NA when using Corpus Christi (CRP) Intl altimeter setting.
			4 NM Holding Pattern



CATEGORY	A	B	C	D
LNAV MDA	380-1		365 (400-1)	
LNAV/VNAV DA	320-7/8 305 (400-7/8)			380-1 365 (400-1)
CIRCLING	460-1 422 (500-1)	480-1 462 (500-1)	520-1 1/2 502 (600-1 1/2)	580-2 562 (600-2)
	CORPUS CHRISTI (CRP) INTL ALTIMETER SETTING			
LNAV MDA	400-1	385 (400-1)	400-1 1/8 385 (400-1 1/8)	
CIRCLING	500-1	482 (500-1)	540-1 1/2 522 (600-1 1/2)	620-2 602 (700-2)



CORPUS CHRISTI, TEXAS  
Amdt 2 30NOV23

27°42'N-97°17'W

CORPUS CHRISTI NAS (TRUAX FLD) (KNGP)

# RNAV (GPS) RWY 22

SC-3, 11 JUL 2024 to 08 AUG 2024

SC-3, 11 JUL 2024 to 08 AUG 2024