

CORPUS CHRISTI, TEXAS

RNAV (GPS) RWY 31R

CORPUS CHRISTI NAS (TRUAX FLD) (KNGP)

[USN]

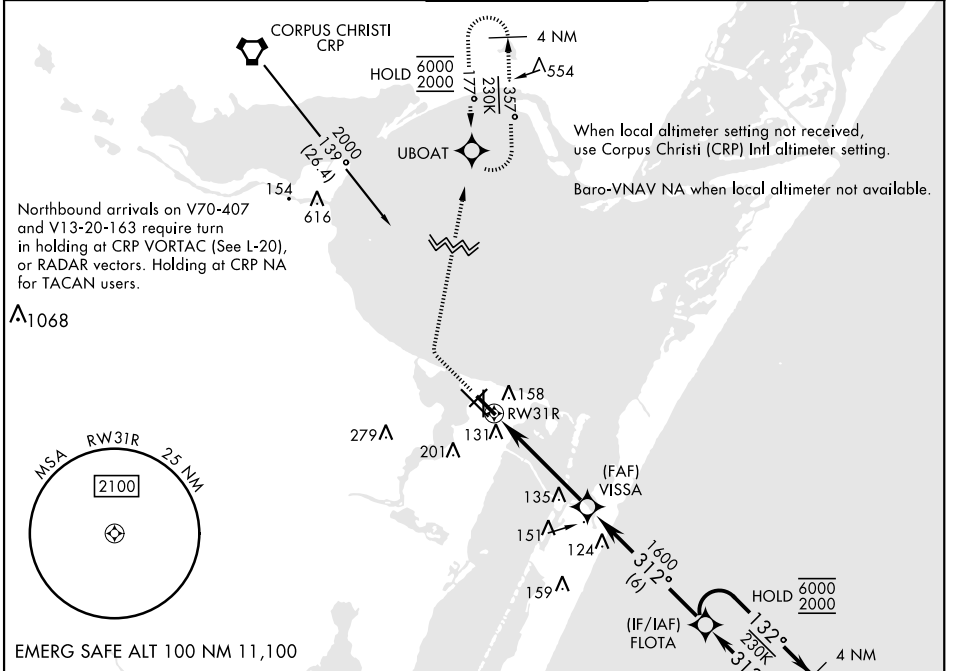
APCH CRS	Rwy ldg	5002
312°	TDZE	18
	Arprt Elev	18

RNP APCH

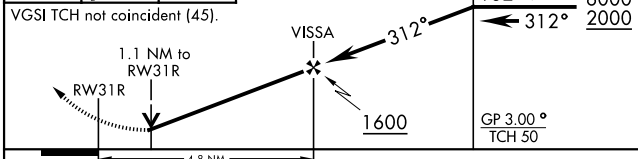
MISSED APPROACH: Climb to 600, then climbing right turn to 2000 direct UBOAT and hold.

▼ For uncompensated Baro-VNAV systems, LNAV/VNAV NA below -15°C (5° F) or above 54°C (129° F).

ATIS ★ 127.9 290.9	APP CON 128.675 343.75	NAVY CORPUS TOWER ★ 134.85 340.2	GND CON 118.7 257.85	CLNC DEL 314.3	ASR/PAR
------------------------------	----------------------------------	--	--------------------------------	--------------------------	---------



600	2000	UBOAT	VDP NA when using Corpus Christi (CRP) Intl altimeter setting	4 NM Holding Pattern
VGS1 TCH not coincident (45).		FLOTA 132° → 6000 / ← 312° 2000		



CATEGORY	A	B	C	D
LNAV/VNAV DA	411-1½		393	(400-1½)
LNAV MDA	420-1	402 (500-1)	420-1½	402 (500-1½)
CIRCLING	460-1	480-1	520-1½	580-2
	442 (500-1)	462 (500-1)	502 (600-1½)	562 (600-2)
CORPUS CHRISTI (CRP) INTL ALTIMETER SETTING				
LNAV MDA	460-1	442 (500-1)	460-1½	442 (500-1½)
CIRCLING	500-1	482 (500-1)	540-1½	620-2
			522 (600-1½)	602 (700-2)

ELEV 18	TDZE 18
---------	---------

HIRL Rwy 4-22, 13R-31L
HIRL Rwy 13L-31R, 18-36
REIL Rwy 4-22, 13L-31R, 18-36, 31L

CORPUS CHRISTI, TEXAS
Amdt 2 25JAN24

27°42'N-97°17'W

CORPUS CHRISTI NAS (TRUAX FLD) (KNGP)

RNAV (GPS) RWY 31R

SC-3, 11 JUL 2024 to 08 AUG 2024

SC-3, 11 JUL 2024 to 08 AUG 2024