

# RNAV (GPS) RWY 4

CORPUS CHRISTI NAS (TRUAX FLD) (KNGP)

[USN]

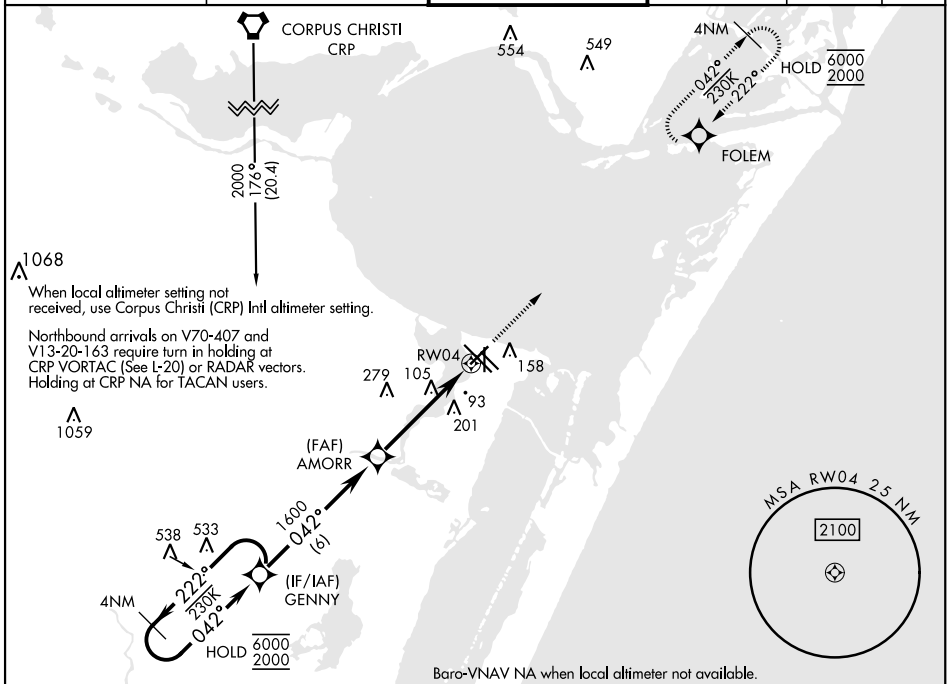
APCH CRS	Rwy ldg	5001
042°	TDZE	17
	Arpt Elev	18

RNP APCH

▼ For uncompensated Baro-VNAV systems, LNAV/VNAV NA below -15°C (5°F) or above 54°C (129°F)

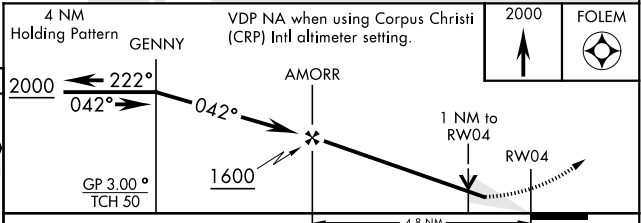
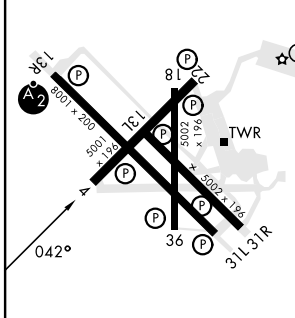
MISSED APPROACH: Climb to 2000 direct FOLEM and hold.

ATIS ★ <b>127.9 290.9</b>	APP CON <b>128.675 343.75</b>	NAVY CORPUS TOWER ★ <b>134.85 340.2</b>	GND CON <b>118.7 257.85</b>	CLNC DEL <b>314.3</b>	ASR/ PAR
------------------------------	----------------------------------	--	--------------------------------	--------------------------	-------------



EMERG SAFE ALT 100 NM 11,100

ELEV 18	TDZE 17
---------	---------



CATEGORY	A	B	C	D
LNAV/VNAV DA	267- <sup>3</sup> / <sub>4</sub>		250 (300- <sup>3</sup> / <sub>4</sub> )	
LNAV MDA	400-1	383 (400-1)	400-1 <sup>1</sup> / <sub>8</sub> 383 (400-1 <sup>1</sup> / <sub>8</sub> )	
<b>C</b> CIRCLING	460-1 442 (500-1)	480-1 462 (500-1)	520-1 <sup>1</sup> / <sub>2</sub> 502 (600-1 <sup>1</sup> / <sub>2</sub> )	580-2 562 (600-2)
CORPUS CHRISTI (CRP) Infil ALTIMETER SETTING				
LNAV MDA	420-1	403 (500-1)	420-1 <sup>1</sup> / <sub>8</sub> 403 (500-1 <sup>1</sup> / <sub>8</sub> )	
<b>C</b> CIRCLING	500-1	482 (500-1)	540-1 <sup>1</sup> / <sub>2</sub> 522 (600-1 <sup>1</sup> / <sub>2</sub> )	620-2 602 (700-2)

CORPUS CHRISTI, TEXAS  
Amdt 2 30NOV23

27°42'N-97°17'W

CORPUS CHRISTI NAS (TRUAX FLD) (KNGP)

# RNAV (GPS) RWY 4

SC-3, 11 JUL 2024 to 08 AUG 2024

SC-3, 11 JUL 2024 to 08 AUG 2024