

TACAN RWY 18

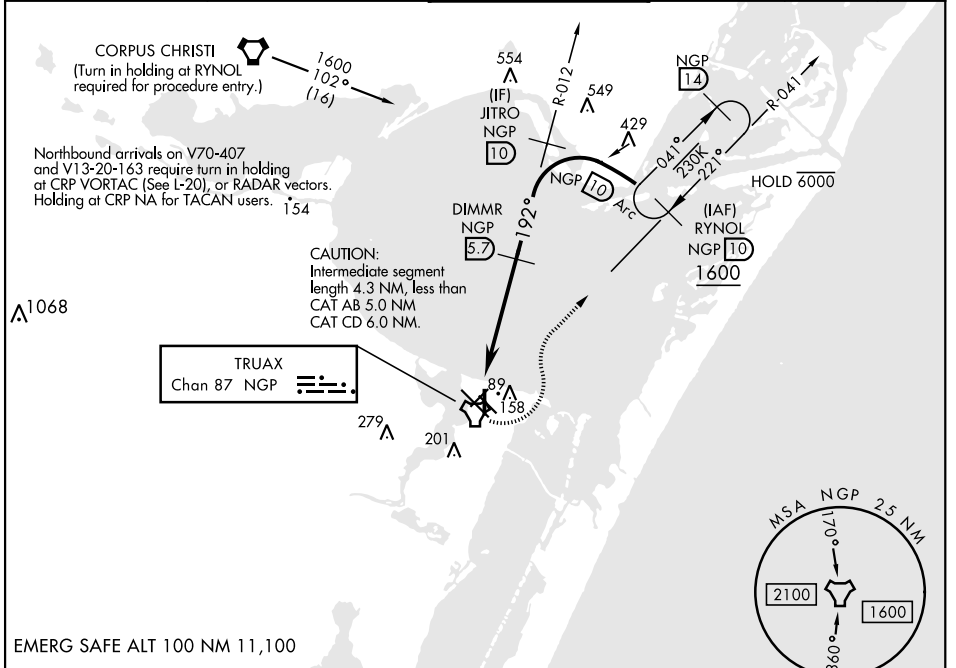
TACAN NGP Chan 87	APCH CRS 192°	Rwy Idg TDZE Arpt Elev 5002 18 18
-----------------------------	-------------------------	-----------------------------------------------------------------------

[USN]

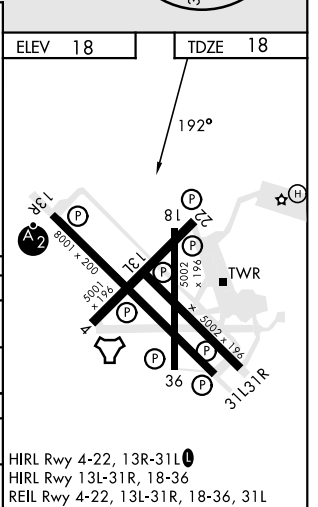
CORPUS CHRISTI NAS (TRUAX FLD) (KNGP)

When local altimeter setting not received, use Corpus Christi (CRP) Intl altimeter setting. MISSED APPROACH: Climb to 1600 direct NGP TACAN and turn left to intercept R-041 to RYNOL and hold.

ATIS ★ 127.9 290.9	APP CON 128.675 343.75	NAVY CORPUS TOWER ★ 134.85 340.2	GND CON 118.7 257.85	CLNC DEL 314.3	ASR/ PAR
------------------------------	----------------------------------	--------------------------------------------	--------------------------------	--------------------------	-------------



1600	NGP	NGP R-041		
CATEGORY	A	B	C	D
S-18		340-1	322	(400-1)
CIRCLING	460-1 442 (500-1)	480-1 462 (500-1)	520-1½ 502 (600-1½)	580-2 562 (600-2)
CORPUS CHRISTI (CRP) INTL ALTIMETER SETTING				
S-18		380-1	362	(400-1)
CIRCLING	500-1	482 (500-1)	540-1½ 522 (600-1½)	620-2 602 (700-2)



TACAN RWY 18

SC-3, 11 JUL 2024 to 08 AUG 2024

SC-3, 11 JUL 2024 to 08 AUG 2024