

CORPUS CHRISTI, TEXAS

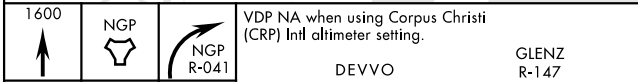
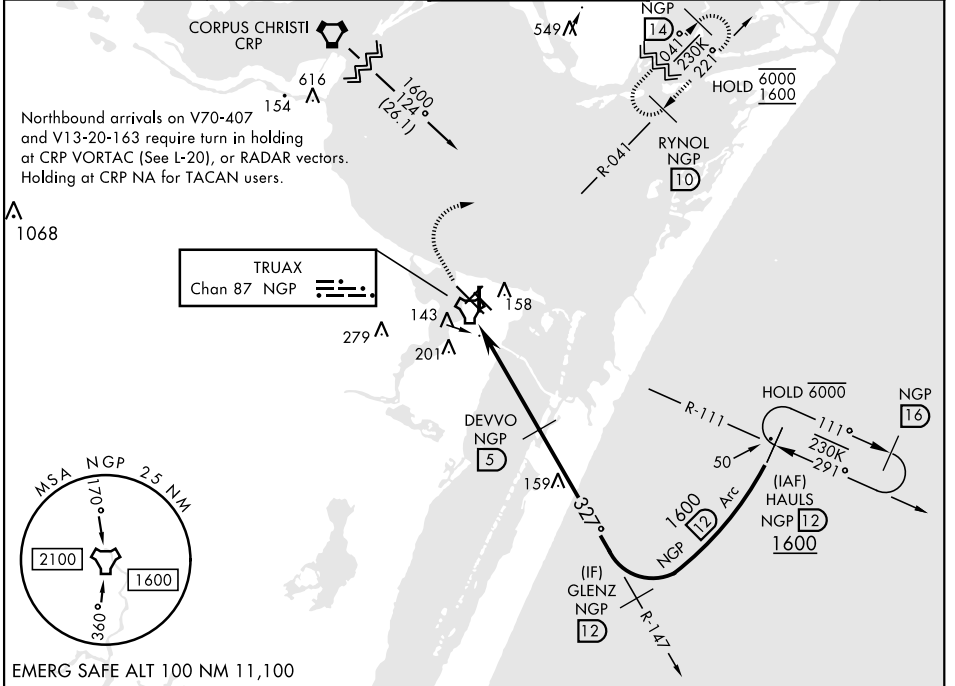
# TACAN RWY 36

TACAN NGP Chan <b>87</b>	APCH CRS <b>327°</b>	Rwy Idg <b>5002</b> TDZE <b>18</b> Arprt Elev <b>18</b>
--------------------------	----------------------	---

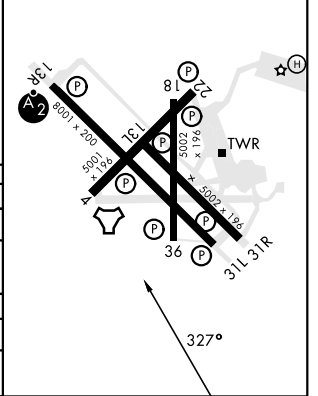
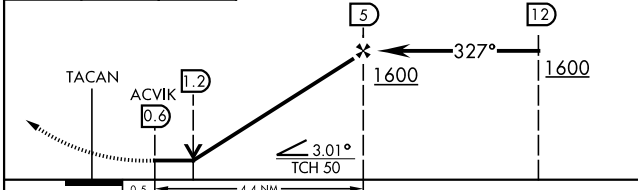
[USN]

CORPUS CHRISTI NAS (TRUAX FLD) (KNGP)

<b>▼</b> When local altimeter setting not received, use Corpus Christi (CRP) Inlt altimeter setting.	MISSED APPROACH: Climb to 1600 direct NGP TACAN and turn right to intercept R-041 to RYNOL and hold.				
ATIS ★ <b>127.9 290.9</b>	APP CON <b>128.675 343.75</b>	NAVY CORPUS TOWER ★ <b>134.85 340.2</b>	GND CON <b>118.7 257.85</b>	CLNC DEL <b>314.3</b>	ASR/PAR



ELEV <b>18</b>	TDZE <b>18</b>
HIRL Rwy 4-22, 13R-31L	
HIRL Rwy 13L-31R, 18-36	
REIL Rwy 4-22, 13L-31R, 18-36, 31L	



CATEGORY	A	B	C	D
S-36	400-1 382 (400-1)	400-1 382 (400-1)	400-1 382 (400-1)	400-1 382 (400-1)
<b>C</b> CIRCLING	460-1 442 (500-1)	480-1 462 (500-1)	520-1 502 (600-1)	580-2 562 (600-2)
CORPUS CHRISTI (CRP) INTL ALTIMETER SETTING				
S-36	440-1 422 (500-1)	440-1 422 (500-1)	440-1 422 (500-1)	440-1 422 (500-1)
<b>C</b> CIRCLING	500-1 482 (500-1)	500-1 482 (500-1)	540-1 522 (600-1)	620-2 602 (700-2)

CORPUS CHRISTI, TEXAS 27° 42' N-97° 17' W CORPUS CHRISTI NAS (TRUAX FLD) (KNGP)

Amdt 2 30NOV23

# TACAN RWY 36

SC-3, 11 JUL 2024 to 08 AUG 2024

SC-3, 11 JUL 2024 to 08 AUG 2024