

TACAN Z RWY 31L

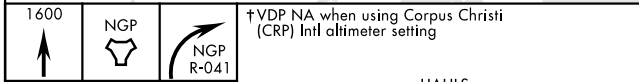
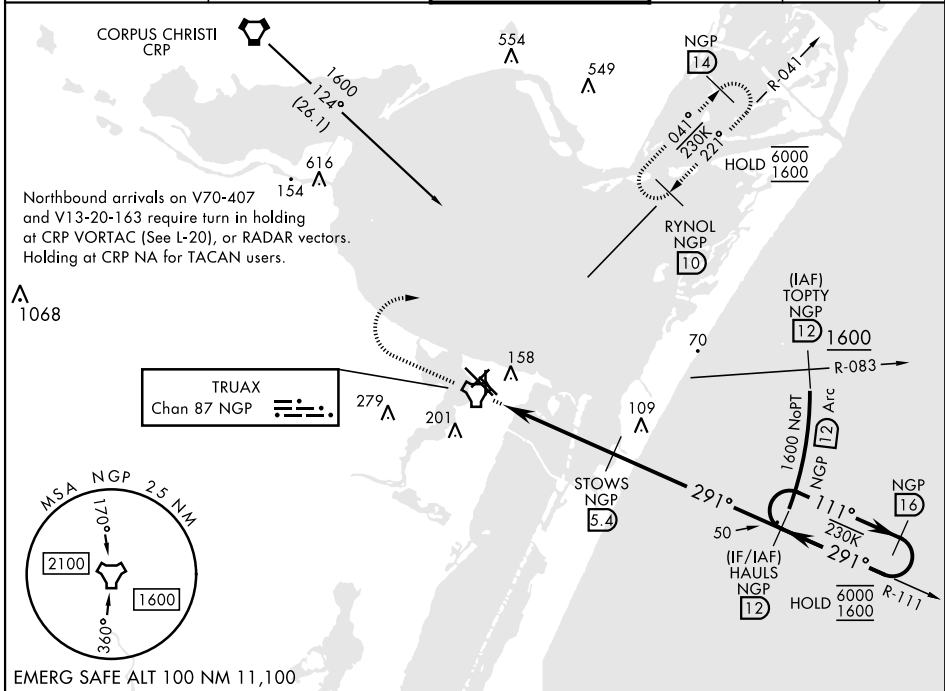
TACAN NGP Chan 87	APCH CRS 291°	Rwy Idg TDZE Arprt Elev 8001 17 18
-----------------------------	-------------------------	--

[USN]

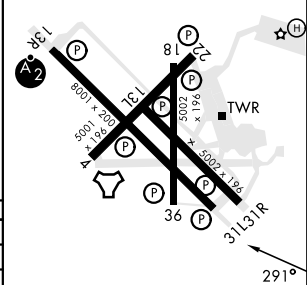
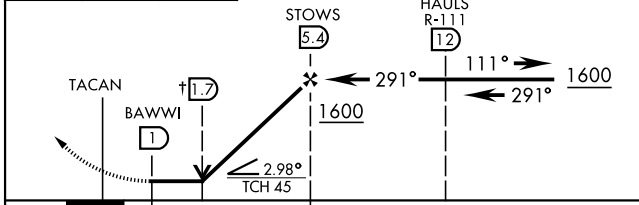
CORPUS CHRISTI NAS (TRUAX FLD) (KNGP)

▼ When local altimeter setting not received, use Corpus Christi (CRP) Intl altimeter setting. MISSED APPROACH: Climb to 1600 direct NGP TACAN and turn right to intercept R-041 to RYNOL and hold.

ATIS ★ 127.9 290.9	APP CON 128.675 343.75	NAVY CORPUS TOWER ★ 134.85 340.2	GND CON 118.7 257.85	CLNC DEL 314.3	ASR/ PAR
------------------------------	----------------------------------	--	--------------------------------	--------------------------	-------------



ELEV 18	TDZE 17
---------	---------



CATEGORY	A		B		C		D	
S-31L	420-1	403 (500-1)	420-1 $\frac{1}{8}$	403 (500-1 $\frac{1}{8}$)				
CIRCLING	460-1	480-1	520-1 $\frac{1}{2}$	580-2				
	442 (500-1)	462 (500-1)	502 (600-1 $\frac{1}{2}$)	562 (600-2)				
CORPUS CHRISTI (CRP) INTL ALTIMETER SETTING								
S-31L	460-1	443 (500-1)	460-1 $\frac{3}{8}$	443 (500-1 $\frac{3}{8}$)				
CIRCLING	500-1	482 (500-1)	540-1 $\frac{1}{2}$	620-2				
			522 (600-1 $\frac{1}{2}$)	602 (700-2)				

HIRL Rwy 4-22, 13R-31L

HIRL Rwy 13L-31R, 18-36

REIL Rwy 4-22, 13L-31R, 18-36, 31L

TACAN Z RWY 31L

SC-3, 11 JUL 2024 to 08 AUG 2024

SC-3, 11 JUL 2024 to 08 AUG 2024