

CORPUS CHRISTI, TEXAS

VOR/DME or TACAN Y RWY 13R

[USN]

CORPUS CHRISTI NAS (TRUAX FLD) (KNGP)

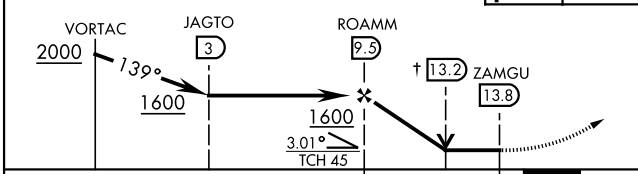
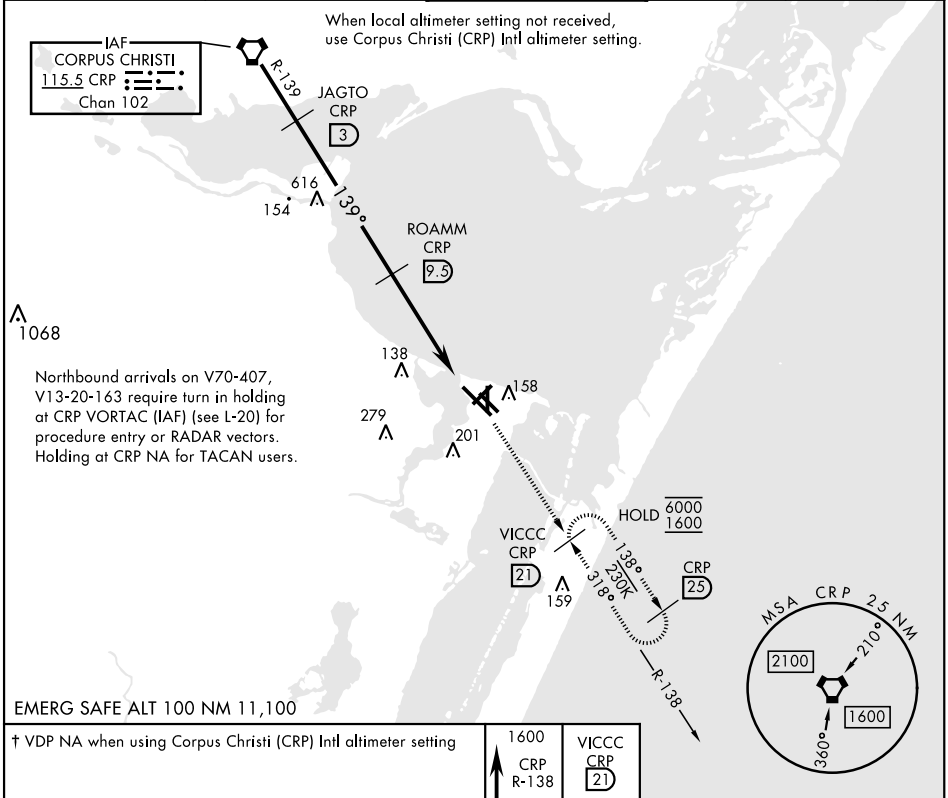
VORTAC CRP 115.5 Chan 102	APCH CRS 139°	Rwy Idg 8001 TDZE 13 Arprt Elev 18
---	-------------------------	---



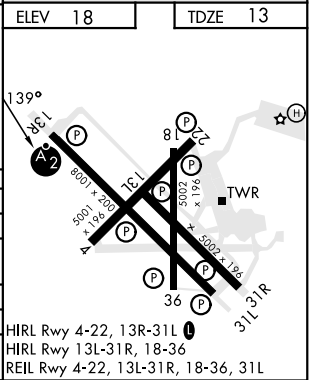
MISSED APPROACH: Climb to 1600 on CRP VORTAC R-138 to VICCC and hold.

▼ * When ALS inop, increase CAT AB vis to 1 mile, CAT CD vis to 1½ miles.
** When ALS inop, increase CAT AB vis to 1 mile, CAT CD vis to 1¾ miles.

ATIS * 127.9 290.9	APP CON 128.675 343.75	NAVY CORPUS TOWER * 134.85 340.2	GND CON 118.7 257.85	CLNC DEL 314.3	ASR/PAR
------------------------------	----------------------------------	--	--------------------------------	--------------------------	---------



CATEGORY	A	B	C	D
S-13R *	420-¾ 407	(500-¾)	420-1 407	(500-1)
CIRCLING	460-1	480-1	520-1½	580-2
	442 (500-1)	462 (500-1)	502 (600-1½)	562 (600-2)
CORPUS CHRISTI (CRP) INTL ALTIMETER SETTING				
S-13R **	460-¾ 447	(500-1¾)	460-1 447	(500-1)
CIRCLING	500-1	482 (500-1)	540-1½	620-2
	500-1	482 (500-1)	522 (600-1½)	602 (700-2)



CORPUS CHRISTI, TEXAS
Amdt 2 30NOV23

27°42'N-97°17'W

CORPUS CHRISTI NAS (TRUAX FLD) (KNGP)

VOR/DME or TACAN Y RWY 13R

SC-3, 11 JUL 2024 to 08 AUG 2024

SC-3, 11 JUL 2024 to 08 AUG 2024