

CORPUS CHRISTI, TEXAS

VOR/DME or TACAN Y RWY 31L

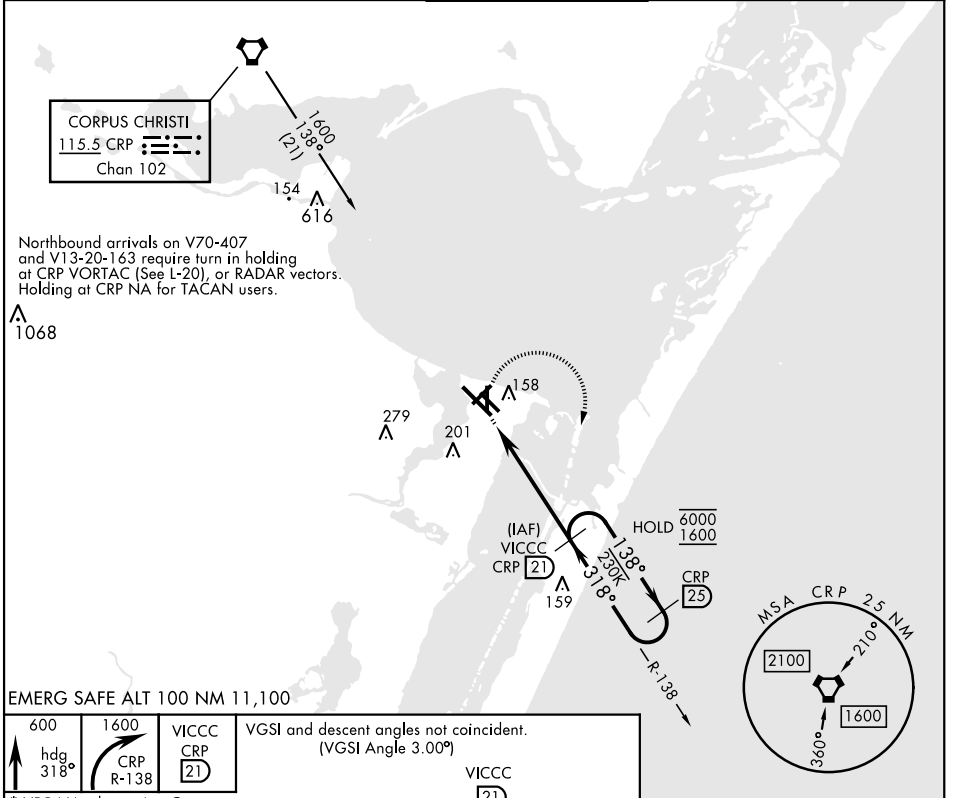
VORTAC CRP 115.5 Chan 102	APCH CRS 318°	Rwy Ldg TDZE 17 Arprt Elev 18
---	-------------------------	---

[USN]

CORPUS CHRISTI NAS (TRUAX FLD) (KNGP)

When local altimeter setting not received, use Corpus Christi (CRP) Intl altimeter setting. MISSED APPROACH: Climb to 600 hdg 318°, then climbing right turn to 1600 to intercept CRP VORTAC R-138 to VICCC and hold.

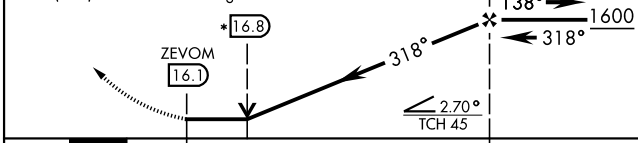
ATIS ★ 127.9 290.9	APP CON 128.675 343.75	NAVY CORPUS TOWER ★ 134.85 340.2	GND CON 118.7 257.85	CLNC DEL 314.3	ASR/ PAR
------------------------------	----------------------------------	--	--------------------------------	--------------------------	-------------



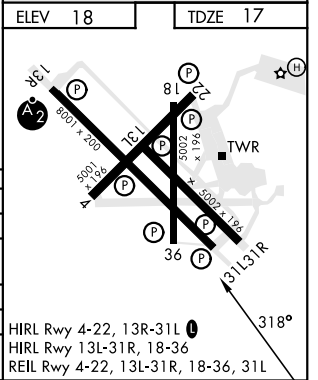
EMERG SAFE ALT 100 NM 11,100

600 hdg 318°	1600 CRP R-138	VICCC CRP 21	VGSI and descent angles not coincident. (VGSI Angle 3.00°)
--------------	----------------	--------------	--

* VDP NA when using Corpus Christi (CRP) Intl altimeter setting.



CATEGORY	A	B	C	D
S-31L	420-1 403 (500-1)	420-1½ 403 (500-1½)	420-1½ 403 (500-1½)	420-1½ 403 (500-1½)
CIRCLING	440-1 423 (500-1)	440-1½ 423 (500-1½)	440-1½ 423 (500-1½)	440-1½ 423 (500-1½)
CORPUS CHRISTI (CRP) INTL ALTIMETER SETTING				
S-31L	440-1 423 (500-1)	440-1½ 423 (500-1½)	440-1½ 423 (500-1½)	440-1½ 423 (500-1½)
CIRCLING	460-1 482 (500-1)	460-1½ 482 (500-1½)	460-1½ 482 (500-1½)	460-1½ 482 (500-1½)



CORPUS CHRISTI, TEXAS
Amdt 2 30NOV23

27° 42' N-97° 17' W CORPUS CHRISTI NAS (TRUAX FLD) (KNGP)

VOR/DME or TACAN Y RWY 31L

SC-3, 11 JUL 2024 to 08 AUG 2024

SC-3, 11 JUL 2024 to 08 AUG 2024